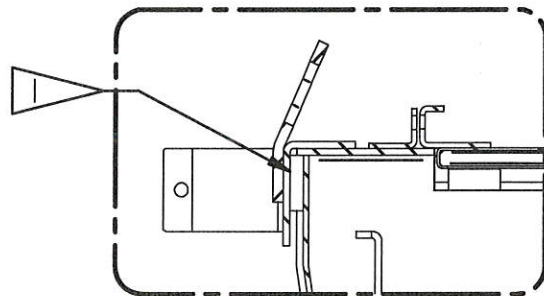


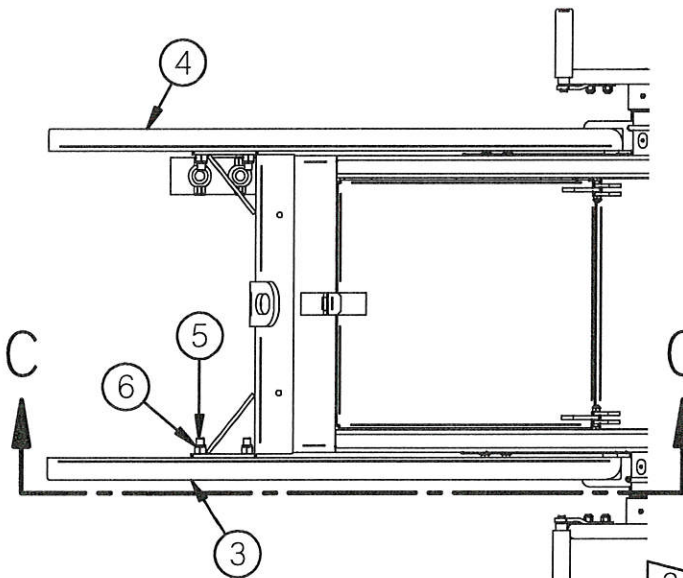
SECTION A-A

CENTER MFA0698004 AND SLIDE IT TIGHT UNDER THE LIP OF FNG8144 FRAME AS SHOWN IN DETAIL B

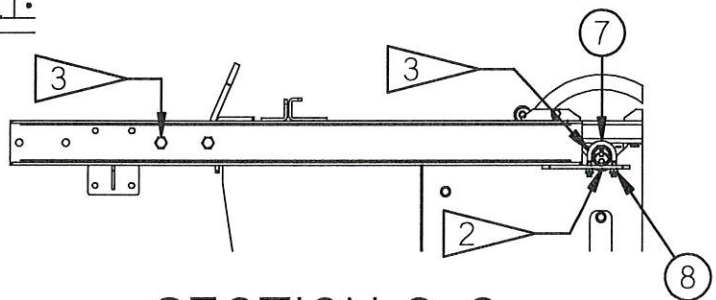


DETAIL B

SLIDE MFA0698005 AND MFA0698005 SIDE CHANNELS UNDER THE WHEEL SHAFT ON EITHER SIDE OF THE FRAME



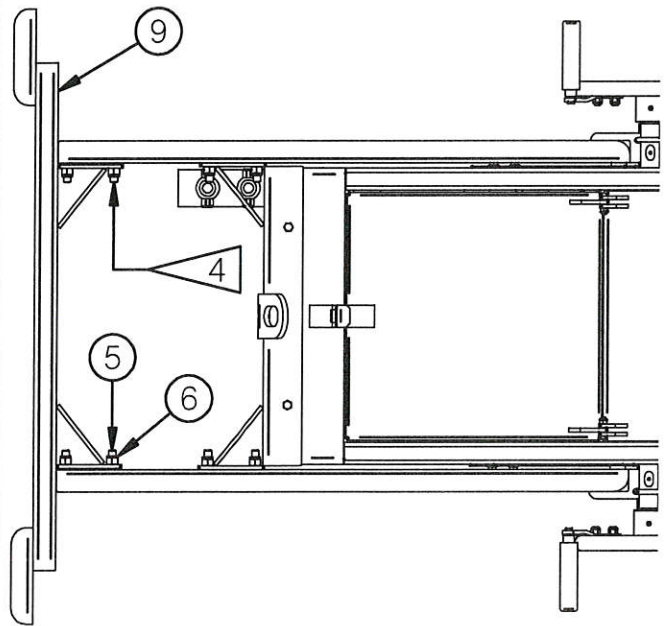
ASSEMBLE 2562 BLT AND 23905 BLT BOLTS FINGER TIGHT



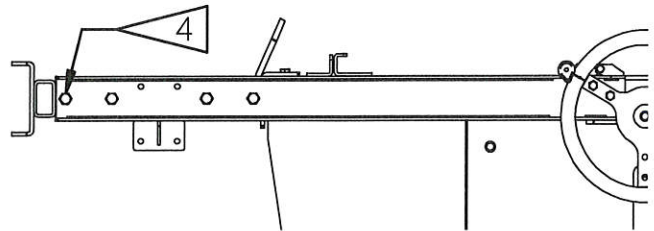
SECTION C-C

969630Q MIS ASSEMBLY

210-3 SRA QMP VACUUM SYSTEM ASSEMBLY - PAGE 02

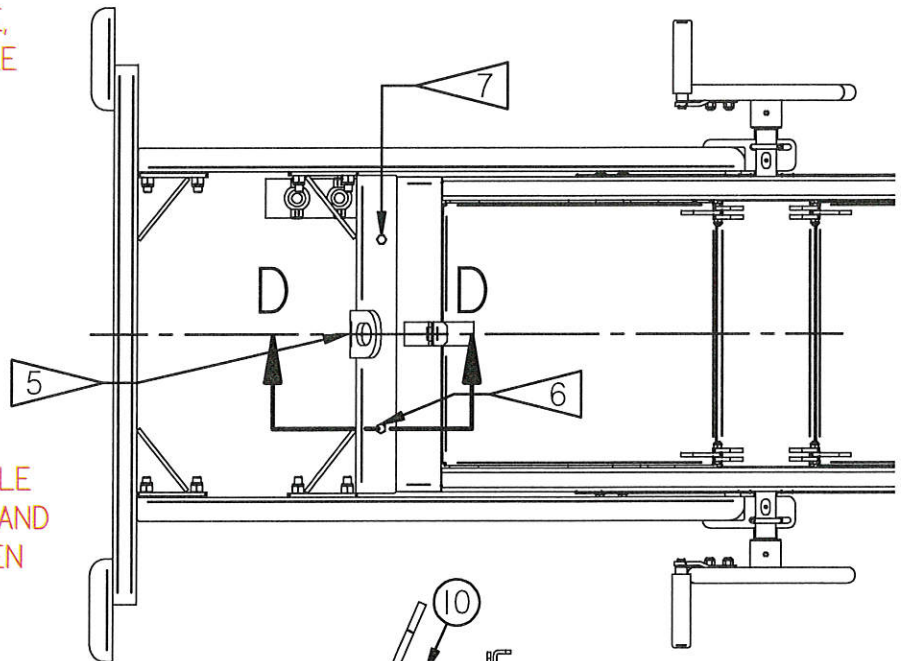


4 CENTER MFA0698007 AND BOLT TO THE SIDE CHANNELS HAND TIGHT



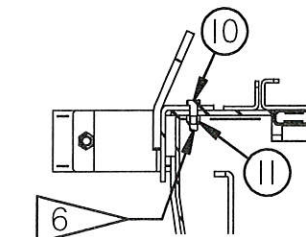
5 ENSURE THAT THE SIDE CHANNELS AND THE LIFTING BALE BRACKET CENTERED AND THE LIFTING BALE BRACKET SHOULD BE PUSHED TIGHT AGAINST THE DRILL FRAME

6 WITH ALL PARTS SECURE, DRILL A SINGLE 3/8" HOLE THROUGH THE LIFTING BRACKET AND FRAME. AFTER THAT BOLT THE BRACKET SNUG



7 DRILL A SECOND 3/8" HOLE THROUGH THE BRACKET AND FRAME. BOLT AND TIGHTEN BOTH SIDES IN PLACE

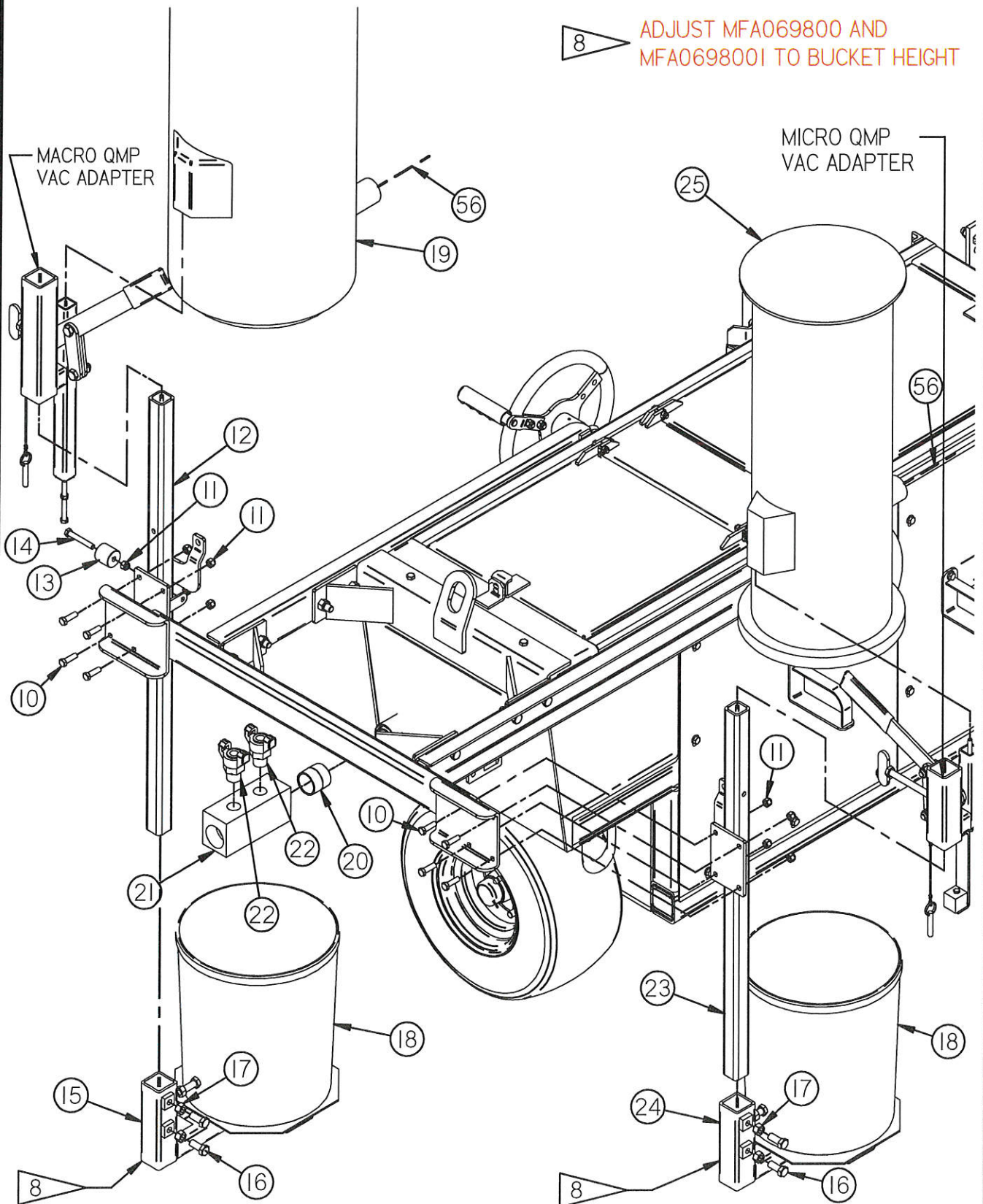
8 TIGHTEN ALL BOLTS THAT WERE PREVIOUSLY FINGER TIGHT



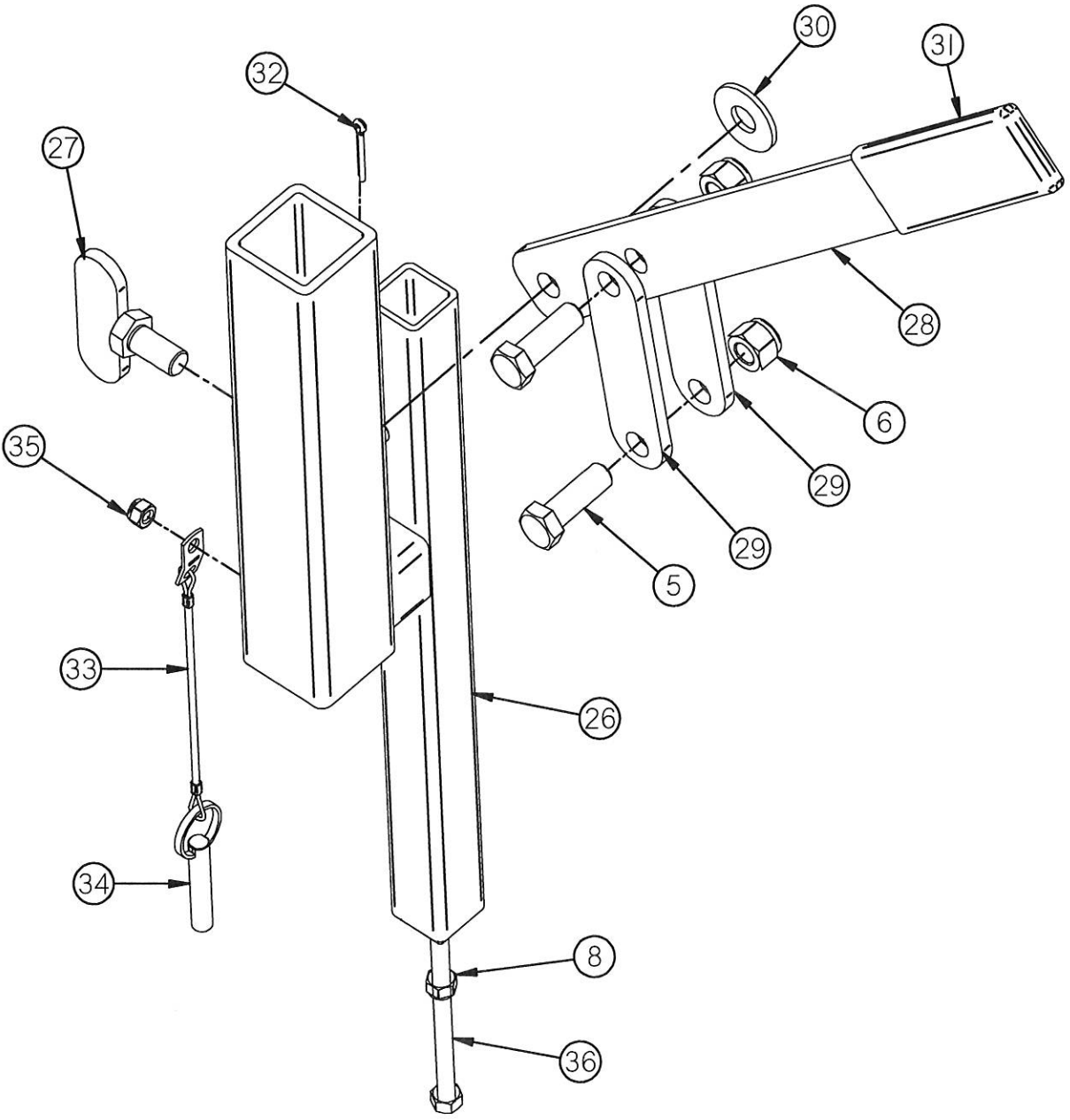
SECTION D-D

210-3 SRA QMP VACUUM SYSTEM ASSEMBLY - PAGE 03

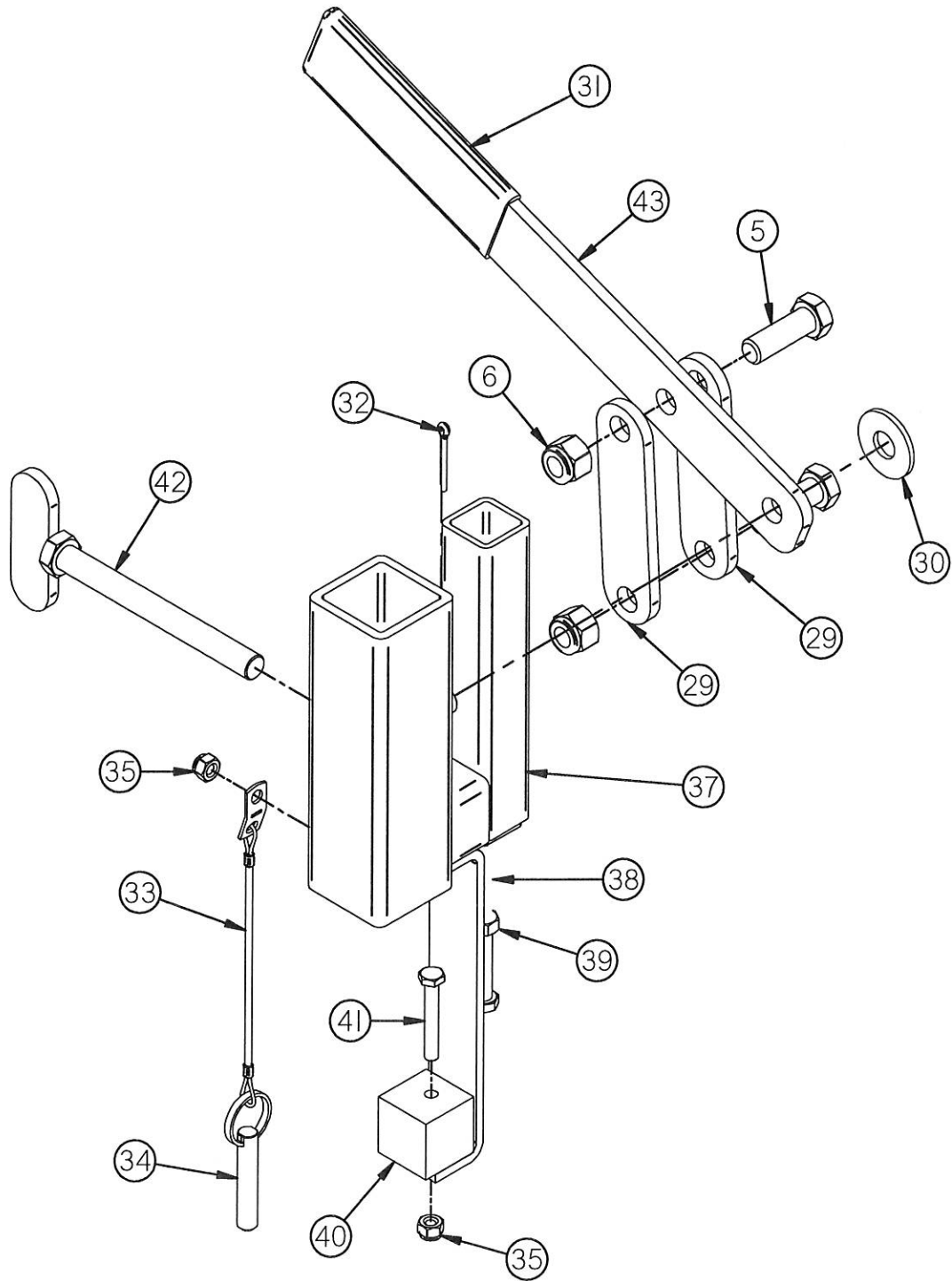
8 ADJUST MFA069800 AND MFA069800I TO BUCKET HEIGHT



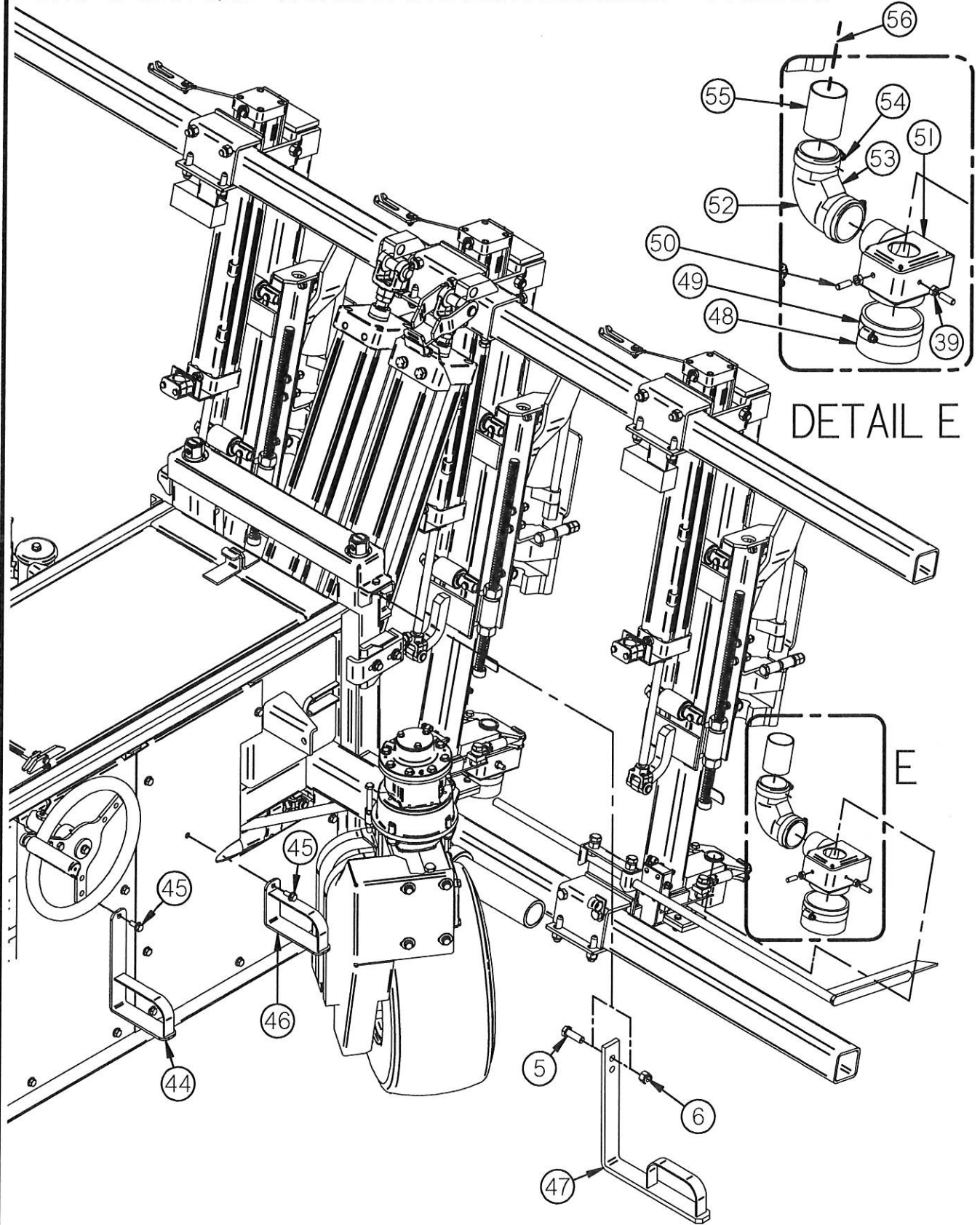
MACRO QMP VAC ADAPTER



MICRO QMP VAC ADAPTER



210-3 SRA QMP VACUUM SYSTEM ASSEMBLY - PAGE 06



DETAIL E

E

210-3 SRA QMP VACUUM SYSTEM ASSEMBLY - PAGE 07

Item No.	Part No.	Quantity	Description
1	FNG8144	1	210-3, -4, -5 SRA (MULTI-GANG)
2	MFA0698004	1	LIFTING BALE BRACKET
3	MFA0698005	1	LEFT SIDE CHANNEL
4	MFA0698006	1	RIGHT SIDE CHANNEL
5	2562 BLT	14	1/2" NC X 1.50" HX HD TAP BOLT
6	2734NUT	14	1/2" NC NYLON INSERT LOCKNUT
7	23905 BLT	2	5/16-18 X 1" U-BOLT
8	2719 NUT	5	5/16" NC NYLON INSERT LOCKNUT
9	MFA0698007	1	VACUUM POST MOUNT
10	2540 BLT	10	3/8" NC X 1.25" HX HD BOLT
11	2727NUT	11	3/8" NC NYLON INSERT LOCKNUT
12	MFA0698002	1	LARGE MOUNT POST
13	MFA0698009	1	NYLON ROLLER
14	2546 BLT	1	3/8" NC X 2.50" HX HD BOLT
15	MFA069800	1	LARGE BUCKET TRAY
16	2560BLT	6	1/2" NC X 1.25" HX HD BOLT
17	2732 NUT	6	1/2" NC STANDARD NUT
18	43058 MIS	2	5 GAL. PLASTIC PALE, BLACK
19	96951Q MIS	1	MACRO QMP VACUUM
20	27271 PFT	1	1-1/2" NPT CLOSE HEAVY NIPPLE
21	MFA06987	1	MANIFOLD FOR MULTI VACUUM
22	2006FIT	2	3/4" MALE PIPE TO QUICK COUPLER
23	MFA0698003	1	SMALL MOUNT POST
24	MFA0698001	1	SMALL BUCKET TRAY
25	9695Q MIS	1	MICRO QMP VACUUM
26	MFA069933Q	1	QMP VAC ADAPTER - (MOD 210B-2 SRA)
27	MFA069903	1	SET SCREW - DUST COLLECTION
28	MFA0699040	1	RAISE/LOWER LEVER - MACRO DUST COLLECTION
29	MFA069906	4	FRAME CLAMP LONG

210-3 SRA QMP VACUUM SYSTEM ASSEMBLY - PAGE 08

Item No.	Part No.	Quantity	Description
30	2830 WAS	2	1/2" STD. FLAT WASHER
31	18206GR0	2	LEVER GRIP
32	3022I PIN	2	1/8" X 1-1/4" COTTER PIN
33	303IPIN	2	LANYARD W/TAB ONE END
34	3029PIN	2	LOCK PIN
35	2716NUT	3	1/4" NC NYLON LOCK NUT
36	MFA0699700Q	1	QMP 2-PORT COLLECTOR MOUNTING BOLT
37	MFA069902Q	1	ADAPTER - LIFTING BALE - DUST COLLECTION
38	2536 BLT	1	5/16" NC X 8.00" HX HD BOLT
39	2717 NUT	7	5/16 UNC HEX NUT (ZP, GR. 5)
40	MFA069902Q_02	1	BOLT ON BLOCK
41	25072 BLT	1	1/4" NC X 1.75" HX HD BOLT
42	MFA0698008	1	5" BOLT SET SCREW
43	MFA069904_01	1	RAISE/LOWER LEVER - DUST COLLECTION
44	MFA06984Q	2	MULTIGANG QMP HOSE HOLDER
45	25175 BLT	4	5/16 NC X .75" LG. HEX FLG HEAD BOLT
46	MFA06984	2	MULTIGANG HOSE HOLDER
47	MFA06983	2	MULTIGANG HOSE HOLDER
48	190406 HOS	3	3" COLLECTOR HOSE (2" LONG PIECE)
49	19503 CLP	3	WORM GEAR HOSE CLAMP (3 - 4")
50	2521 BLT	6	5/16-18 X 1" SET SCREW
51	MFA069913	3	DUST COLLECTOR HEAD
52	19045 HOS	3	2" 90 DEG. SILICONE HOSE COUPLER
53	MFA069914	3	90 DEG. ELBOW CLAMP
54	195025 CLP	6	WORM GEAR HOSE CLAMP (1-1/2" - 2-1/2")
55	MFA069910_L12	3	DUST HEAD ROUND TUBE
56*	19255 HOS	36 FEET	2" VACUUM HOSE