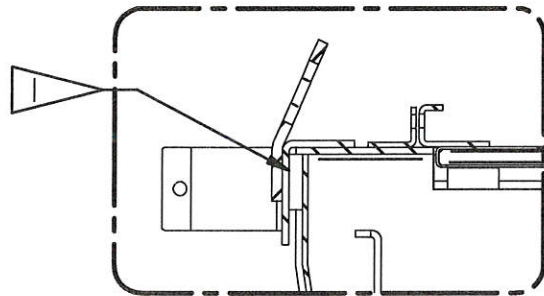


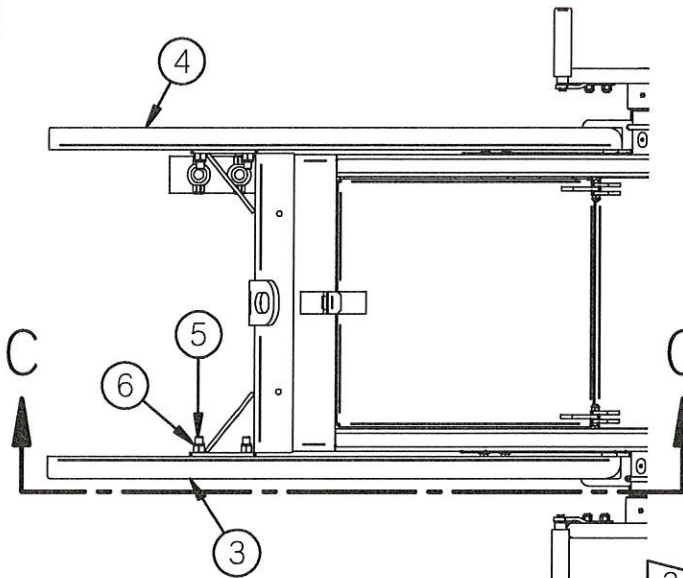
SECTION A-A

CENTER MFA0698004 AND SLIDE IT TIGHT UNDER THE LIP OF FNG8144 FRAME AS SHOWN IN DETAIL B

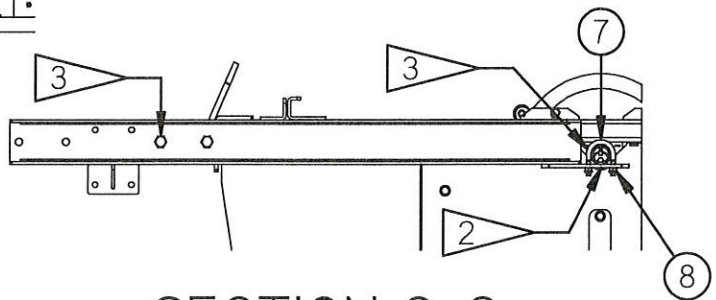


DETAIL B

SLIDE MFA0698005 AND MFA0698005 SIDE CHANNELS UNDER THE WHEEL SHAFT ON EITHER SIDE OF THE FRAME



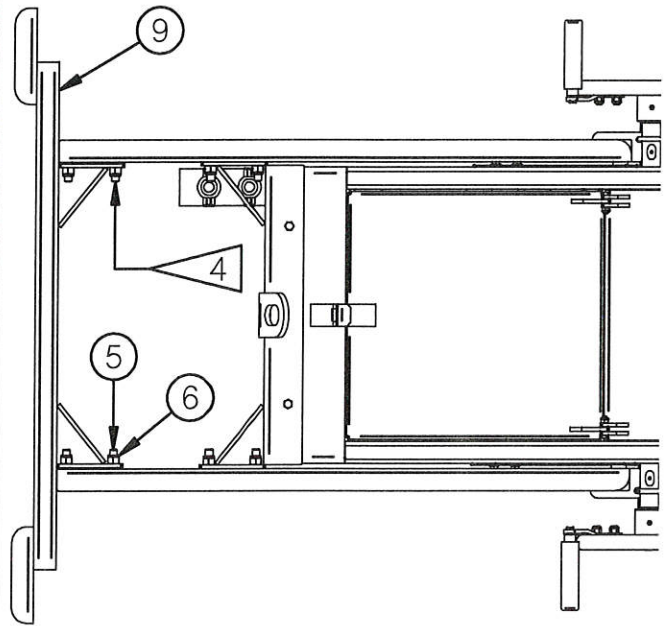
ASSEMBLE 2562 BLT AND 23905 BLT BOLTS FINGER TIGHT



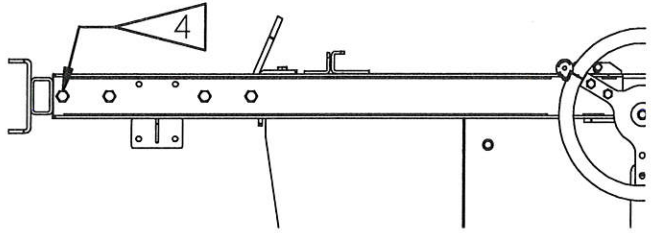
SECTION C-C

96964Q MIS ASSEMBLY

210-4 SRA QMP VACUUM SYSTEM ASSEMBLY - PAGE 02

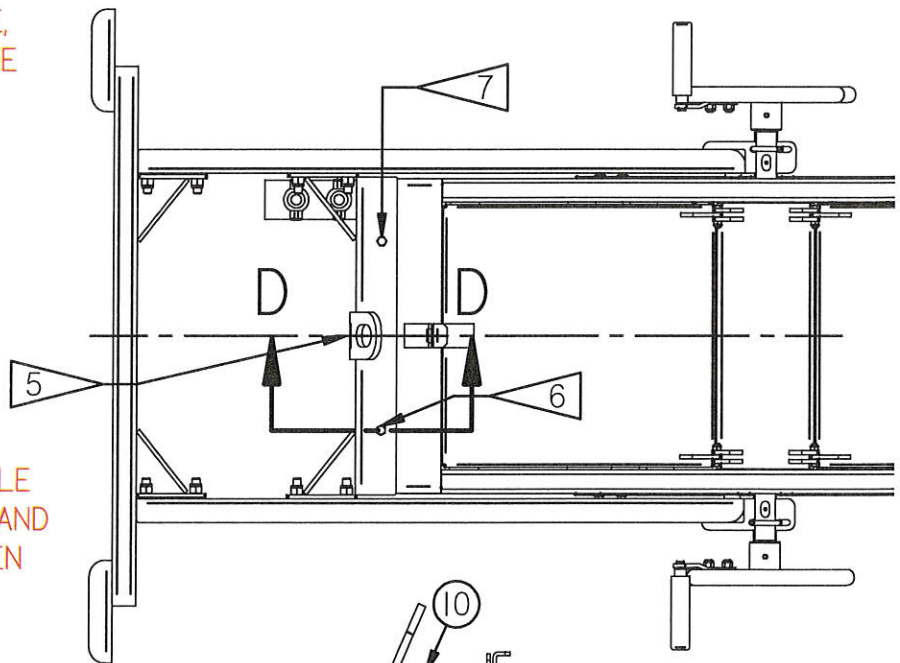


4 CENTER MFA0698007 AND BOLT TO THE SIDE CHANNELS HAND TIGHT



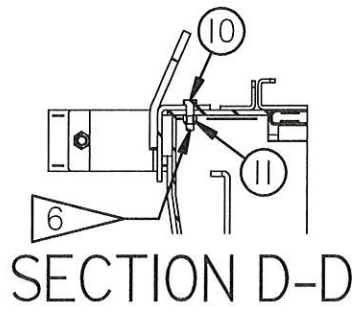
5 ENSURE THAT THE SIDE CHANNELS AND THE LIFTING BALE BRACKET CENTERED AND THE LIFTING BALE BRACKET SHOULD BE PUSHED TIGHT AGAINST THE DRILL FRAME

6 WITH ALL PARTS SECURE, DRILL A SINGLE 3/8" HOLE THROUGH THE LIFTING BRACKET AND FRAME. AFTER THAT BOLT THE BRACKET SNUG



7 DRILL A SECOND 3/8" HOLE THROUGH THE BRACKET AND FRAME. BOLT AND TIGHTEN BOTH SIDES IN PLACE

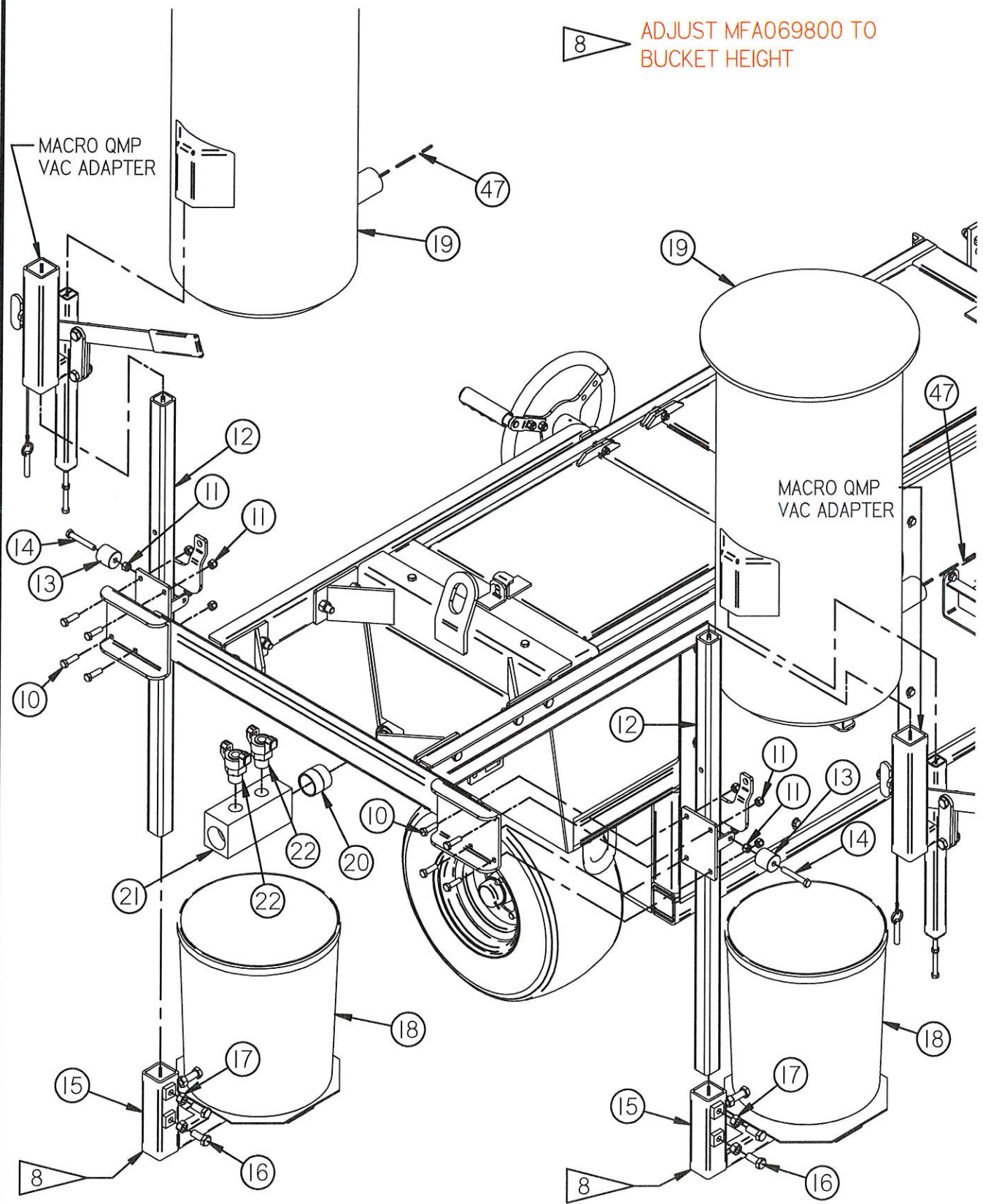
8 TIGHTEN ALL BOLTS THAT WERE PREVIOUSLY FINGER TIGHT



SECTION D-D

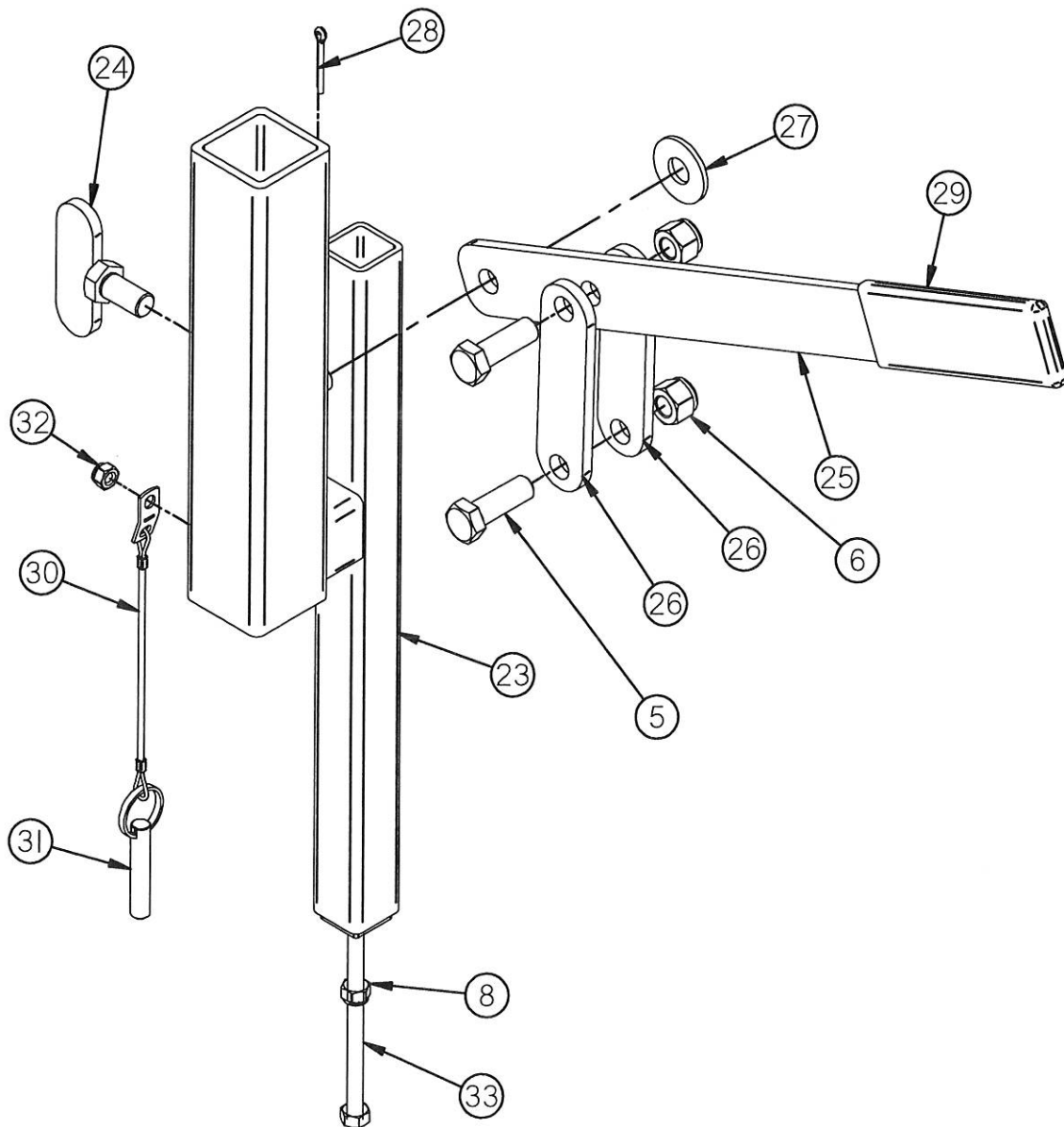
210-4 SRA QMP VACUUM SYSTEM ASSEMBLY - PAGE 03

8 ADJUST MFA069800 TO
BUCKET HEIGHT

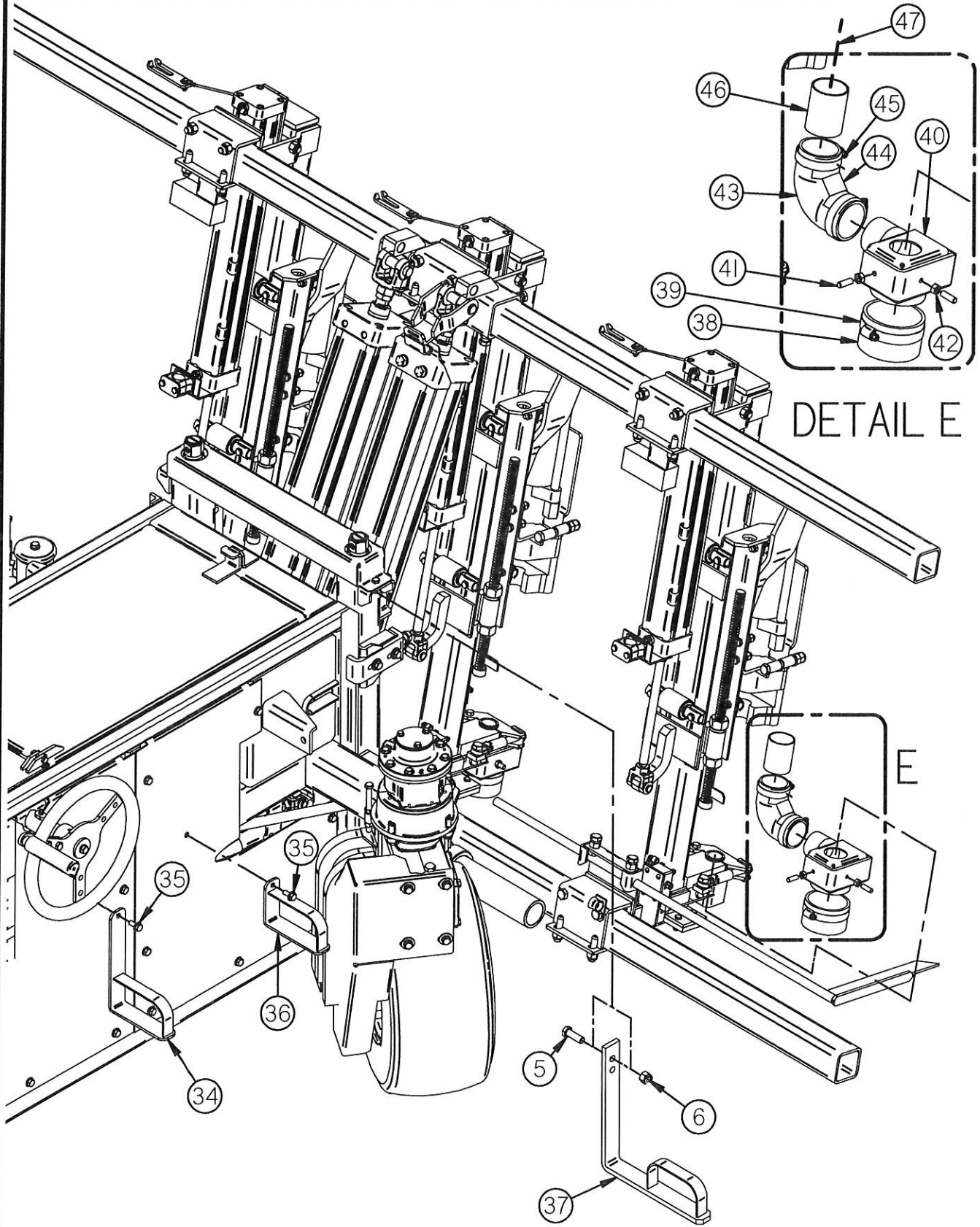


96964Q MIS ASSEMBLY

MACRO QMP VAC ADAPTER



210-4 SRA QMP VACUUM SYSTEM ASSEMBLY - PAGE 05



DETAIL E

E

210-4 SRA QMP VACUUM SYSTEM ASSEMBLY - PAGE 06

Item No.	Part No.	Quantity	Description
1	FNG8144	1	210-3, -4, -5 SRA (MULTI-GANG)
2	MFA0698004	1	LIFTING BALE BRACKET
3	MFA0698005	1	LEFT SIDE CHANNEL
4	MFA0698006	1	RIGHT SIDE CHANNEL
5	2562 BLT	14	1/2" NC X 1.50" HX HD TAP BOLT
6	2734NUT	14	1/2" NC NYLON INSERT LOCKNUT
7	23905 BLT	2	5/16-18 X 1" U-BOLT
8	2719 NUT	6	5/16" NC NYLON INSERT LOCKNUT
9	MFA0698007	1	VACUUM POST MOUNT
10	2540 BLT	10	3/8" NC X 1.25" HX HD BOLT
11	2727NUT	12	3/8" NC NYLON INSERT LOCKNUT
12	MFA0698002	2	LARGE MOUNT POST
13	MFA0698009	2	NYLON ROLLER
14	2546 BLT	2	3/8" NC X 2.50" HX HD BOLT
15	MFA069800	2	LARGE BUCKET TRAY
16	2560BLT	6	1/2" NC X 1.25" HX HD BOLT
17	2732 NUT	6	1/2" NC STANDARD NUT
18	43058 MIS	2	5 GAL. PLASTIC PALE, BLACK
19	96951Q MIS	2	MACRO QMP VACUUM
20	27271 PFT	1	1-1/2" NPT CLOSE HEAVY NIPPLE
21	MFA06987	1	MANIFOLD FOR MULTI VACUUM
22	2006FIT	2	3/4" MALE PIPE TO QUICK COUPLER
23	MFA069933Q	2	QMP VAC ADAPTER - (MOD 210B-2 SRA)
24	MFA069903	2	SET SCREW - DUST COLLECTION
25	MFA0699040	2	RAISE/LOWER LEVER - MACRO DUST COLLECTION
26	MFA069906	4	FRAME CLAMP LONG
27	2830 WAS	2	1/2" STD. FLAT WASHER
28	3022I PIN	2	1/8" X 1-1/4" COTTER PIN

210-4 SRA QMP VACUUM SYSTEM ASSEMBLY - PAGE 07

Item No.	Part No.	Quantity	Description
29	I8206GR0	2	LEVER GRIP
30	303IPIN	2	LANYARD W/TAB ONE END
31	3029PIN	2	LOCK PIN
32	27I6NUT	2	1/4" NC NYLON LOCK NUT
33	MFA0699700Q	2	QMP 2-PORT COLLECTOR MOUNTING BOLT
34	MFA06984Q	2	MULTIGANG QMP HOSE HOLDER
35	25I75 BLT	4	5/16 NC X .75" LG. HEX FLG HEAD BOLT
36	MFA06984	2	MULTIGANG HOSE HOLDER
37	MFA06983	2	MULTIGANG HOSE HOLDER
38	I90406 HOS	4	3" COLLECTOR HOSE (2" LONG PIECE)
39	I9503 CLP	4	WORM GEAR HOSE CLAMP (3 - 4")
40	MFA0699I3	4	DUST COLLECTOR HEAD
41	252I BLT	8	5/16-18 X I" SET SCREW
42	27I7 NUT	8	5/16 UNC HEX NUT (ZP, GR. 5)
43	I9045 HOS	4	2" 90 DEG. SILICONE HOSE COUPLER
44	MFA0699I4	4	90 DEG. ELBOW CLAMP
45	I95025 CLP	8	WORM GEAR HOSE CLAMP (I-1/2" - 2-1/2")
46	MFA0699I0_I2	4	DUST HEAD ROUND TUBE
47*	I9255 HOS	50 FEET	2" VACUUM HOSE