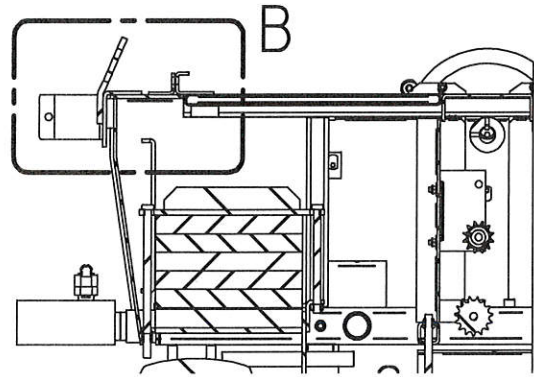
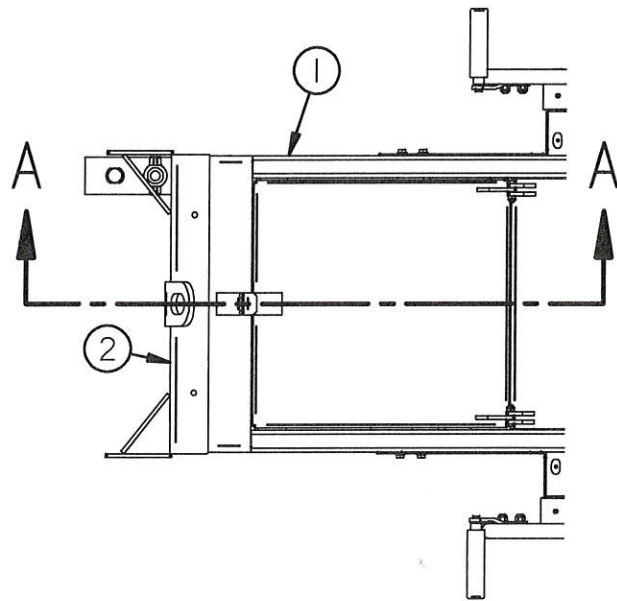
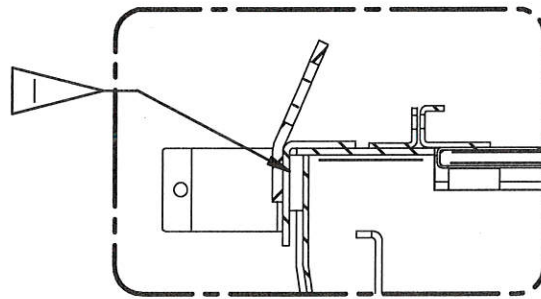


210-5 SRA QMP VACUUM SYSTEM ASSEMBLY - PAGE 01

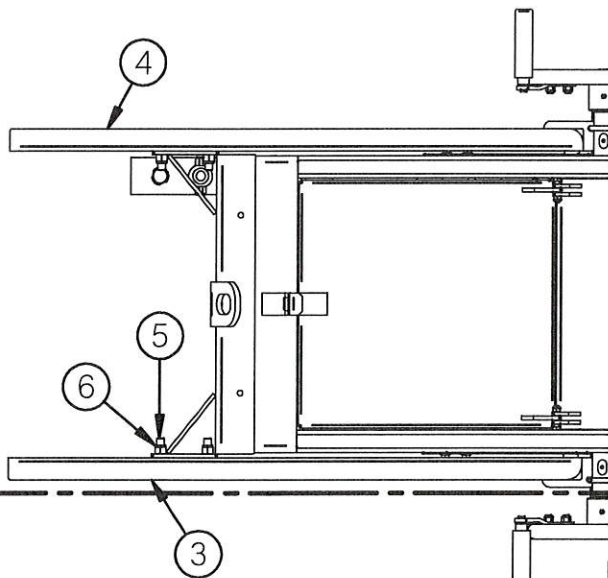


SECTION A-A



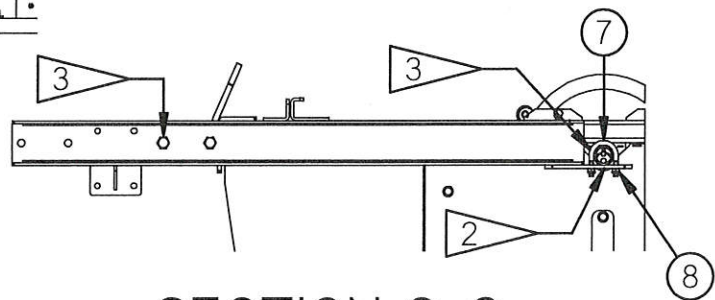
DETAIL B

CENTER MFA0698004 AND SLIDE IT TIGHT UNDER THE LIP OF FNG8144 FRAME AS SHOWN IN DETAIL B



SLIDE MFA0698005 AND MFA0698005 SIDE CHANNELS UNDER THE WHEEL SHAFT ON EITHER SIDE OF THE FRAME

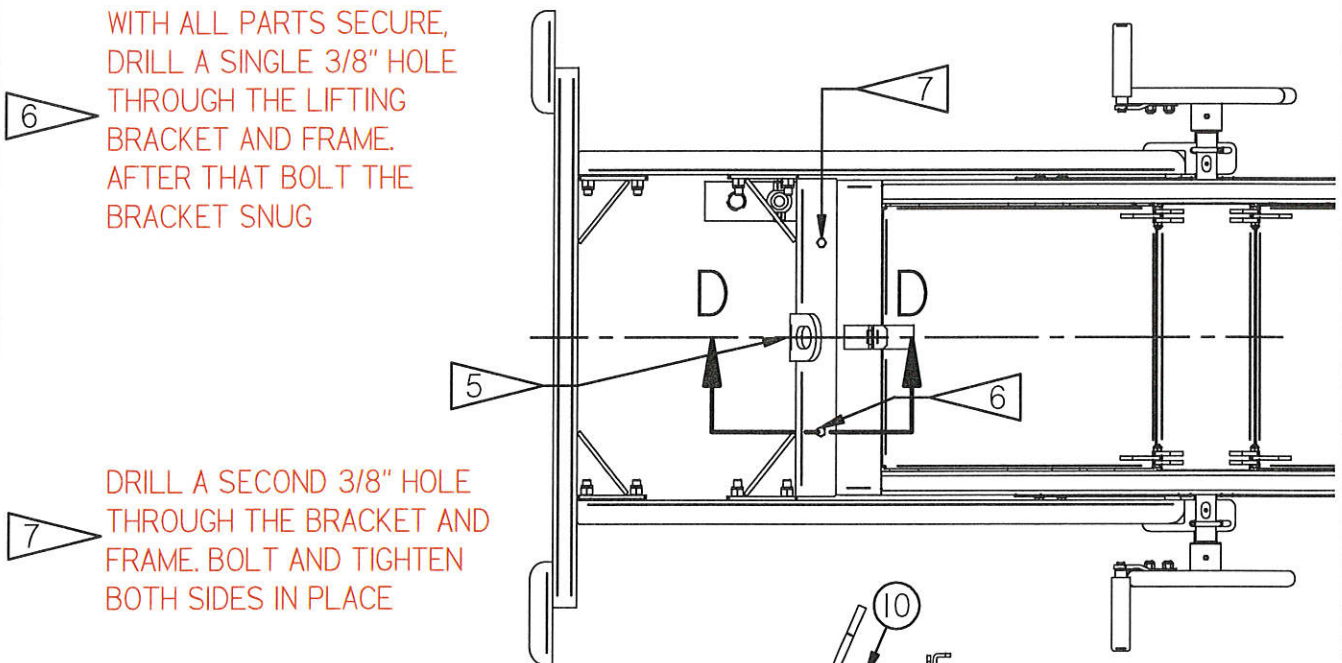
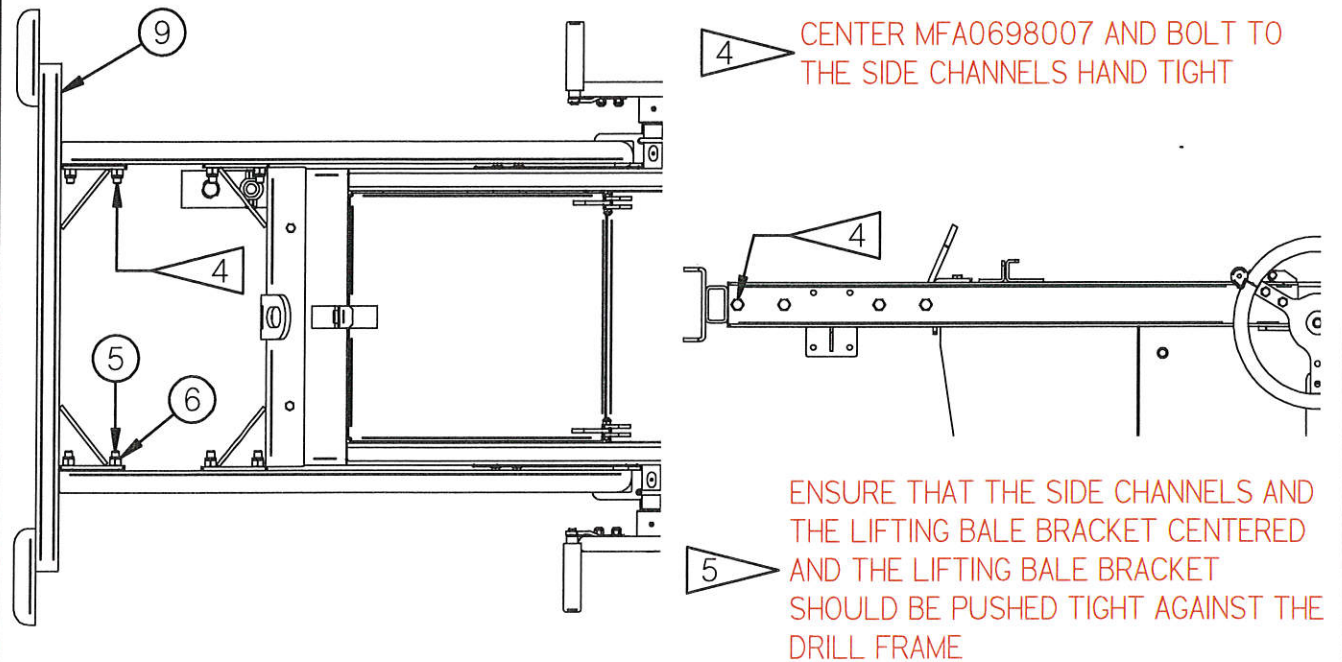
ASSEMBLE 2562 BLT AND 23905 BLT BOLTS FINGER TIGHT



SECTION C-C

96965Q MIS ASSEMBLY

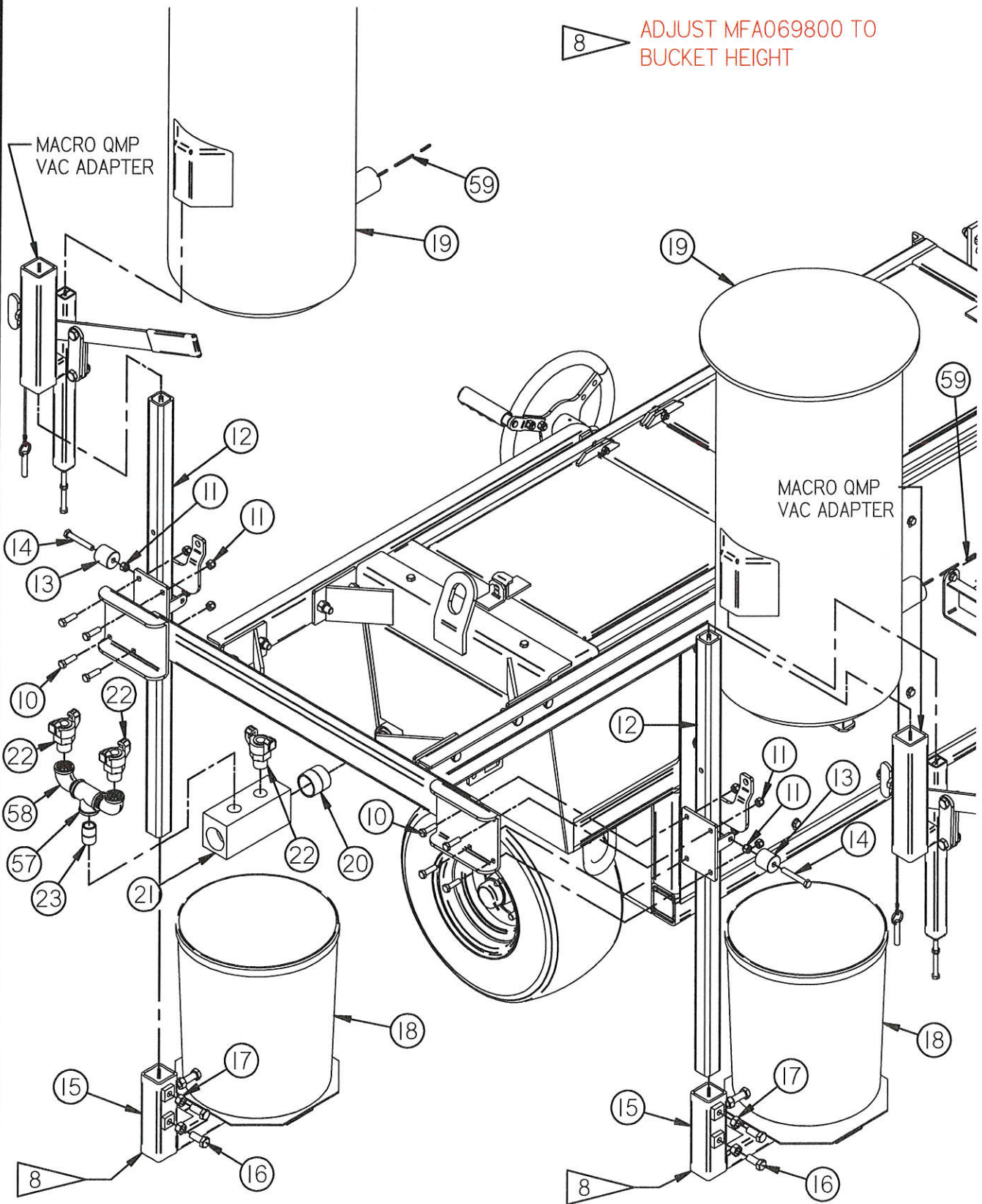
210-5 SRA QMP VACUUM SYSTEM ASSEMBLY - PAGE 02



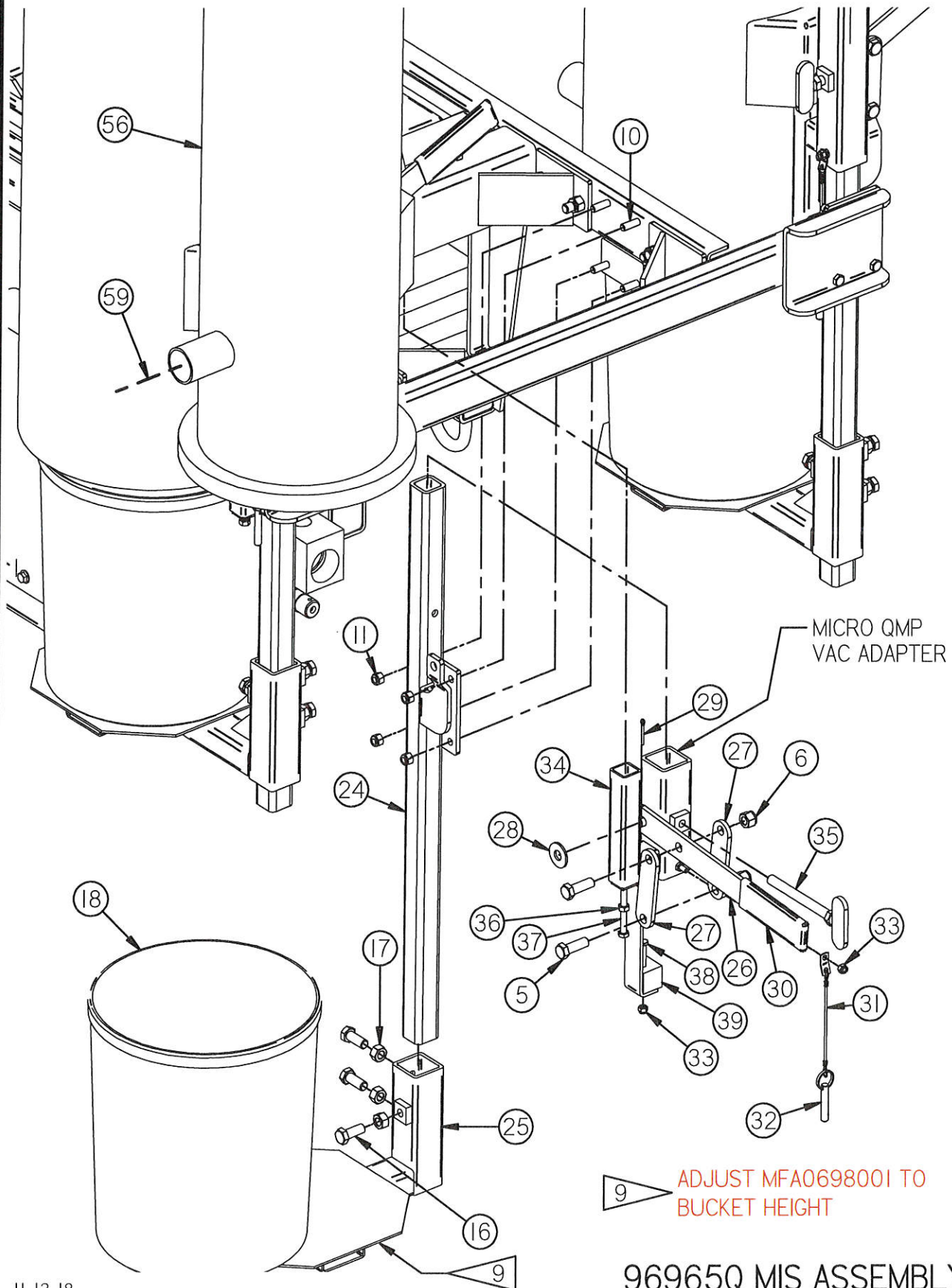
SECTION D-D

210-5 SRA QMP VACUUM SYSTEM ASSEMBLY - PAGE 03

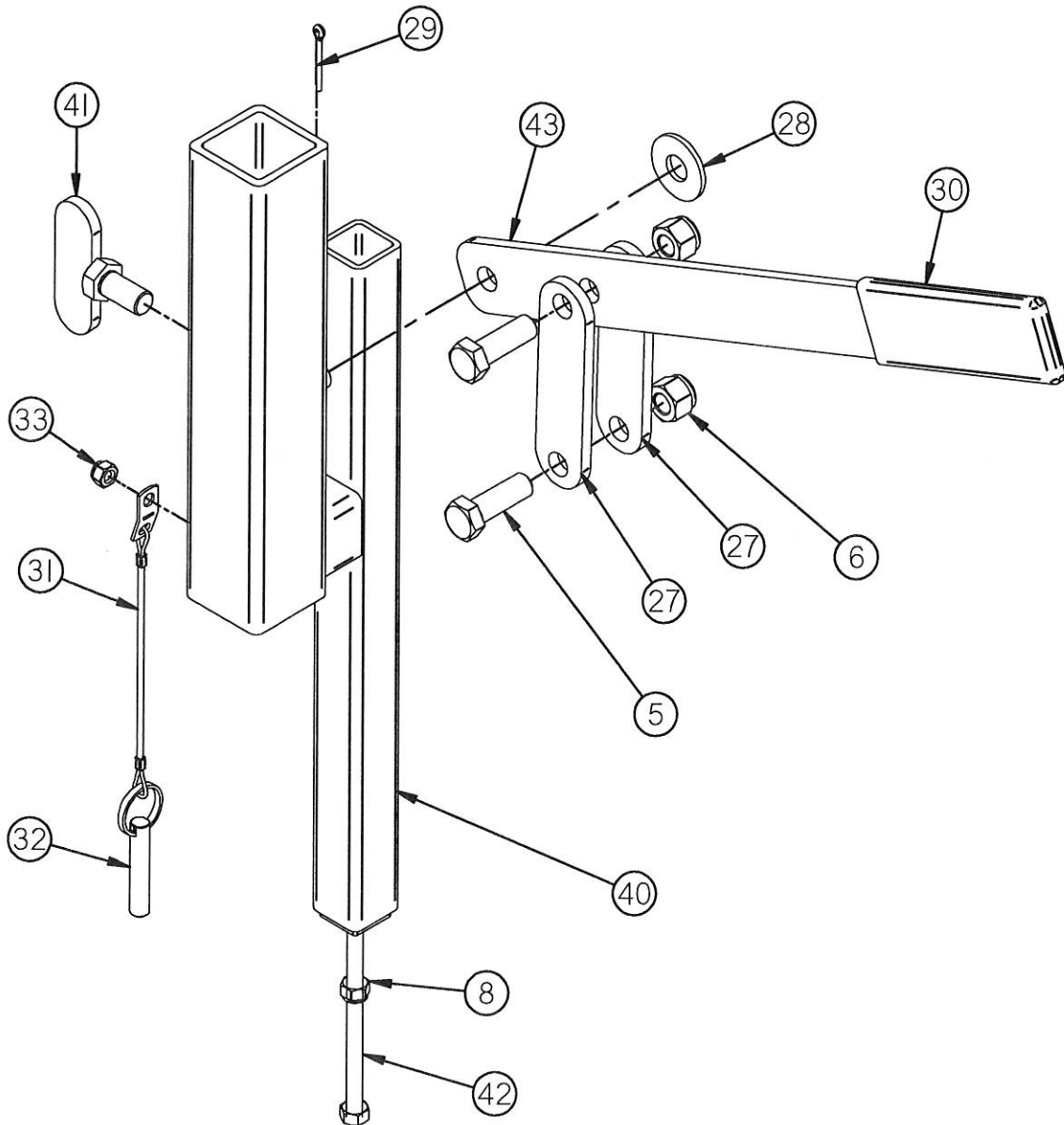
8 ADJUST MFA069800 TO BUCKET HEIGHT



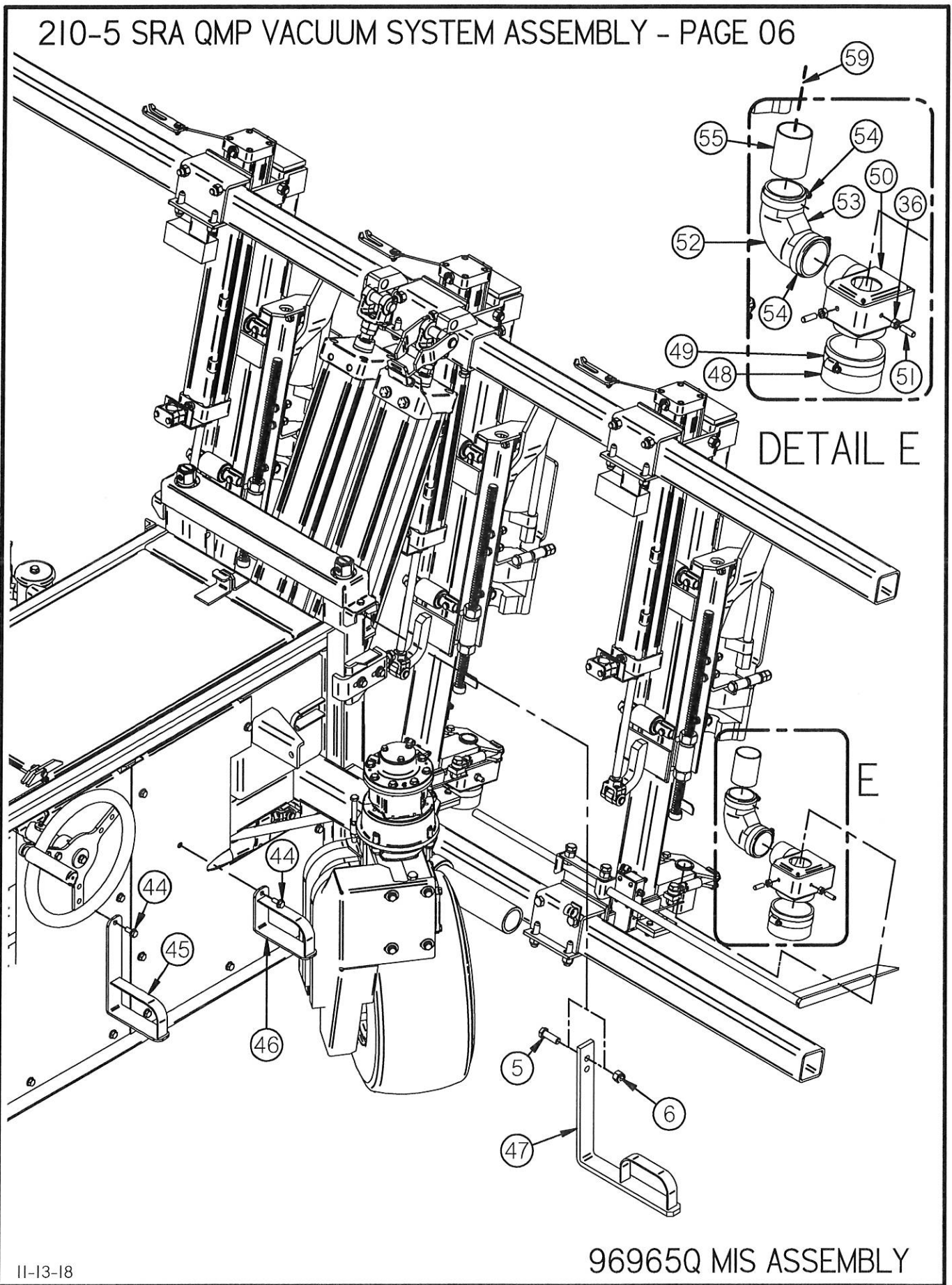
210-5 SRA QMP VACUUM SYSTEM ASSEMBLY - PAGE 04



MACRO QMP VAC ADAPTER



210-5 SRA QMP VACUUM SYSTEM ASSEMBLY - PAGE 06



DETAIL E

E

210-5 SRA QMP VACUUM SYSTEM ASSEMBLY - PAGE 07

Item No.	Part No.	Quantity	Description
1	FNG8144	1	210-3, -4, -5 SRA (MULTI-GANG)
2	MFA0698004	1	LIFTING BALE BRACKET
3	MFA0698005	1	LEFT SIDE CHANNEL
4	MFA0698006	1	RIGHT SIDE CHANNEL
5	2562 BLT	16	1/2" NC X 1.50" HX HD TAP BOLT
6	2734NUT	16	1/2" NC NYLON INSERT LOCKNUT
7	23905 BLT	2	5/16-18 X 1" U-BOLT
8	2719 NUT	6	5/16" NC NYLON INSERT LOCKNUT
9	MFA0698007	1	VACUUM POST MOUNT
10	2540 BLT	14	3/8" NC X 1.25" HX HD BOLT
11	2727NUT	16	3/8" NC NYLON INSERT LOCKNUT
12	MFA0698002	2	LARGE MOUNT POST
13	MFA0698009	2	NYLON ROLLER
14	2546 BLT	2	3/8" NC X 2.50" HX HD BOLT
15	MFA069800	2	LARGE BUCKET TRAY
16	2560BLT	9	1/2" NC X 1.25" HX HD BOLT
17	2732 NUT	9	1/2" NC STANDARD NUT
18	43058 MIS	3	5 GAL. PLASTIC PALE, BLACK
19	96951Q MIS	2	MACRO QMP VACUUM
20	27271 PFT	1	1-1/2" NPT CLOSE HEAVY NIPPLE
21	MFA06987	1	MANIFOLD FOR MULTI VACUUM
22	2006FIT	3	3/4" MALE PIPE TO QUICK COUPLER
23	2114PFT	1	3/4" X 1 1/2" NIPPLE
24	MFA0698003	1	SMALL MOUNT POST
25	MFA0698001	1	SMALL BUCKET TRAY
26	MFA069904_01	1	RAISE/LOWER LEVER - DUST COLLECTION
27	MFA069906	6	FRAME CLAMP LONG
28	2830 WAS	3	1/2" STD. FLAT WASHER
29	30221 PIN	3	1/8" X 1-1/4" COTTER PIN
30	18206GRO	3	LEVER GRIP

210-5 SRA QMP VACUUM SYSTEM ASSEMBLY - PAGE 08

Item No.	Part No.	Quantity	Description
31	303IPIN	3	LANYARD W/TAB ONE END
32	3029PIN	3	LOCK PIN
33	2716NUT	4	1/4" NC NYLON LOCK NUT
34	MFA069902Q	1	ADAPTER - LIFTING BALE - DUST COLLECTION
35	MFA0698008	1	5" BOLT SET SCREW
36	2717 NUT	11	5/16 UNC HEX NUT (ZP, GR. 5)
37	2536 BLT	1	5/16" NC X 8.00" HX HD BOLT
38	25072 BLT	1	1/4" NC X 1.75" HX HD BOLT
39	MFA069902Q_02	1	BOLT ON BLOCK
40	MFA069933Q	2	QMP VAC ADAPTER - (MOD 210B-2 SRA)
41	MFA069903	2	SET SCREW - DUST COLLECTION
42	MFA0699700Q	2	QMP 2-PORT COLLECTOR MOUNTING BOLT
43	MFA0699040	2	RAISE/LOWER LEVER - MACRO DUST COLLECTION
44	25175 BLT	4	5/16 NC X .75" LG. HEX FLG HEAD BOLT
45	MFA06984Q	2	MULTIGANG QMP HOSE HOLDER
46	MFA06984	2	MULTIGANG HOSE HOLDER
47	MFA06983	2	MULTIGANG HOSE HOLDER
48	190406 HOS	5	3" COLLECTOR HOSE (2" LONG PIECE)
49	19503 CLP	5	WORM GEAR HOSE CLAMP (3 - 4")
50	MFA069913	5	DUST COLLECTOR HEAD
51	2521 BLT	10	5/16-18 X 1" SET SCREW
52	19045 HOS	5	2" 90 DEG. SILICONE HOSE COUPLER
53	MFA069914	5	90 DEG. ELBOW CLAMP
54	195025 CLP	10	WORM GEAR HOSE CLAMP (1-1/2" - 2-1/2")
55	MFA069910_12	5	DUST HEAD ROUND TUBE
56	9695Q MIS	1	MICRO QMP VACUUM
57	2103PFT	1	3/4' PIPE TEE
58	2155 PFT	2	STREET ELL, 3/4" NPT
59'	19255 HOS	64 FEET	2" VACUUM HOSE