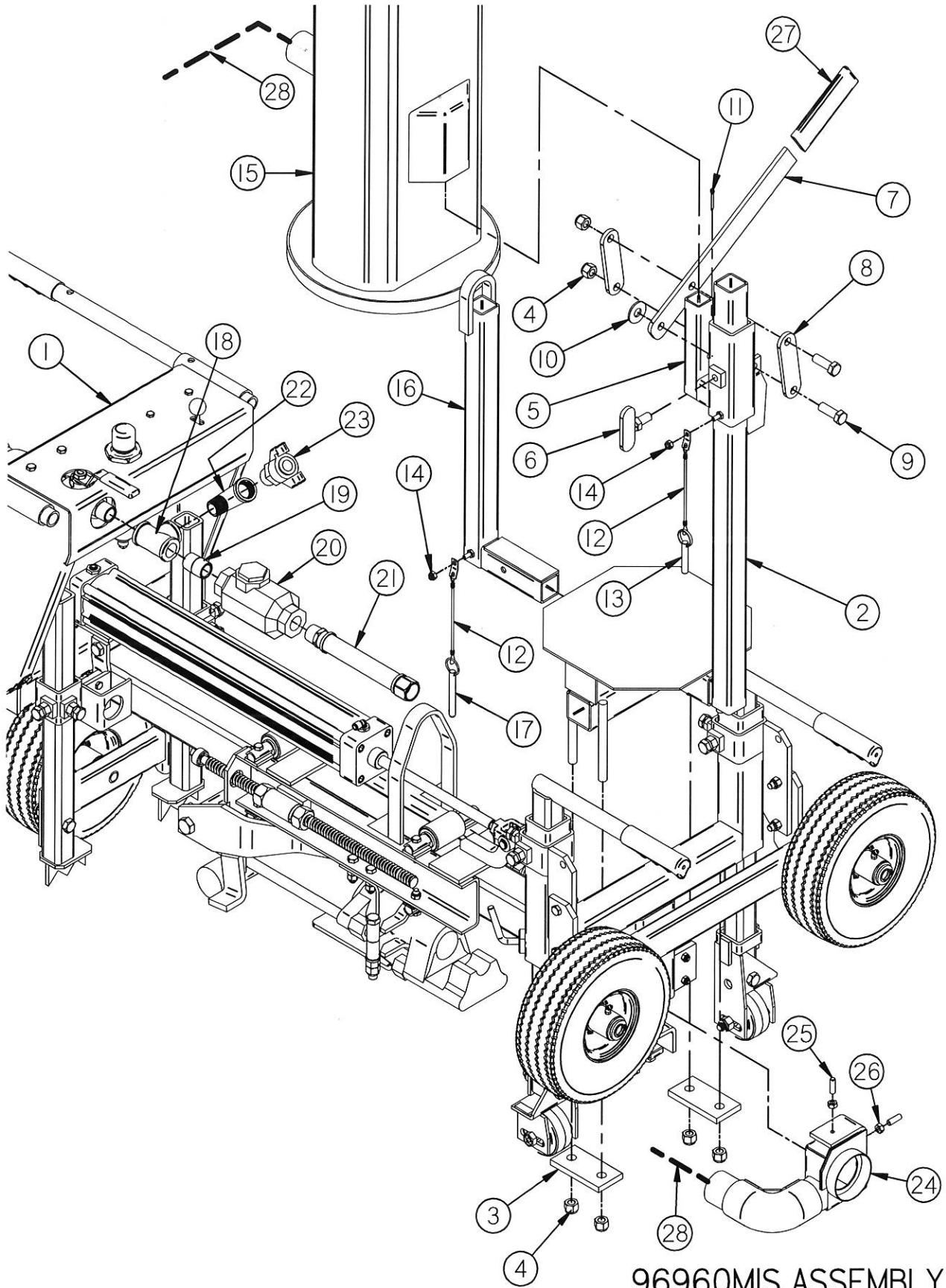


# 210B VACUUM SYSTEM ASSEMBLY - PAGE 01



## 210B VACUUM SYSTEM ASSEMBLY - PAGE 02

Item No.	Part No.	Quantity	Description
1	FNG80990	1	210B DRILL
2	MFA069900	1	DUST COLLECTION FRAME (MOD 210B - MOUNTED)
3	MFA069905	2	FRAME CLAMP SHORT
4	2734NUT	6	1/2" NC NYLON INSERT LOCKNUT
5	MFA069902	1	ADAPTER - LIFTING BALE - DUST COLLECTION
6	MFA069903	1	SET SCREW - DUST COLLECTION
7	MFA069904	1	RAISE/LOWER LEVER - DUST COLLECTION
8	MFA069906	2	FRAME CLAMP LONG
9	2562 BLT	2	1/2" NC X 1.50" HX HD TAP BOLT
10	2830 WAS	1	1/2" STD. FLAT WASHER
11	3022I PIN	1	1/8" X 1-1/4" COTTER PIN
12	303IPIN	2	LANYARD W/TAB ONE END
13	3029PIN	1	LOCK PIN
14	2716NUT	2	1/4" NC NYLON LOCK NUT
15	9695MIS	1	MICRO VACUUM
16	MFA069901	1	LIFTING BALE - DUST COLLECTION (MOD 210B)
17	3029IPIN	1	3/8" X 2" LOCK PIN
18	2103PFT	1	3/4" PIPE TEE
19	2114PFT	1	3/4" X 1 1/2" NIPPLE
20	1601OIL	1	3/4" PINT OILER
21	HOS150I	1	MANIFOLD TO DRILL MOTOR HOSE 30"
22	2155 PFT	1	STREET ELL, 3/4" NPT
23	2006FIT	1	3/4" MALE PIPE TO QUICK COUPLER
24	MFA069913	1	DUST COLLECTOR HEAD
25	252I BLT	2	5/16-18 X 1" SET SCREW
26	2717 NUT	2	5/16 UNC HEX NUT ( ZP, GR. 5 )
27	18206GRO	1	LEVER GRIP
28*	19255 HOS	1	2" VACUUM HOSE