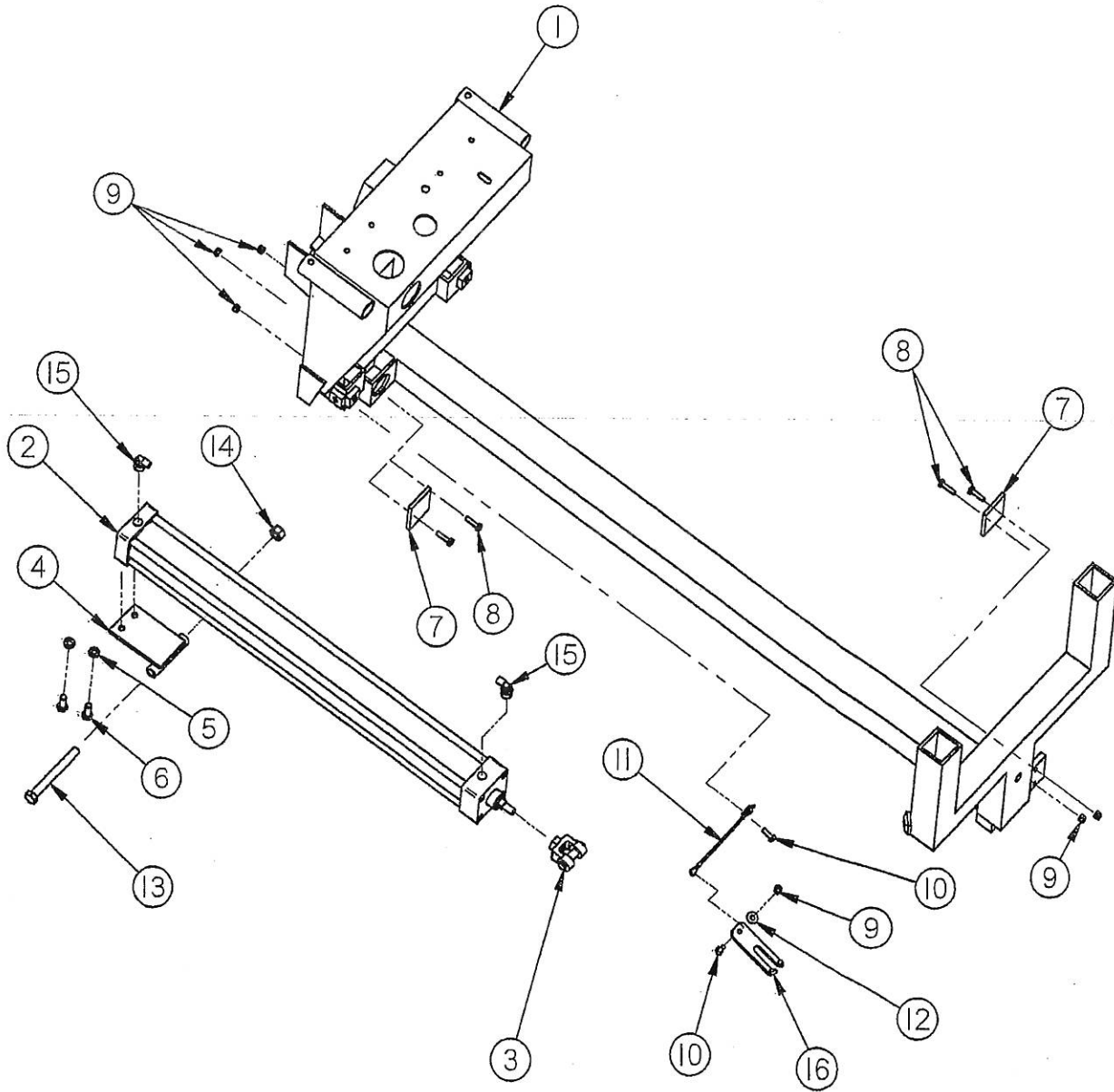


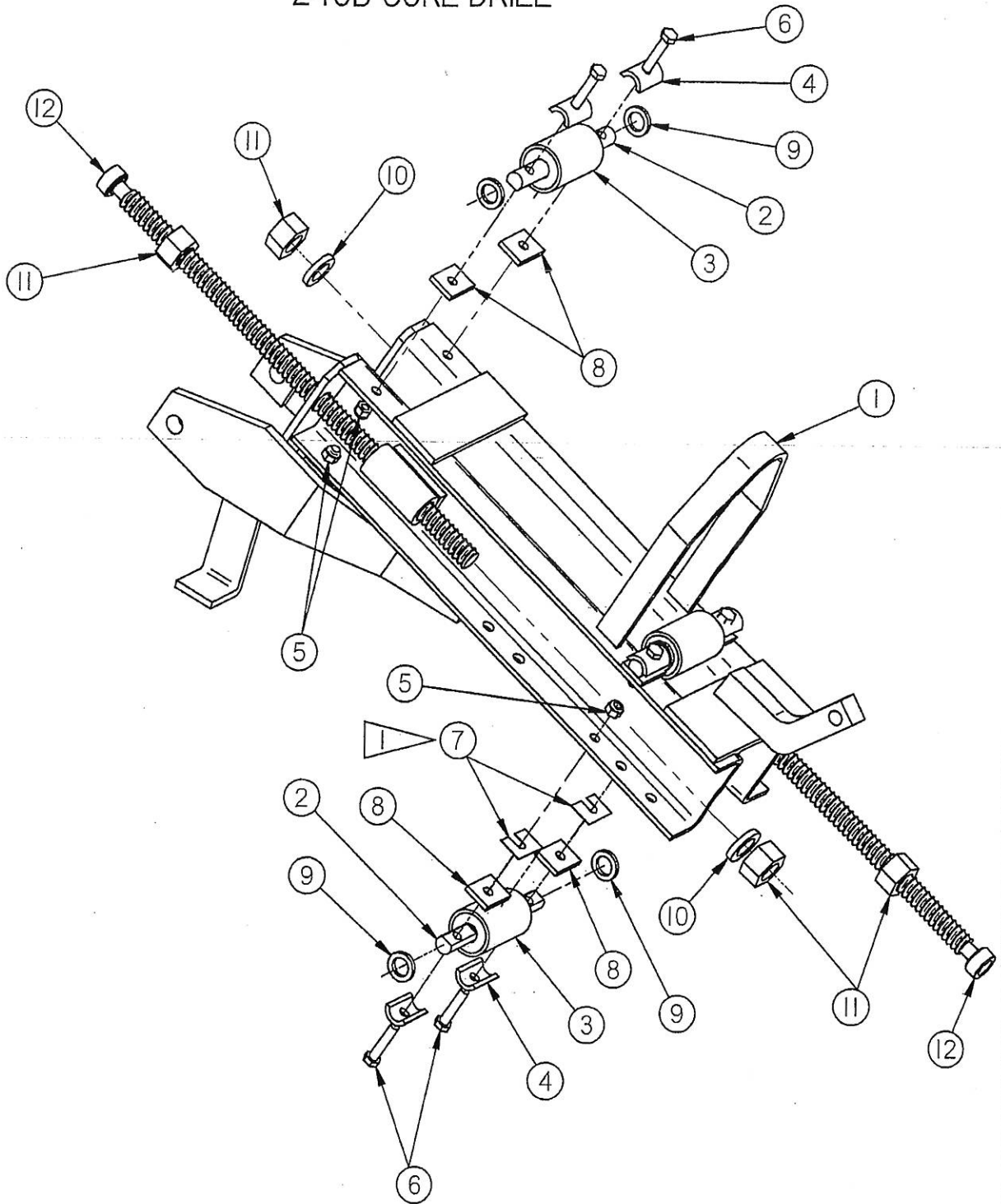
240B CORE DRILL FEED CYLINDER ASSEMBLY



240B CORE DRILL FEED CYLINDER ASSEMBLY

Item No.	Part No.	Quantity	Description
1	MNF 050202	1	MAIN FRAME 240B
2	051415 .CYL	1	2.5" X 24.5" FEED CYLINDER
3	0501CYL	1	CYLINDER CLEVIS
4	MFA 0624	1	FEED CYLINDER MOUNT BRACKET
5	2821 WAS	2	3/8" LOCK WASHER
6	2538 BLT	2	3/8" NC X 1.00" HX HD BOLT
7	MFA0626	2	STOP PAD
8	2503BLT	4	1/4" NC X 1.00" BOLT, GR. 5
9	2716NUT	6	1/4" NC NYLON LOCK NUT
10	2501BLT	2	1/4" X 3/4" BOLT
11	3031PIN	1	LANYARD W/TAB ONE END
12	2801 WAS	1	1/4" FLAT WASHER
13	2572BLT	1	1/2" NC X 4 1/2" BOLT, GR. 5
14	2734NUT	1	1/2" LOCKNUT
15	2052FIT	2	1/4" TO 3/8" 90 DEG. FITTING
16	CRA0218	1	CARRIAGE LOCK

CARRIAGE ASSEMBLY -- ROLLERS & STOPS
240B CORE DRILL



CARRIAGE ASSEMBLY -- ROLLERS & STOPS
240B CORE DRILL

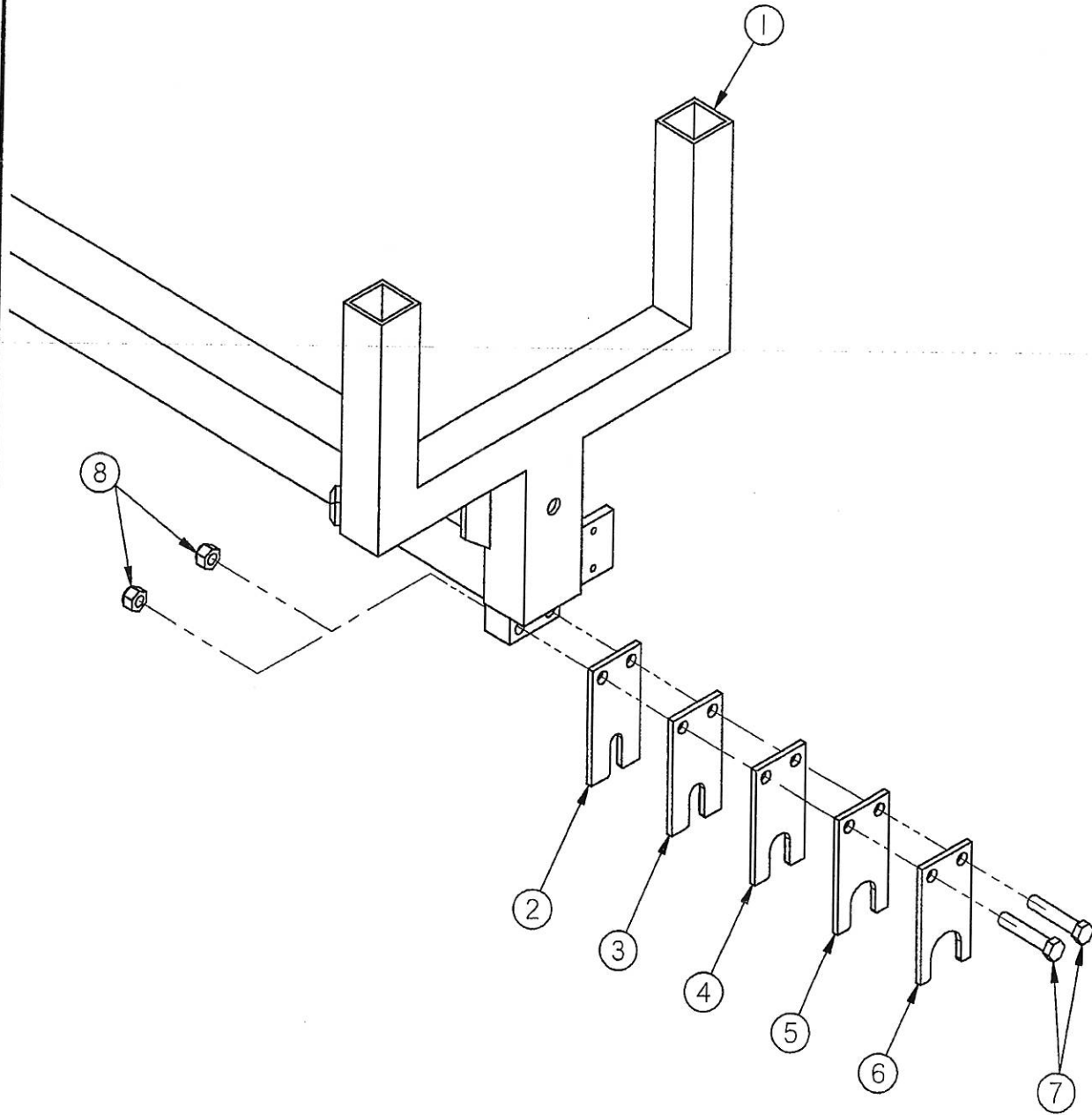
Item No.	Part No.	Quantity	Description
1*	CGR01022	1	CARRIAGE, 240B CORE DRILL
2*	CRA0234	4	ROLLER BEARING AXLE
3*	CRA0233	4	ROLLER BEARING DRUM
4*	CRA0230	8	BEARING KEEPER
5*	2719NUT	8	5/16" NYLON LOCK NUT
6	2526BLT	8	5/16" X 1 1/2" BOLT
7*	7009TAB	4	STAINLESS STEEL SHIM (AS NEEDED)
8*	70105TAB	8	3/16" SHIM (ROLLER BRG. AXLE)
9	2841WAS	8	5/8" WASHER (10 GAGE)
10	2852WAS	2	3/4" LOCK WASHER
11	27490NUT	4	3/4" COIL ROD NUT
12	CRA02030	2	3/4 X 18" STOP ROD

 ITEM. NO. 7: USED AS NEEDED; LOWER ROLLER ASSEMBLY ONLY

240B CORE DRILL MOTOR & CARRIAGE

Item No.	Part No.	Quantity	Description
1*	FNG80998-02	1	CARRIAGE ASSEMBLY 240B CORE DRILL
2*	CRA02142	1	REAR CORE DRILL MTR. MT.
3*	0153DRL	1	UNITEC 3-SPD. PNEUMATIC CORE DRILL MOTOR
4	CRA02143	1	FRONT CORE DRILL MTR. MT.
5	2538BLT	4	3/8" X 1" BOLT
6	2727NUT	4	3/8" LOCKNUT
7*	2564BLT	1	1/2" X 2 1/2" BOLT
8	2832WAS	1	1/2" LOCK WASHER
9*	2732NUT	1	1/2" STANDARD NUT
10*	9 3801 1040	1	MUFFLER, CORE DRILL MOTOR
11	9 1110 4010	4	METRIC SOCKET CAP SCREW (M6 - 1.0 X 12 MM, 8.8)
12	2053FIT	1	3/8" TO 1/4" MALE 90
13*	2118PFT	1	NIPPLE 3/4 NPT X 2.5"
14	2150PFT	1	3/4" 90 PIPE FITTING
15*	2590BLT	1	5/8" X 8" BOLT
16*	2742NUT	1	5/8" LOCKNUT

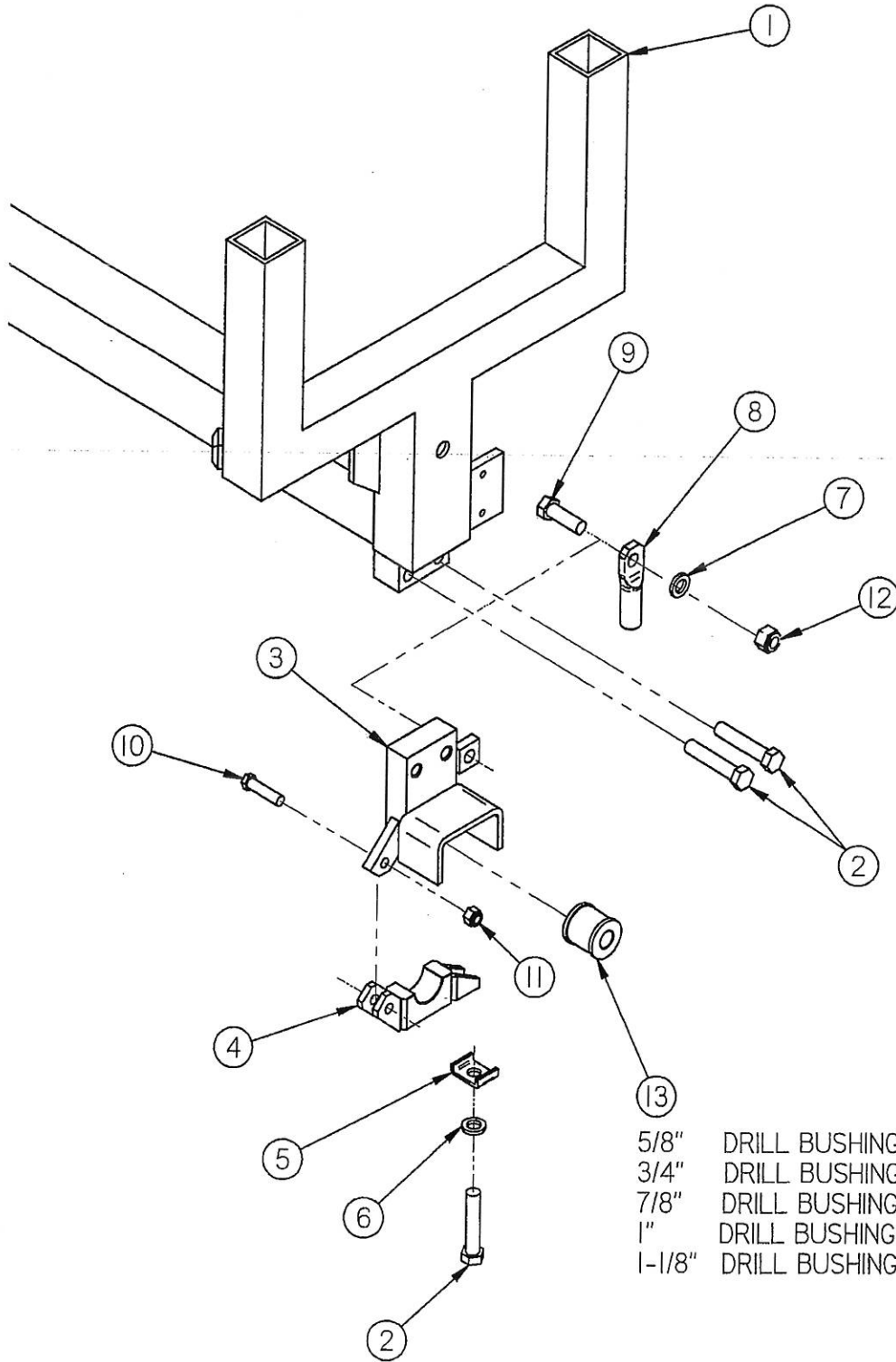
BIT GUIDES 240B CORE DRILL



BIT GUIDES 240B CORE DRILL

Item No.	Part No.	Quantity	Description
1	MNF050201	1	MAIN FRAME 240B 24"DD
2	MFA06315	1	5/8" BIT GUIDE, CORE DRILL
3	MFA063151	1	3/4" BIT GUIDE, CORE DRILL
4	MFA063152	1	1" BIT GUIDE, CORE DRILL
5	MFA063153	1	1-1/4" BIT GUIDE, CORE DRILL
6	MFA063154	1	1-1/2" BIT GUIDE, CORE DRILL
7*	2564BLT	2	1/2" X 2 1/2" BOLT
8*	2734NUT	2	1/2" LOCKNUT

240B ROCK DRILL CONVERSION BIT GUIDE

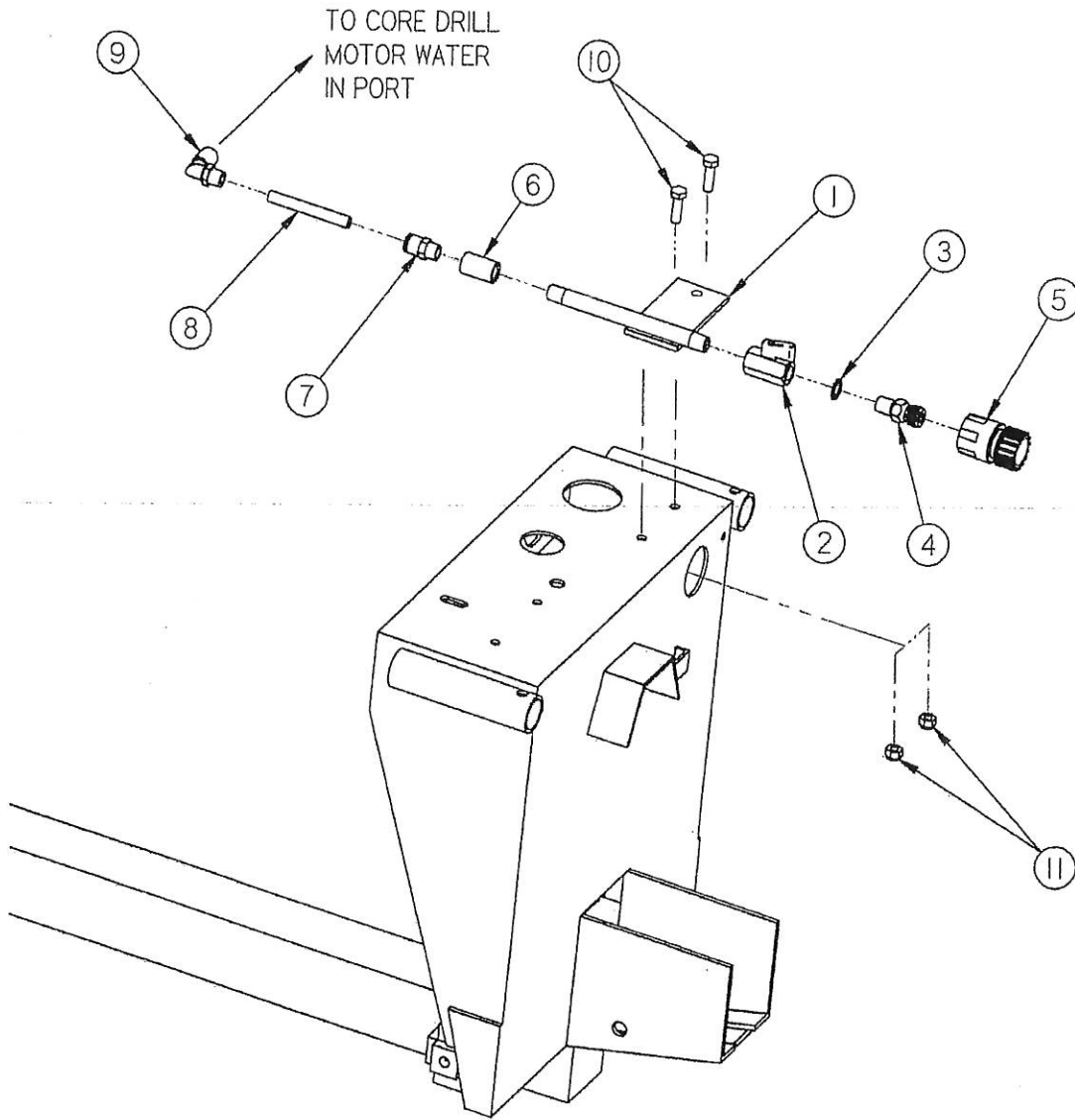


- 5/8" DRILL BUSHING P/N 1108MCP
- 3/4" DRILL BUSHING P/N 1109MCP
- 7/8" DRILL BUSHING P/N 1110MCP
- 1" DRILL BUSHING P/N 1111MCP
- 1-1/8" DRILL BUSHING P/N 1112MCP

240B ROCK DRILL CONVERSION BIT GUIDE

Item No.	Part No.	Quantity	Description
1	MNF050201	1	MAIN FRAME 240B 24"DD
2*	2564BLT	3	1/2" X 2 1/2" BOLT
3*	MFA06310	1	UPPER BIT GUIDE, CORE DRILL (240B / 240B-SRA)
4	MFA0609	1	LOWER BIT GUIDE (1.38")
5	MFA0690	1	BIT GUIDE KEEPER
6	2832WAS	1	1/2" LOCK WASHER
7	2831WAS	1	7/8"OD X 1/2"ID WASHER 10GA.
8	MFA0674	1	SWIVEL BOLT (1/2-13UNC)
9*	2562BLT	1	1/2" X 1 1/2" BOLT
10*	2541BLT	1	3/8" X 1 1/2" BOLT
11*	2727NUT	1	3/8" LOCKNUT
12*	2734NUT	1	1/2" LOCKNUT
13	1108MCP	1	DRILL STEM BUSHING, 5/8" X 1-7/16" LG.

WATER VALVE -- 240B CORE DRILL



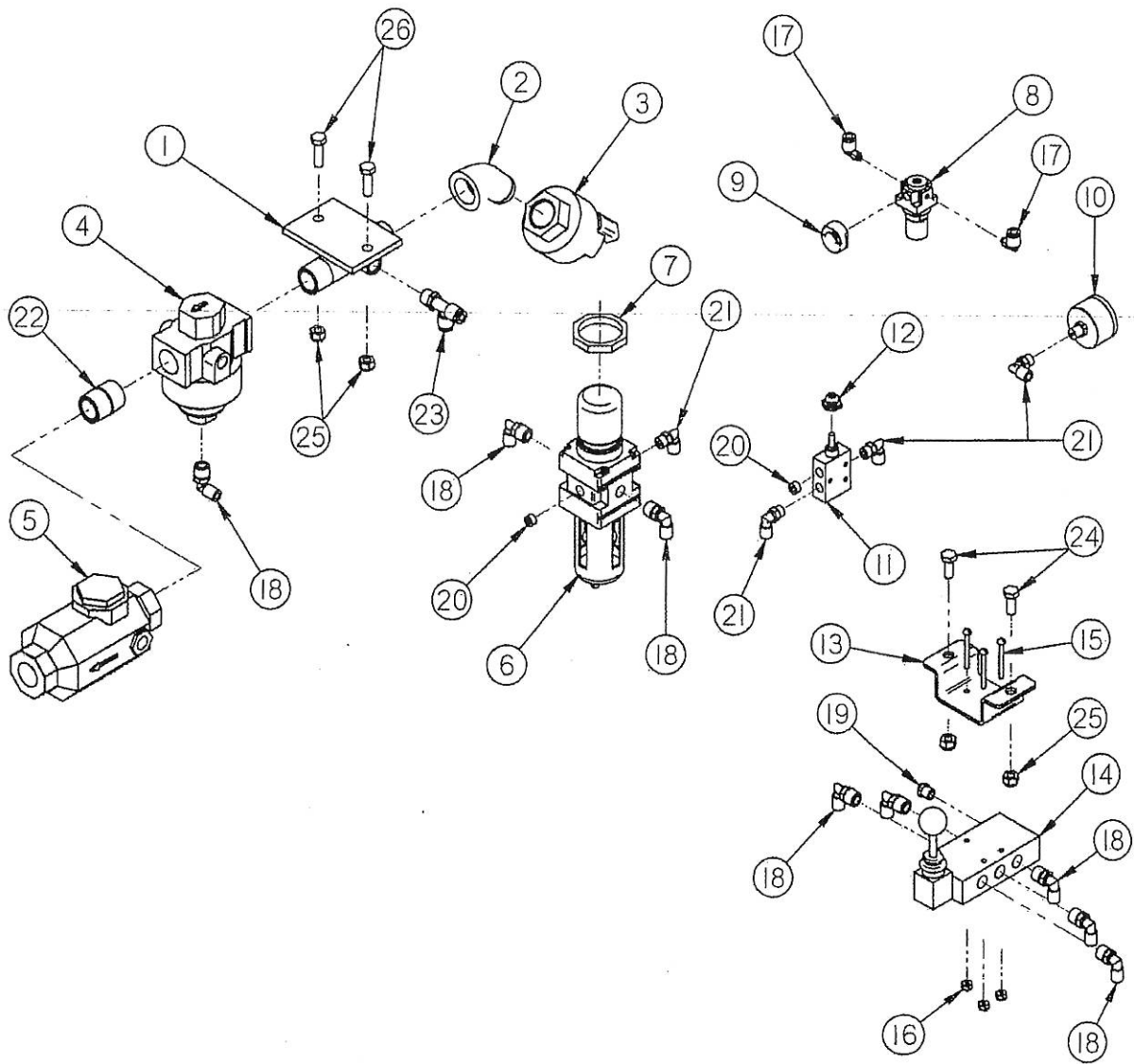
WATER VALVE -- 240B CORE DRILL

Item No.	Part No.	Quantity	Description
1	SRS16825	1	WATER MANIFOLD, 240B
2	9 2014 0900	1	WATER VALVE, CORE DRILL
3	9 2126 0140	1	SEALING WASHER, WATER VALVE
4	9 2050 0150	1	QUICK CONNECTOR, WATER VALVE
5	WTRWHIZ_13009	1	3/4"NPT FM HOSE QUICK CONNECTOR
6	2144PFT	1	FULL COUPLING, 1/4" NPT (STEEL)
7	2070FIT	1	3/8" TO 1/4" MALE CONNECTOR
8	2053FIT	1	3/8" TO 1/4" MALE 90
9	1905H0S	1	3/8" BLACK TUBING
10	2520BLT	2	5/16" X 1" BOLT
11	2719NUT	2	5/16" NYLON LOCK NUT



ITEM REF. NO. 8:
FOR SERVICE PART ORDER 72"

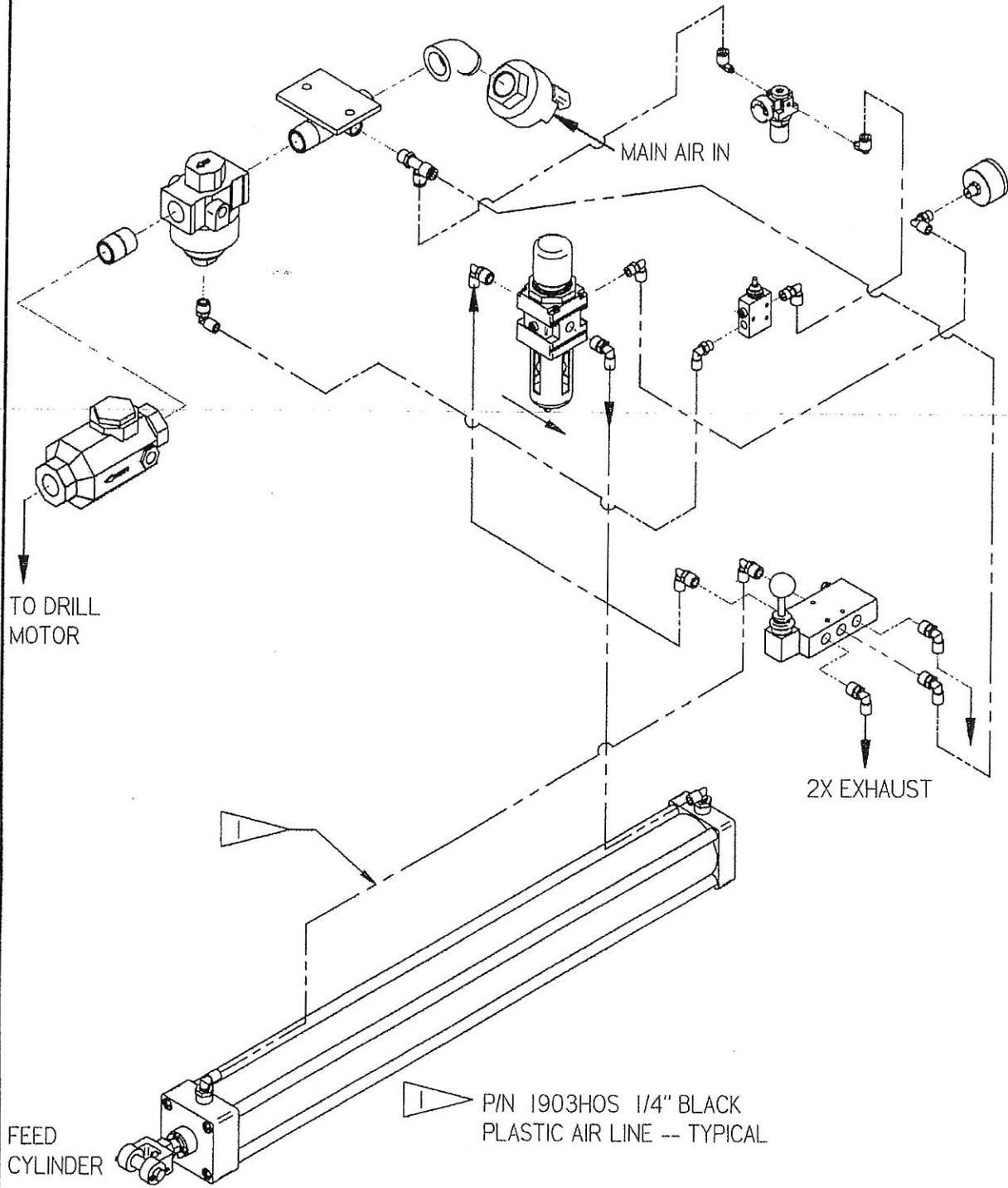
CONTROL PANEL ASSEMBLY -- 240B CORE DRILL



CONTROL PANEL ASSEMBLY -- 240B CORE DRILL

Item No.	Part No.	Quantity	Description
1	MFA0677	1	AIR MANIFOLD, 210B / 240B
2	2148PFT	1	3/4" 45 DEG. STREET ELL
3	20090FIT	1	3/4" AUTO LOCKING FEMALE AIR COUPLING
4	08113REG	1	3/4" REGULATOR
5	1601OIL	1	3/4" PINT OILER
6	08092REG	1	AIR PRESSURE REGULATOR
7	08058REG	1	LOCK RING FOR 08092REG
8	08108REG	1	REGULATOR WITH 0-125 MAX PSI
9	09024GAU	1	GAUGE 0-150 MAX PSI
10	09022GAU	1	GAUGE 0-60 1/8" MPT
11	06095VAL	1	TOGGLE SWITCH
12	1828GRO	1	RED BOOT FOR 06095VAL
13	SRU13460	1	VALVE SPACER
14	060102VAL	1	3 WAY POSITION VALVE WITH KNOB
15	2478BLT	3	#8-32" X 1 1/2" MACH. SCREW
16	2712NUT	3	8/32" NYLON LOCK NUT
17	20754FIT	2	1/4" to 10/32" 90 DEG. FITTING
18	2051FIT	8	1/4" TO 1/4" 90 DEG. FITTING
19	1001BRV	1	1/8" BREATHER VENT
20	21010PFT	2	1/8" PIPE PLUG - SOCKET HD.
21	2050FIT	4	1/4" TO 1/8" 90 DEG. FITTING
22	2112PFT	1	3/4" NPT CLOSE NIPPLE, SCH. 80
23	2035FIT	1	1/4" X 1/4" MALE RUN T
24	2519BLT	2	5/16" X 3/4" BOLT
25	2719NUT	4	5/16" NYLON LOCK NUT
26	2520BLT	2	5/16" X 1" BOLT

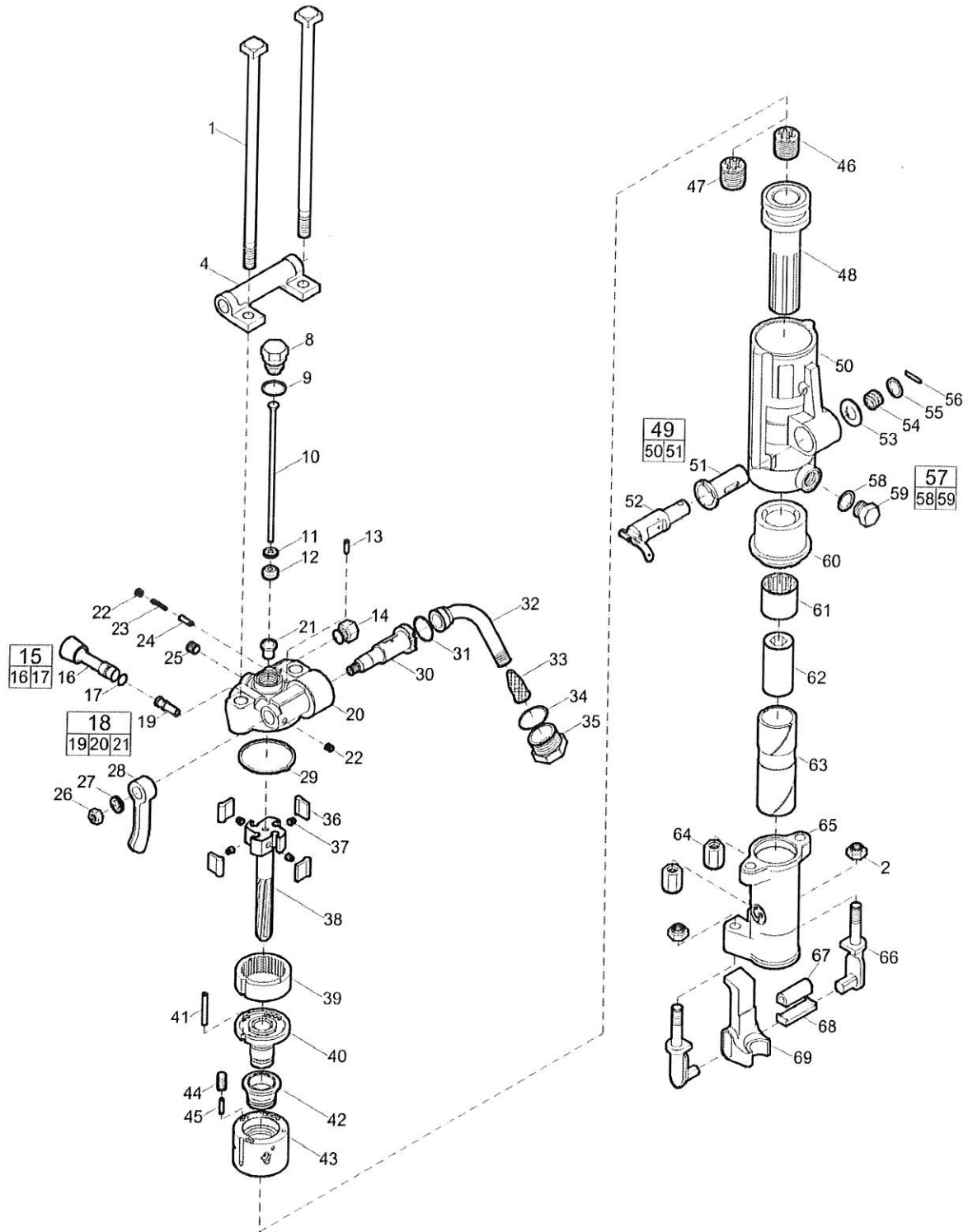
CONTROL PANEL SCHEMATIC -- 240B CORE DRILL



2-13-09

FNG80998-08

Spare parts list CP 0032 A 7/8" x 3 1/4"



Refer to the Parts Online web page for most up-to-date information. The printed information might be outdated.

Item	Part No.	Name	Qty	L
1	R086623	Bolt - Thru	2	
2	R005742	Nut - Elastic stop	2	A
4	R086608	Bracket - Handle	1	
8	R076793	Plug - Air tube	1	
9	R000537	Gasket - Tube plug	2	
10	R077184	Tube - Air	1	
11	R075449	Washer - Air tube	1	
12	R075099	Rubber - Air tube	1	
13	R075802	Pin - Valve plunger	1	
14	R076372	Plug - Water valve	1	
15	R079130	Water valve port plug, complete	1	
16	-	Water valve port plug	1	
17	C079489	O-ring	1	
18	R087948	Backhead, complete	1	
19	R098054	Bushing - Water valve	1	
20	-	Backhead	1	
21	R137738	Bushing - Blow tube	1	
22	C068064	Plug - Pipe	2	
23	R085671	Spring - Valve plunger	1	
24	R086627	Plunger - Throttle valve	1	
25	C068799	Plug - pipe, Ø 1/4 in., Ø 6.5 mm	1	C
26	P002149	Nut - Hexagon	1	D
27	C036717	Lockwasher - Head latch	1	E
28	R079124	Handle - Throttle valve	1	
29	H0979432	Gasket	1	
30	R086628	Valve - Throttle	1	
31	P103521	O-ring	1	
32	R075265	Swivel - Air inlet	1	
33	R005584	Screen - Air inlet	1	
34	R110317	O-ring	1	
35	R000530	Air swivel nut	1	
36	R075267	Pawl	4	
37	R086654	Spring - Pawl	4	
38	R086622	Bar - Rifle	1	

Refer to the Parts Online web page for most up-to-date information. The printed information might be outdated.

Item	Part No.	Name	Qty	L
39	R076194	Ring - Ratchet	1	
40	R098085	Bushing - Valve guide	1	
41	R075772	Pin - Valve case dowel	1	
42	R076263	Valve	1	
43	R076264	Case - Valve	1	
44	R098084	Plug - Oil regulating	1	
45	R085625	Stem - Oil regulating	1	
46	R075839	Nut - Rifle bar	1	F
47	R075826	Nut - Rifle bar	1	G
48	R000088	Piston	1	
49	R087990	Cylinder, complete	1	
50	--	Cylinder	1	
51	R086611	Bushing - Blower valve	1	
52	R086612	Valve - Blower	1	
53	R075777	Washer - Blower valve	1	
54	R075778	Spring - Blower valve	1	
55	R075780	Washer - Valve spring	1	
56	R076266	Pin - Spring	1	
57	R085611	Oil plug, complete	1	
58	R091176	Gasket - Oil plug	1	
59	--	Oil plug	1	
60	R042161	Bushing - Cylinder	1	
61	R086733	Nut - Chuck rotation	1	
62	R099374	Chuck, 7/8" x 31/4" (22 x 82.5 mm)	1	
63	R041321	Sleeve - Chuck, 7/8" x 31/4" (22 x 82.5 mm)	1	
64	R085756	Nut - Thru bolt	2	
65	R041320	Fronthead, 7/8" x 31/4" (22 x 82.5 mm)	1	
66	R093896	Tunnion - Retainer	2	
67	R093897	Buffer - Retainer	1	
68	R093898	Retainer - Latch shoe	1	
69	R093913	Retainer, 7/8" (22 mm)	1	

Comments for Page: CP 0032 A 5/8" x 3/4"

(L)OCAL REMARKS

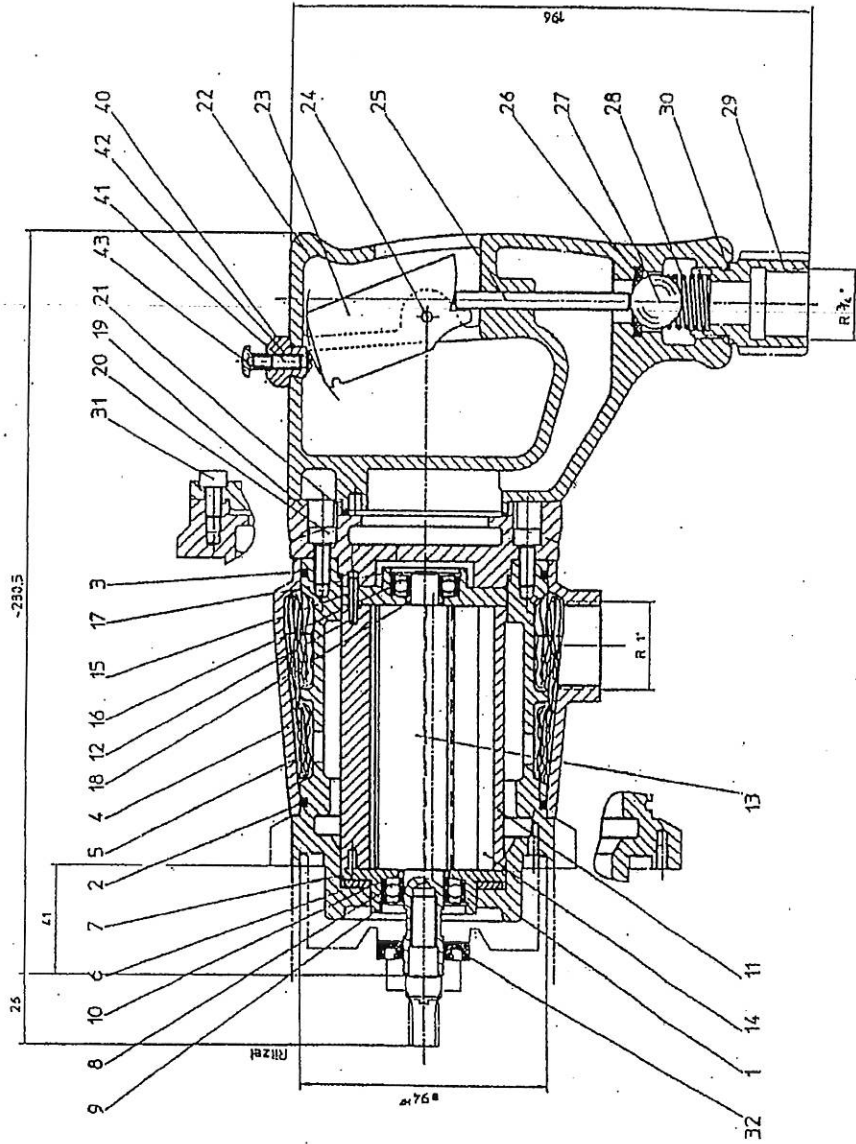
A | 5/8" - 11

B | 1/8"

C | 1/4"

Refer to the Parts Online web page for most up-to-date information. The printed information might be outdated.

**Core Drill 2 1333 0010 Motor
Model 2 1313 0050**



Core Drill Pneumatic Motor Model 2 1313 0050 Parts List

<u>POS. NO.</u>	<u>ITEM NO.</u>	<u>DESCRIPTION</u>	
2 + 3	9 1901 4420	O-Ring	
1	2 1313 1010	Motor Housing	
4	1 2034 6100	Sound Absorber	
5	2 1313 1120	Turning Sleeve	
6	9 1802 0260	Spring, Belleville	
7	7 1401 1100	End Plate	
8	9 1003 0030	Bearing	SEE # 101 583
9	9 1703 0100	Snap Ring	
10	1 1501 1090	Spacer	
11	3 7339 1020	Cylinder Bushing	
12	9 1630 0270	Adapter Sleeve	
13	2 1314 1030	Rotor	
14	3 7343 1050	Vane	
15	2 1313 1110	End Plate	
16	9 1003 0010	Bearing	4-17-01-010-05-4
17	9 1703 0050	Ring, Snap	4-26-16-001-00-5
18	2 1301 1090	Spacer	
19	2 1313 1130	Motor Cover	
20	9 1110 4020	Fillister Head Screw	
21	9 1901 3480	O-RING	
32	9 1905 0780	Sealing, Radial Shaft	