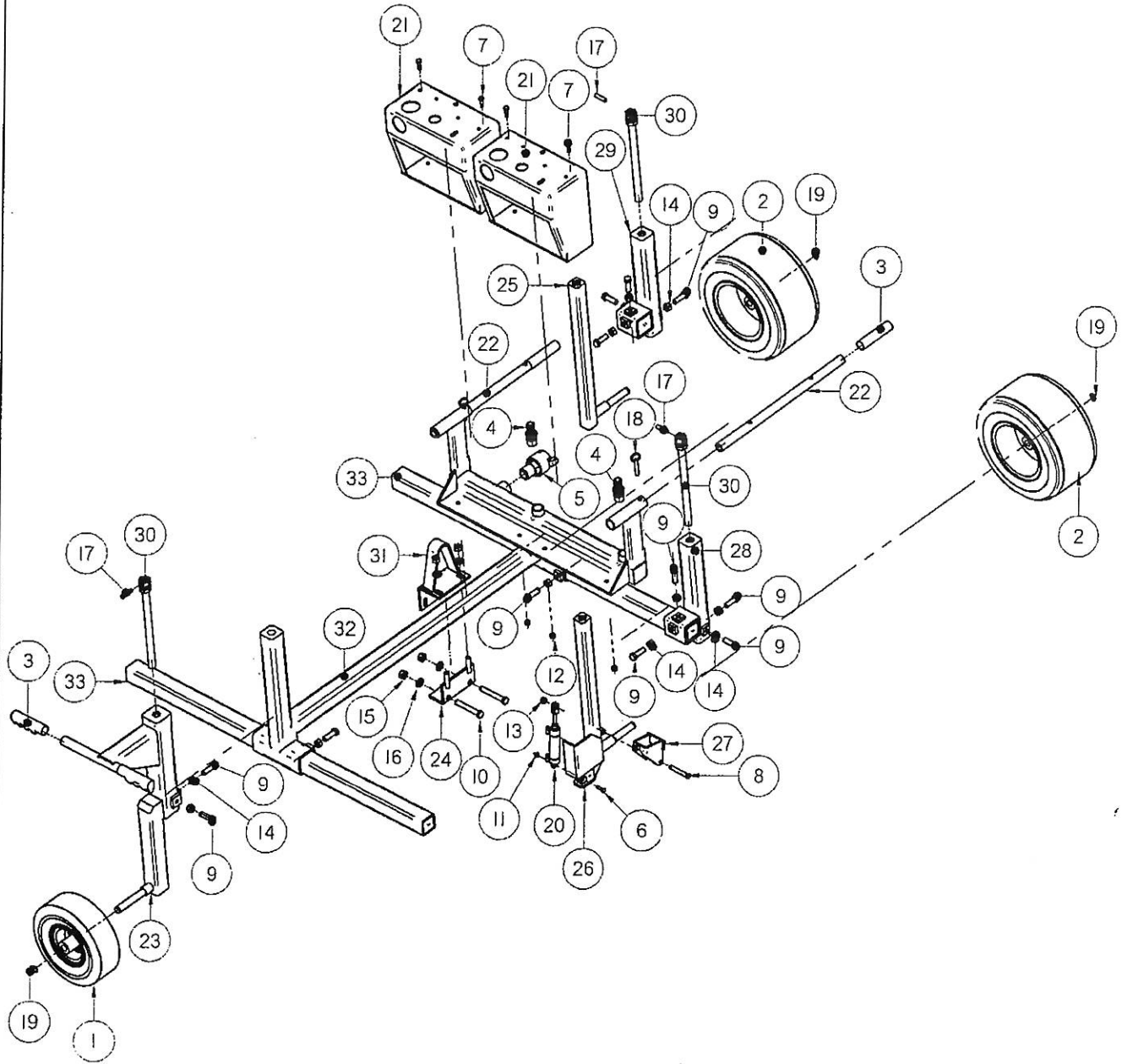


PARTS ASSEMBLY



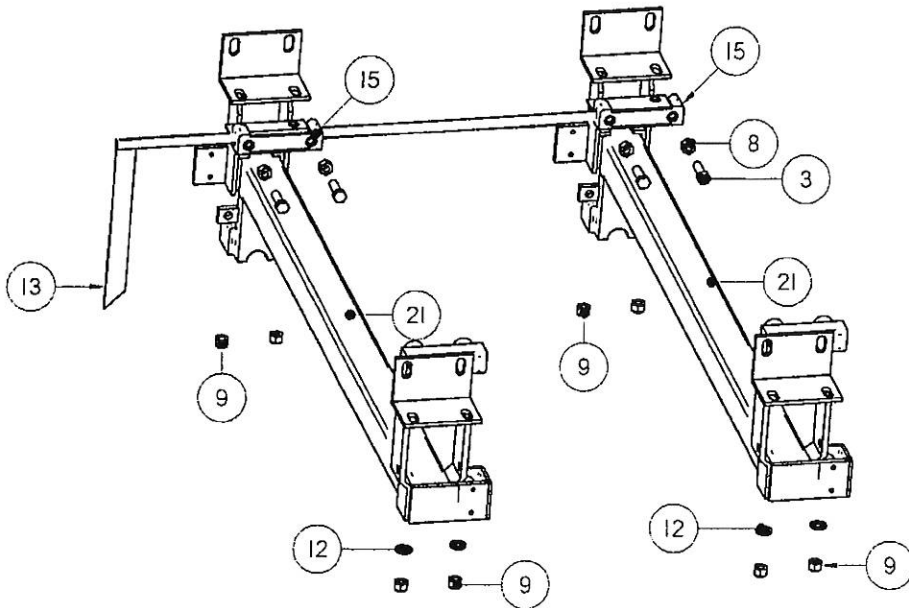
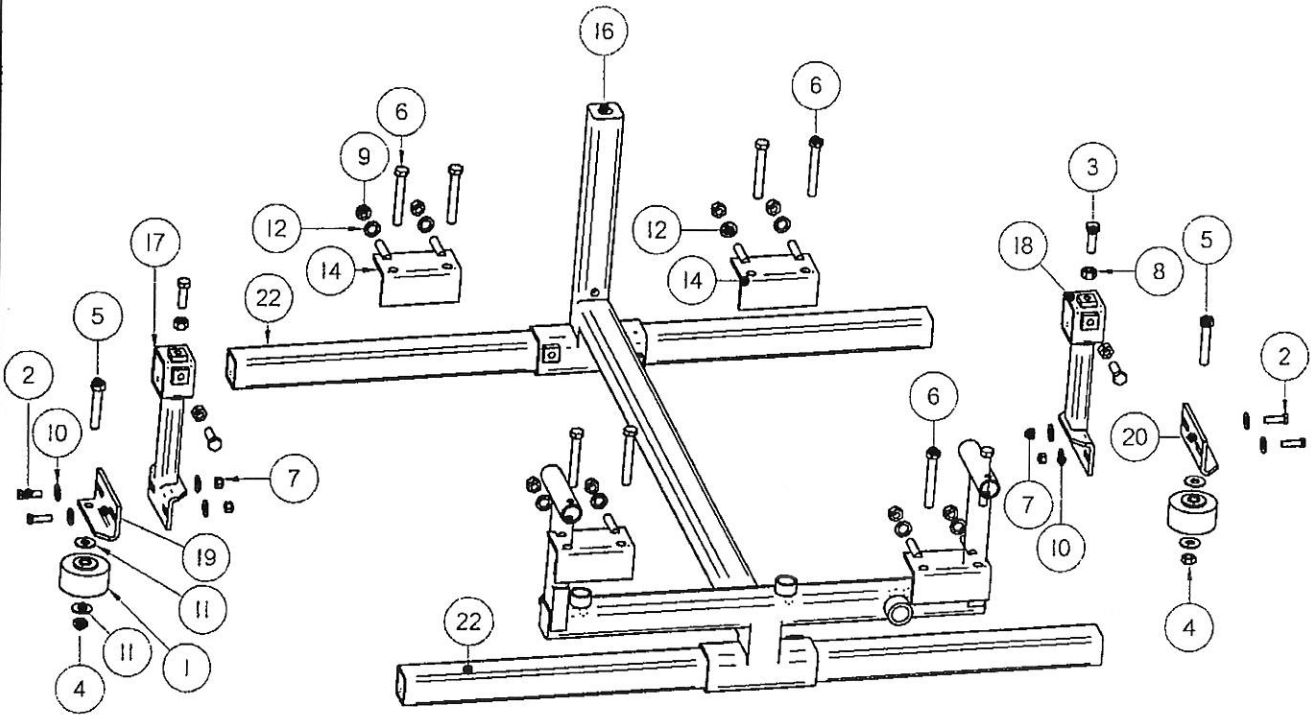
FNG8112-10

PARTS ASSEMBLY

Item Number	File Name	Quantity	Description
1	0202WHL.asm	1	REAR WHEEL
2	0213WHL.par	2	REAR WHEEL 210-2
3	1820GRO.par	4	HANDLE GRIP
4	1999FIT.par	2	3/4" X 3/4" HOSE SWIVEL
5	2009IFIT.asm	1	QUICK COUPLING 1" MALE PIPE
6	2503BLT.par	1	1/4" X 1" BOLT
7	2520BLT.par	4	5/16" X 1" BOLT
8	2546BLT.par	1	3/8" X 2 1/2" BOLT
9	2562BLT.par	12	1/2" X 1 1/2" BOLT
10	2568BLT.par	2	1/2" X 3 1/2" BOLT
11	2716NUT.par	1	1/4" NYLON LOCK NUT
12	2719NUT.par	3	5/16" NYLON LOCK NUT
13	2727NUT.par	1	3/8" LOCKNUT
14	2732NUT.par	12	1/2" STANDARD NUT
15	2734NUT.par	4	1/2" LOCKNUT
16	2831WAS.par	4	7/8"OD X 1/2"ID WASHER 10GA.
17	3006PIN.par	3	3/8" X 1 1/2" ROLL PIN
18	3029PIN.par	2	LOCK PIN
19	3036PIN.par	3	SNAP RING
20	BRAKECYLASM.asm	1	BRAKE CYLINDER ASSEMBLY
21	MFA06150.par	2	CONTROL PANEL
22	MFA0617.par	2	REAR LIFTING HANDLE
23	MFA0641.par	1	FRONT HANDLE ASSEMBLY
24	MFA06420.par	1	2" FEED BAR CLAMP
25	MFA0656.par	1	REAR WHEEL ASSEMBLY
26	MFA0657.par	1	REAR WHEEL ASSEMBLY WITH BRAKE
27	MFA0658.par	1	BRAKE PAD
28	MFA0659.par	1	LEFT REAR LEG SCREW JACK
29	MFA06590.par	1	RIGHT REAR LEG SCREW JACK
30	MFA06591.par	3	SCREW JACK
31	MFA0660.par	1	LIFTING BALE
32	MNF0514.par	1	STANDARD 2 GANG FRAME
33	SRUI318.par	2	OUTSIDE TOOL BAR

FNG8112-10

POINTER AND GUIDE WHEEL ASSEMBLIES



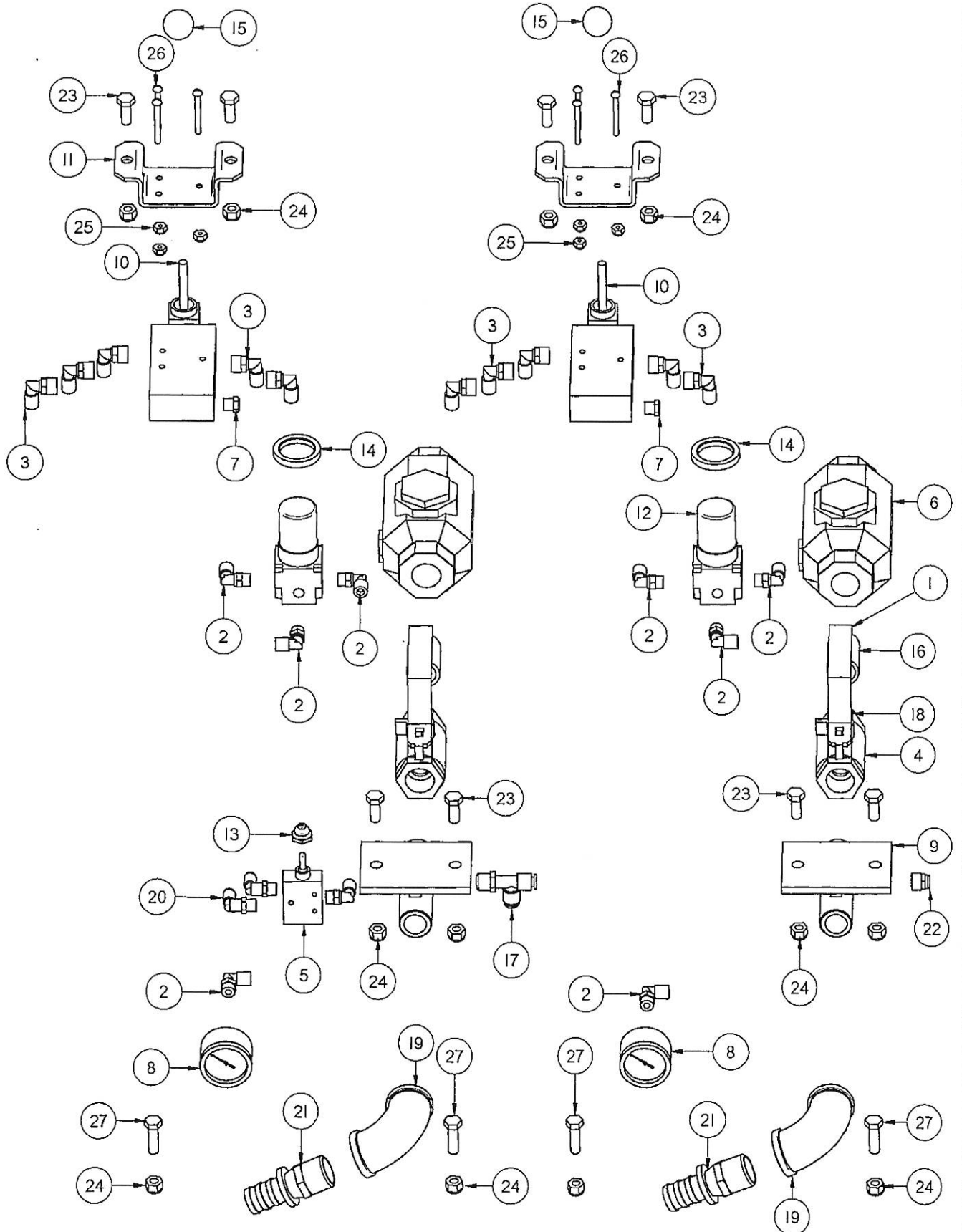
FNG8112-20

POINTER AND GUIDE WHEEL ASSEMBLIES

Item Number	File Name	Quantity	Description
1	0207WHL.asm	2	GUIDE WHEEL
2	2540BLT.par	4	3/8" X 1 1/4" BOLT
3	2562BLT.par	8	1/2" X 1 1/2" BOLT
4	25674BLT.par	2	GREASE BOLT KIT (NUT)
5	25674BLT.par	2	GREASE BOLT KIT (BOLT)
6	2568BLT.par	8	1/2" X 3 1/2" BOLT
7	2727NUT.par	4	3/8" LOCKNUT
8	2732NUT.par	8	1/2" STANDARD NUT
9	2734NUT.par	16	1/2" LOCKNUT
10	2820IWAS.par	8	3/8" HARDENED FLAT WASHER
11	2830WAS.par	4	1/2" WASHER
12	2831WAS.par	12	7/8"OD X 1/2"ID WASHER 10GA.
13	MFA0635.par	1	POINTER
14	MFA06420.par	4	2" FEED BAR CLAMP
15	MFA0654.par	2	HOLE SPACING BRACKET SR GANG
16	MNF0514.par	1	STANDARD 2 GANG FRAME
17	MOB0910.par	1	GUIDE WHEEL BRACKET LEFT
18	MOB0911.par	1	GUIDE WHEEL BRACKET RIGHT
19	MOB0913.par	1	RIGHT GUIDE WHEEL PLATE (MODEL 200)
20	MOB0914.par	1	LEFT GUIDE WHEEL PLATE (MODEL 200)
21	SRSI6334.par	2	FEED BAR
22	SRUI318.par	2	OUTSIDE TOOL BAR

FNG8112-20

CONTROL PANEL ASSEMBLY

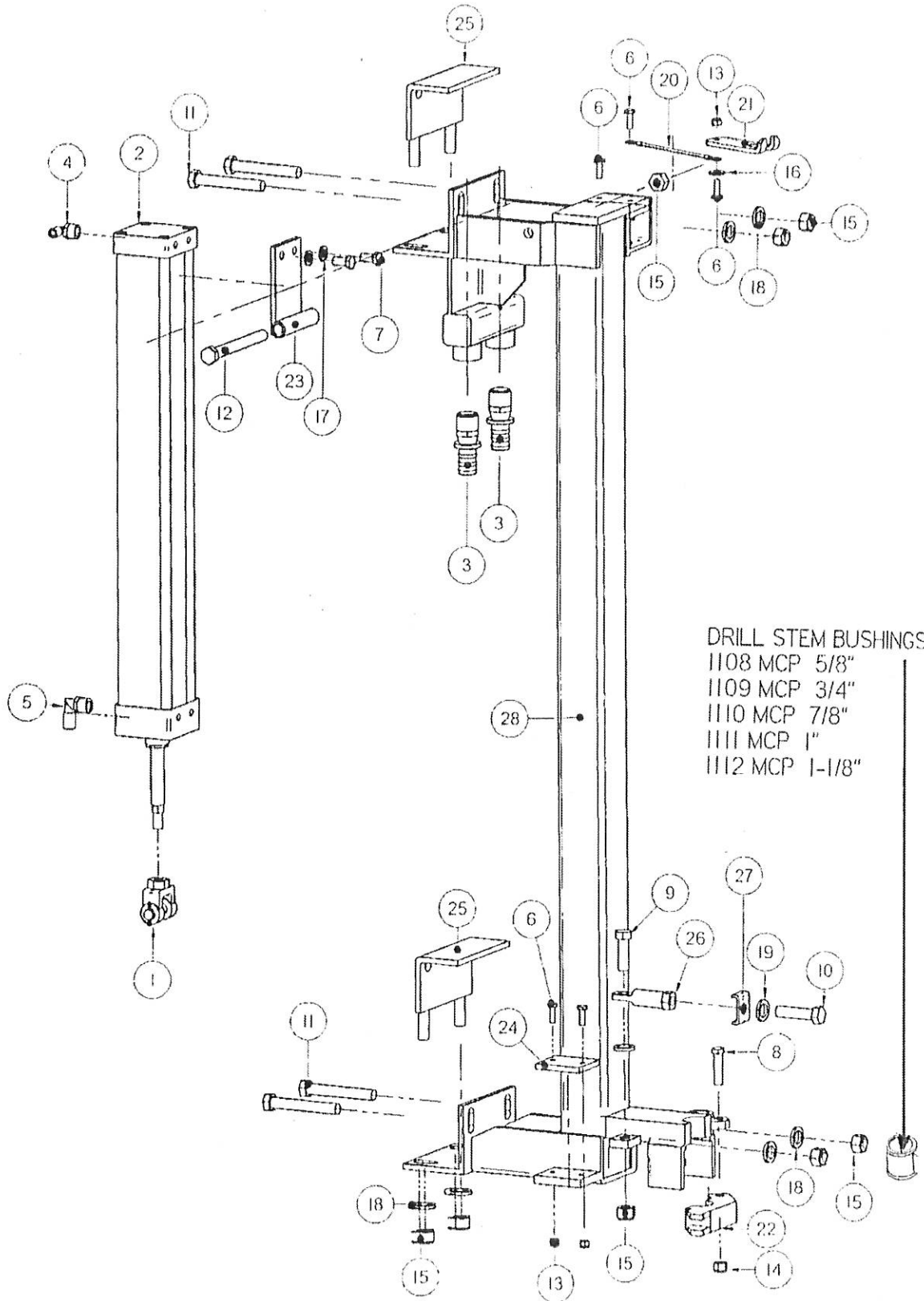


FNG8112-30

CONTROL PANEL ASSEMBLY

Item Number	File Name	Quantity	Description
1	17415rpt.par	2	BALL VALVE HANDLE
2	2050fit.par	9	1/4" TO 1/8" 90 DEG. FITTING
3	2051fit.par	10	1/4" TO 1/4" 90 DEG. FITTING
4	0615val.par	2	3/4" BRASS BALL VALVE
5	06095val.par	1	TOGGLE SWITCH
6	1601oil.par	2	3/4" PINT OILER
7	1001brv.par	2	1/8" BREATHER VENT
8	09022gau.par	2	GAUGE 0-60 1/8" MPT
9	mfa0677.par	2	MANIFOLD
10	060102val.par	2	3 WAY POSITION VALVE WITH KNOB
11	srul3460.psm	2	VALVE SPACER
12	081010REG.par	2	REGULATOR WITH LOCK RING
13	1828gro.par	1	RED BOOT FOR 06095VAL
14	17060RPT.par	2	REGULATOR LOCK RING
15	174201rpt.par	2	KNOB
16	2114pft.par	2	3/4" X 1 1/2" NIPPLE
17	2035fit.par	1	1/4" X 1/4" MALE RUN T
18	27694nut.par	2	7/16" JAM NUT
19	2150pft.par	2	3/4" 90 PIPE FITTING
20	20751fit.par	2	1/8" X 1/8" 90 DEG. SWIVEL
21	1999fit.par	2	3/4" X 3/4" HOSE SWIVEL
22	2067fit.par	1	1/4" TO 1/4" MALE CONNECTOR
23	2519blt.par	8	5/16" X 3/4" BOLT
24	2719nut.par	12	5/16" NYLON LOCK NUT
25	2712nut.par	6	8/32" NYLON LOCK NUT
26	2478blt.par	6	8/32" X 1 1/2" BOLT
27	2520blt.par	4	5/16" X 1" BOLT

FEED BAR ASSEMBLY



FNC8112-40

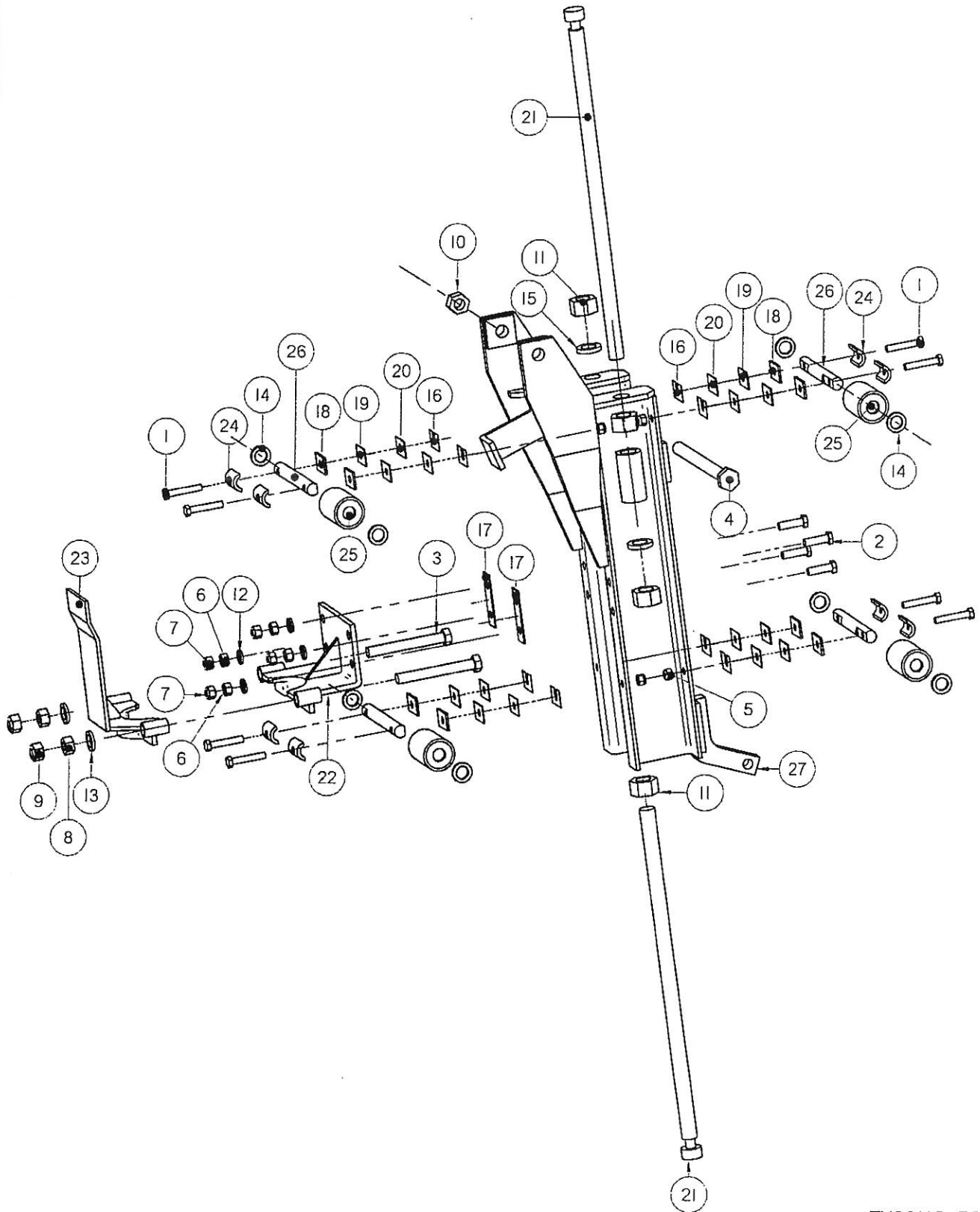
FEED BAR ASSEMBLY

Item Number	File Name	Quantity	Description
1	0501CYL.asm	1	CLEVIS WITH PIN FOR 5/8" ROD
2 *	05140CYL.asm *	1	2.5" X 20" FEED CYLINDER *
3*	1999FIT.par	2	3/4" X 3/4" HOSE SWIVEL
4	2052FIT.par	1	1/4" TO 3/8" 90 DEG. FITTING
5	2054FIT.par	1	3/8" X 3/8" 90 DEG. FITTING
6	2501BLT.par	5	1/4" X 3/4" BOLT
7*	2537BLT.par	2	3/8" X 3/4" BOLT
8	2541BLT.par	1	3/8" X 1 1/2" BOLT
9	2562BLT.par	1	1/2" X 1 1/2" BOLT
10	2563BLT.par	1	1/2" X 2" BOLT
11	2568BLT.par	4	1/2" X 3 1/2" BOLT
12*	2575BLT.par	1	1/2" X 5" BOLT
13	2716NUT.par	4	1/4" NYLON LOCK NUT
14	2727NUT.par	1	3/8" LOCKNUT
15	2734NUT.par	10	1/2" LOCKNUT
16	2801WAS.par	1	1/4" FLAT WASHER
17	2821WAS.par	2	3/8" LOCK WASHER
18	2831WAS.par	9	7/8"OD X 1/2"ID WASHER 10GA.
19	2832WAS.par	1	1/2" WASHER
20	3030PIN.par	1	6" LANYARD WITH LOOPS
21*	CRA0218.par	1	CARRIAGE LOCK
22	MFA0609.par	1	BIT GUIDE
23*	MFA0625.par	1	FEED CYLINDER MOUNT BRACKET
24*	MFA0626.par	2	STOP PAD
25	MFA06420.par	2	2" FEED BAR CLAMP
26	MFA0674.par	1	SWIVEL BOLT
27*	MFA0690.par	1	BIT GUIDE KEEPER
28*	SRS16334.par	1	FEED BAR

* After s/n U-3412, use 05141 CYL

FNG8112-40

CARRIAGE ASSEMBLY



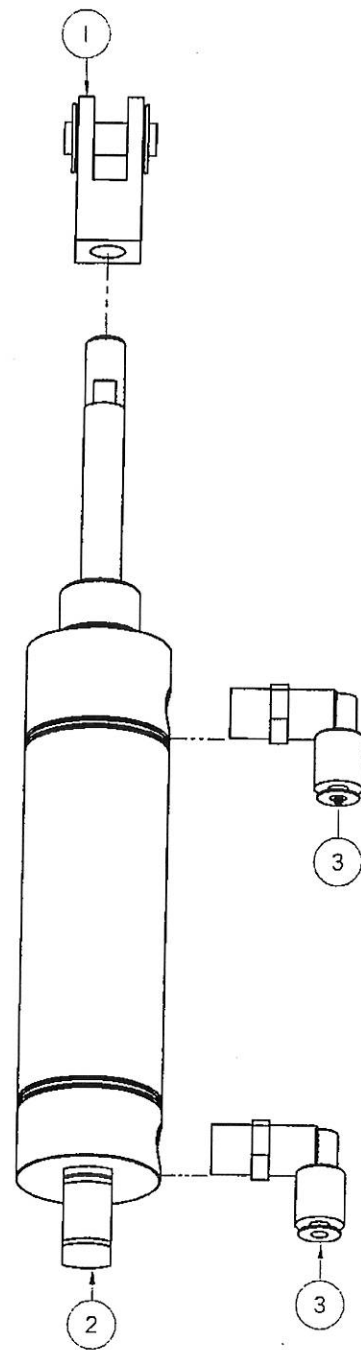
FNG8112-50

CARRIAGE ASSEMBLY

Item Number	File Name	Quantity	Description
1*	2526BLT	8	5/16" X 1-1/2" BOLT
2	2540BLT.par	4	3/8" X 1 1/4" BOLT
3	2570BLT.par	2	1/2" X 4" BOLT
4*	2590BLT.par	1	5/8" X 8" BOLT
5*	2719NUT.par	4	5/16" NYLON LOCK NUT
6	2725NUT.par	4	3/8" STANDARD NUT
7	2727NUT.par	4	3/8" LOCKNUT
8*	2732NUT.par	2	1/2" STANDARD NUT
9*	2734NUT.par	2	1/2" LOCKNUT
10	2742NUT.par	1	5/8" LOCKNUT
11	27490NUT.par	4	3/4" COIL ROD NUT
12	2821WAS.par	4	3/8" LOCK WASHER
13	2832WAS.par	2	1/2" WASHER
14	2841WAS.par	8	5/16" WASHER
15	2852WAS.par	2	3/4" LOCK WASHER
16*	7009TAB.par	8	STAINLESS STEEL SHIM (AS NEEDED)
17*	7010TAB.par	2	16 GA. TWO HOLE SHIM
18*	7011TAB.par	8	12 GA. SHIM (AS NEEDED)
19*	7012TAB.par	8	18 GA. SHIM (AS NEEDED)
20*	7013TAB.par	8	22 GA. SHIM (AS NEEDED)
21	Cra02030.Par	2	18" STOP ROD
22	CRA0214.par	1	UPPER DRILL BRACKET
23*	CRA0216.par	1	LOWER DRILL BRACKET
24	CRA0230.par	8	BEARING KEEPER
25*	CRA0233.par	4	ROLLER BEARING DRUM
26	CRA0234.par	4	ROLLER BEARING AXLE
27	CRG01041.par	1	CARRIAGE

FNG8112-50

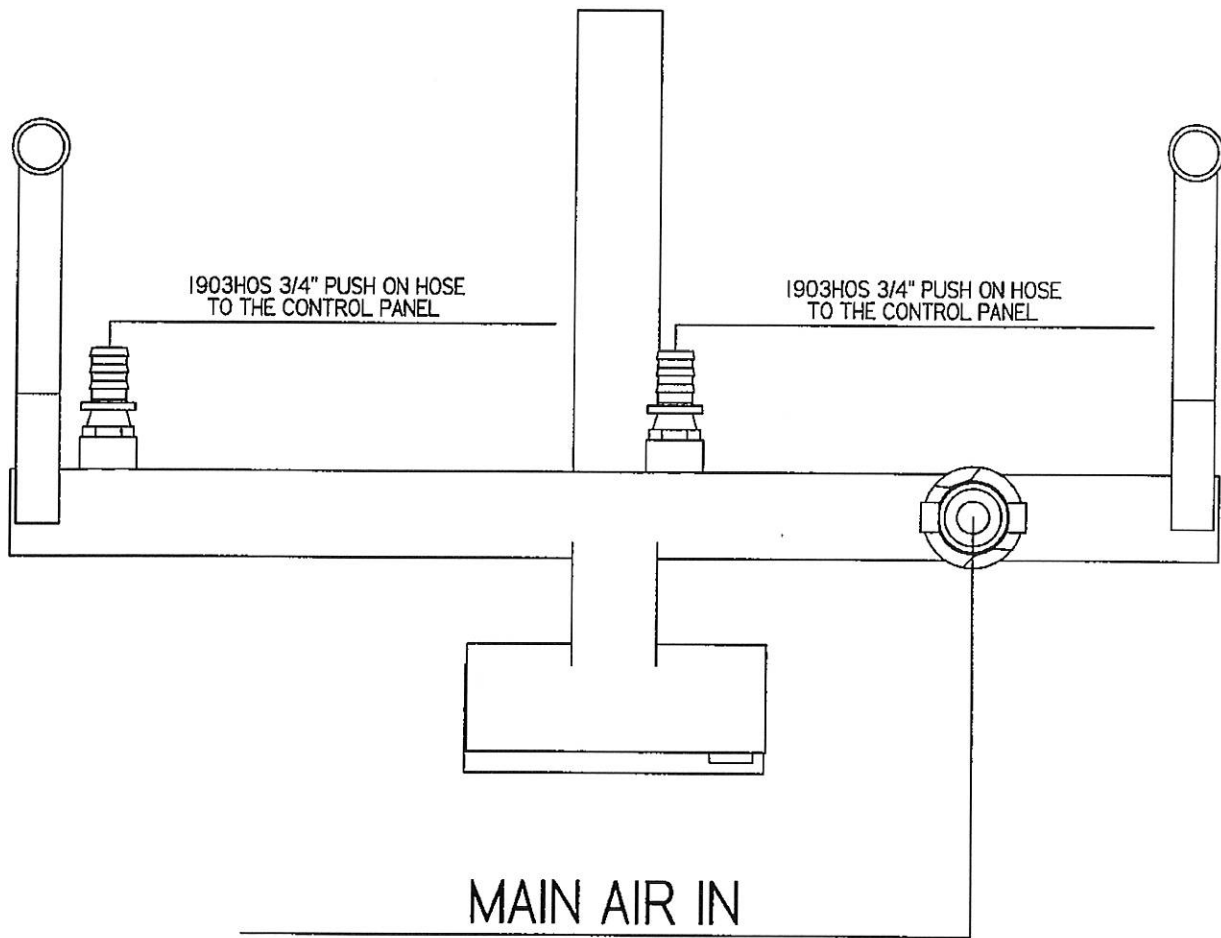
BRAKE CYLINDER ASSEMBLY



Item Number	File Name	Quantity	Description
1	05000CYL.asm	1	CYLINDER CLEVIS
2	05043CYL.par	1	BRAKE CYLINDER
3	2075IFIT.par	2	1/8" X 1/8" 90 DEG. SWIVEL

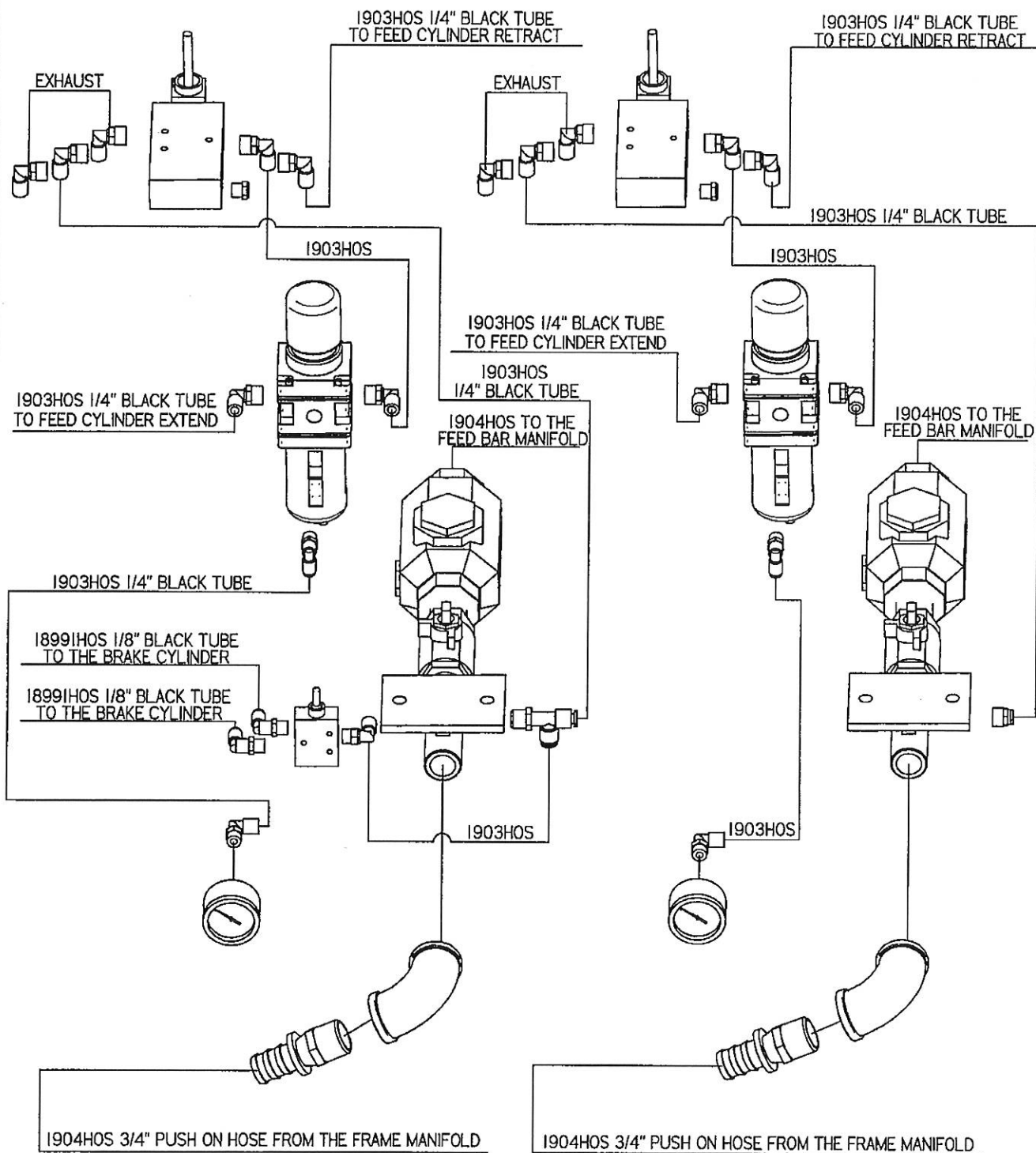
FNG8112-60

FRAME MANIFOLD SCHEMATIC



FNG8112-70

CONTROL PANEL SCHEMATIC



FNG8112-80

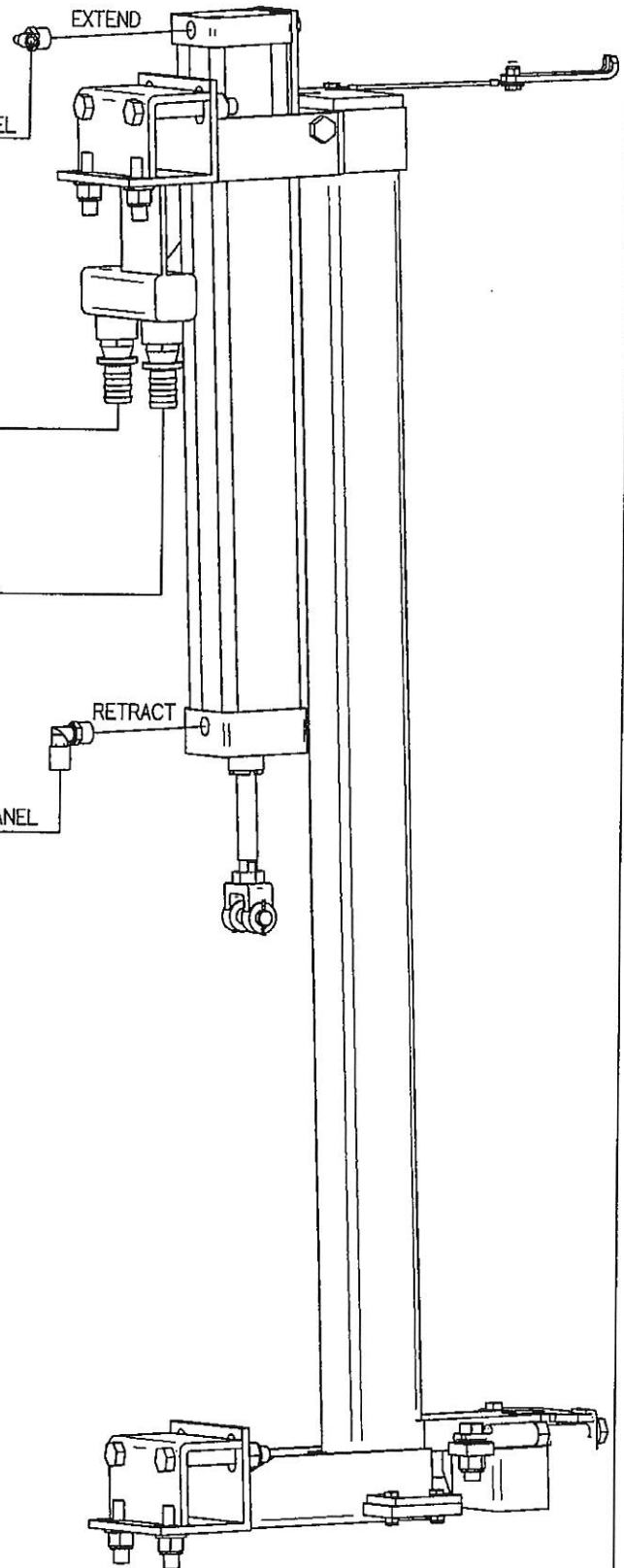
FEED BAR SCHEMATIC

1903HOS 1/4" BLACK TUBE FROM THE 0809REG ON THE CONTROL PANEL

HOS1501 HOSE ASSEMBLY TO THE DRILL MOTOR

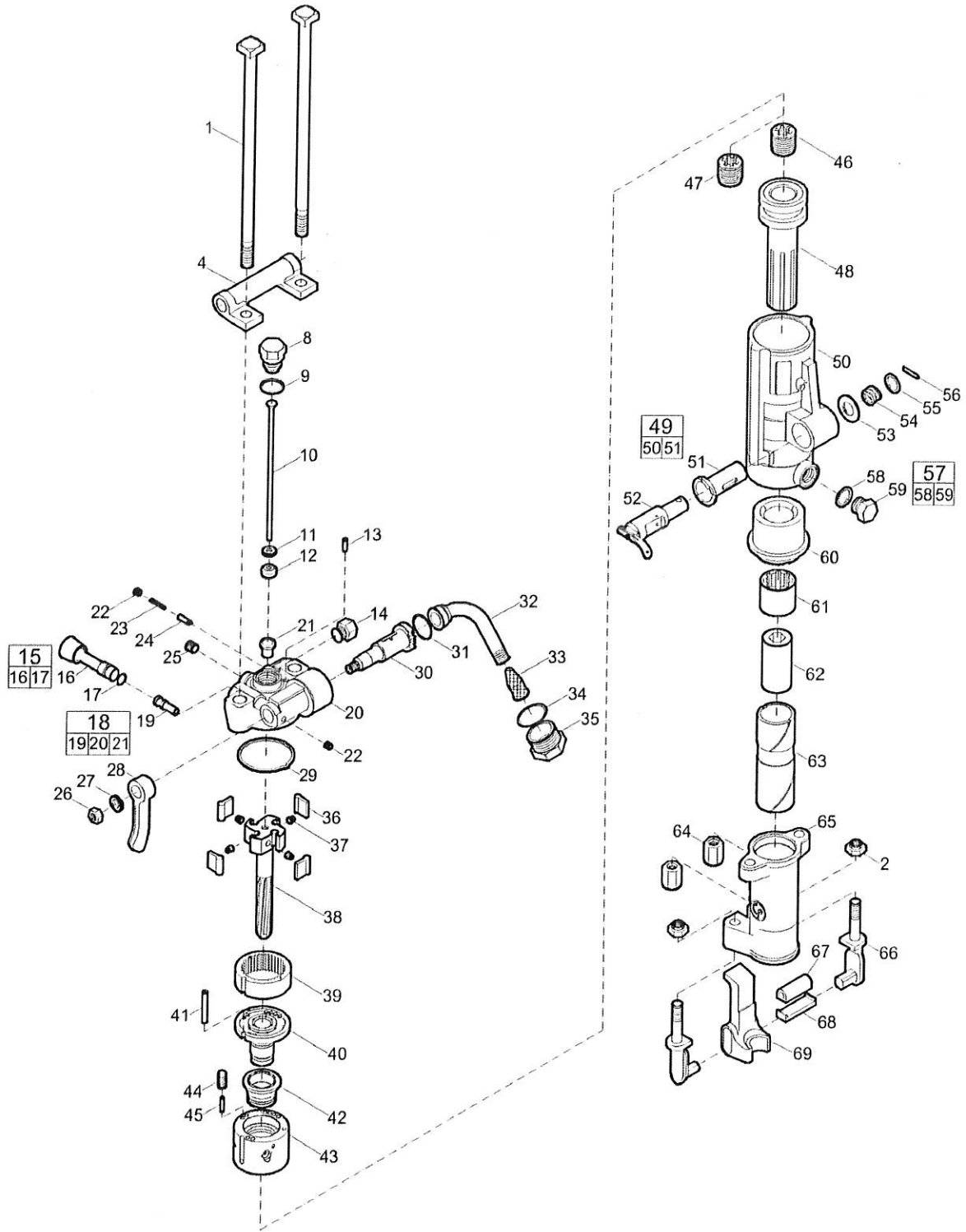
1904HOS 3/4" PUSH ON HOSE FROM THE CONTROL PANEL

1903HOS 1/4" BLACK TUBE FROM THE 060102VAL ON THE CONTROL PANEL



FNG8112-90

Spare parts list CP 0032 A 7/8" x 3 1/4"



Refer to the Parts Online web page for most up-to-date information. The printed information might be outdated.

Item	Part No.	Name	Qty	L
1	R086623	Bolt - Thru	2	
2	R005742	Nut - Elastic stop	Z	A
4	R086608	Bracket - Handle	1	
8	R076793	Plug - Air tube	1	
9	R000537	Gasket - Tube plug	2	
10	R077184	Tube - Air	1	
11	R075449	Washer - Air tube	1	
12	R075099	Rubber - Air tube	1	
13	R075802	Pin - Valve plunger	1	
14	R076372	Plug - Water valve	1	
15	R079130	Water valve port plug, complete	1	
16	-	Water valve port plug	1	
17	C079489	O-ring	1	
18	R087948	Backhead, complete	1	
19	R098054	Bushing - Water valve	1	
20	-	Backhead	1	
21	R137738	Bushing - Blow tube	1	
22	C068064	Plug - Pipe	2	
23	R085671	Spring - Valve plunger	1	
24	R086627	Plunger - Throttle valve	1	
25	C068799	Plug - pipe, Ø 1/4 in., Ø 6.5 mm	1	C
26	P002149	Nut - Hexagon	1	D
27	C036717	Lockwasher - Head latch	1	E
28	R079124	Handle - Throttle valve	1	
29	H0979432	Gasket	1	
30	R086628	Valve - Throttle	1	
31	P103521	O-ring	1	
32	R075265	Swivel - Air inlet	1	
33	R005584	Screen - Air inlet	1	
34	R110317	O-ring	1	
35	R000530	Air swivel nut	1	
36	R075267	Pawl	4	
37	R086654	Spring - Pawl	4	
38	R086622	Bar - Rifle	1	

Refer to the Parts Online web page for most up-to-date information. The printed information might be outdated.

Item	Part No.	Name	Qty	L
39	R076194	Ring - Ratchet	1	
40	R098085	Bushing - Valve guide	1	
41	R075772	Pin - Valve case dowel	1	
42	R076263	Valve	1	
43	R076264	Case - Valve	1	
44	R098084	Plug - Oil regulating	1	
45	R085625	Stem - Oil regulating	1	
46	R075839	Nut - Rifle bar	1	F
47	R075826	Nut - Rifle bar	1	G
48	R000088	Piston	1	
49	R087990	Cylinder, complete	1	
50	--	Cylinder	1	
51	R086611	Bushing - Blower valve	1	
52	R086612	Valve - Blower	1	
53	R075777	Washer - Blower valve	1	
54	R075778	Spring - Blower valve	1	
55	R075780	Washer - Valve spring	1	
56	R076266	Pin - Spring	1	
57	R085611	Oil plug, complete	1	
58	R091176	Gasket - Oil plug	1	
59	--	Oil plug	1	
60	R042161	Bushing - Cylinder	1	
61	R086733	Nut - Chuck rotation	1	
62	R099374	Chuck, 7/8" x 31/4" (22 x 82.5 mm)	1	
63	R041321	Sleeve - Chuck, 7/8" x 31/4" (22 x 82.5 mm)	1	
64	R085756	Nut - Thru bolt	2	
65	R041320	Fronthead, 7/8" x 31/4" (22 x 82.5 mm)	1	
66	R093896	Tunnion - Retainer	2	
67	R093897	Buffer - Retainer	1	
68	R093898	Retainer - Latch shoe	1	
69	R093913	Retainer, 7/8" (22 mm)	1	

Comments for Page: CP 0032 A 7/8" x 3 1/4"

(L)OCAL REMARKS

A | 5/8" - 11

B | 1/8"

C | 1/4"

Refer to the Parts Online web page for most up-to-date information. The printed information might be outdated.