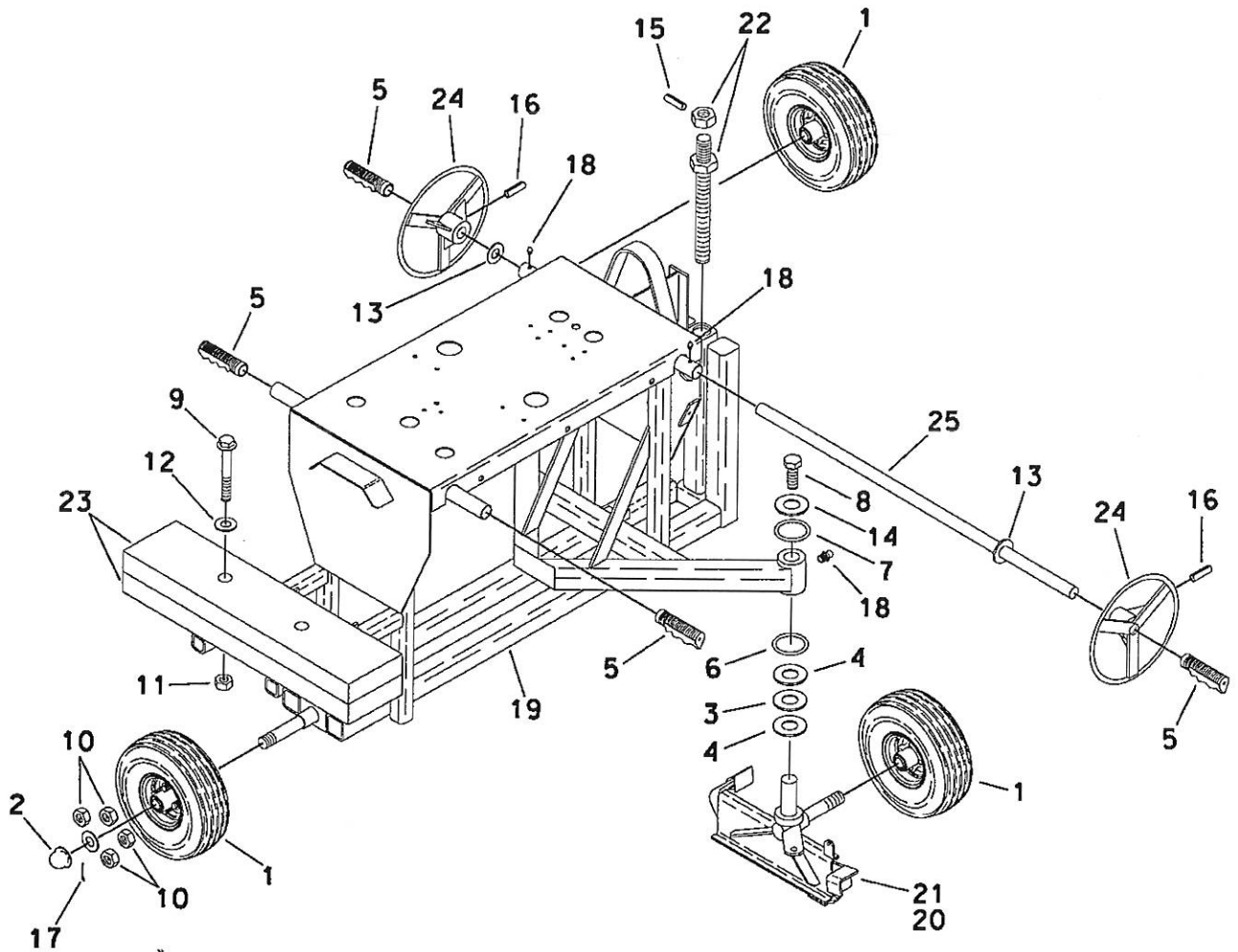


# MAIN FRAME ASSEMBLY

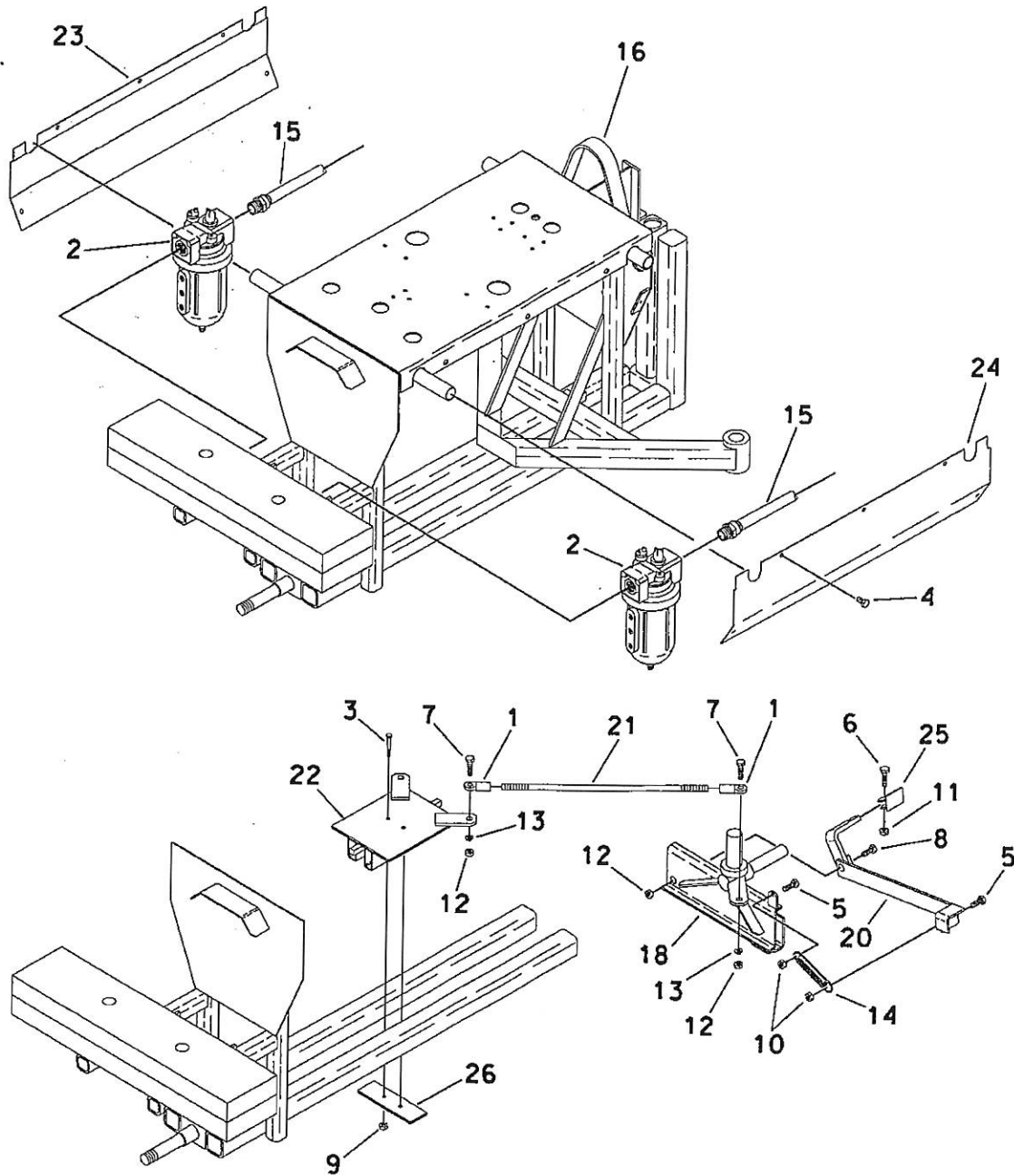


FNG8143-10

## MAIN FRAME ASSEMBLY

ITEM	PART NO	QTY	DESCRIPTION
1.	0204WHL	3	WHEEL
2.	0252WHL	3	DUST CAP
3.	0405BRG	2	THRUST BEARING
4.	04050BRG	4	WASHER THRUST BEARING
5.	1820GRO	4	HANDLE GRIP
6.	1830GRO	2	O-RING (2" X 1/8")
7.	18301GRO	2	O-RING (1-1/4" X 1/16")
8.	2526BLT	2	BOLT (5/16" X 1-1/2")
9.	2578BLT	2	BOLT (1/2" X 6-1/2")
10.	2733NUT	12	LUG NUT (1/2")
11.	2734NUT	2	NI LK NUT (1/2")
12.	2832WAS	2	WASHER (1/2")
13.	2860WAS	2	WASHER (1")
14.	2864WAS	2	WASHER (3/8")
15.	3006PIN	1	ROLL PIN (3/8" X 1-1/2")
16.	30102PIN	2	ROLL PIN (1/4" X 1-1/2")
17.	3022PIN	3	COTTER PIN (1/8")
18.	9501MIS	4	ZERT
19.	MNF0515	1	MAIN FRAME
20.	MOB0930	1	SPINDLE W/BRAKE LEFT (NOT SHOWN)
21.	MOB0931	1	SPINDLE W/BRAKE RIGHT
22.	SRU1301	1	SCREW JACK ASSEMBLY
23.	SRU1305	2	WEIGHT
24.	SRU1306	2	STEERING WHEEL
25.	SRU1307	1	STEERING WHEEL SHAFT

# COVERS AND BRAKES

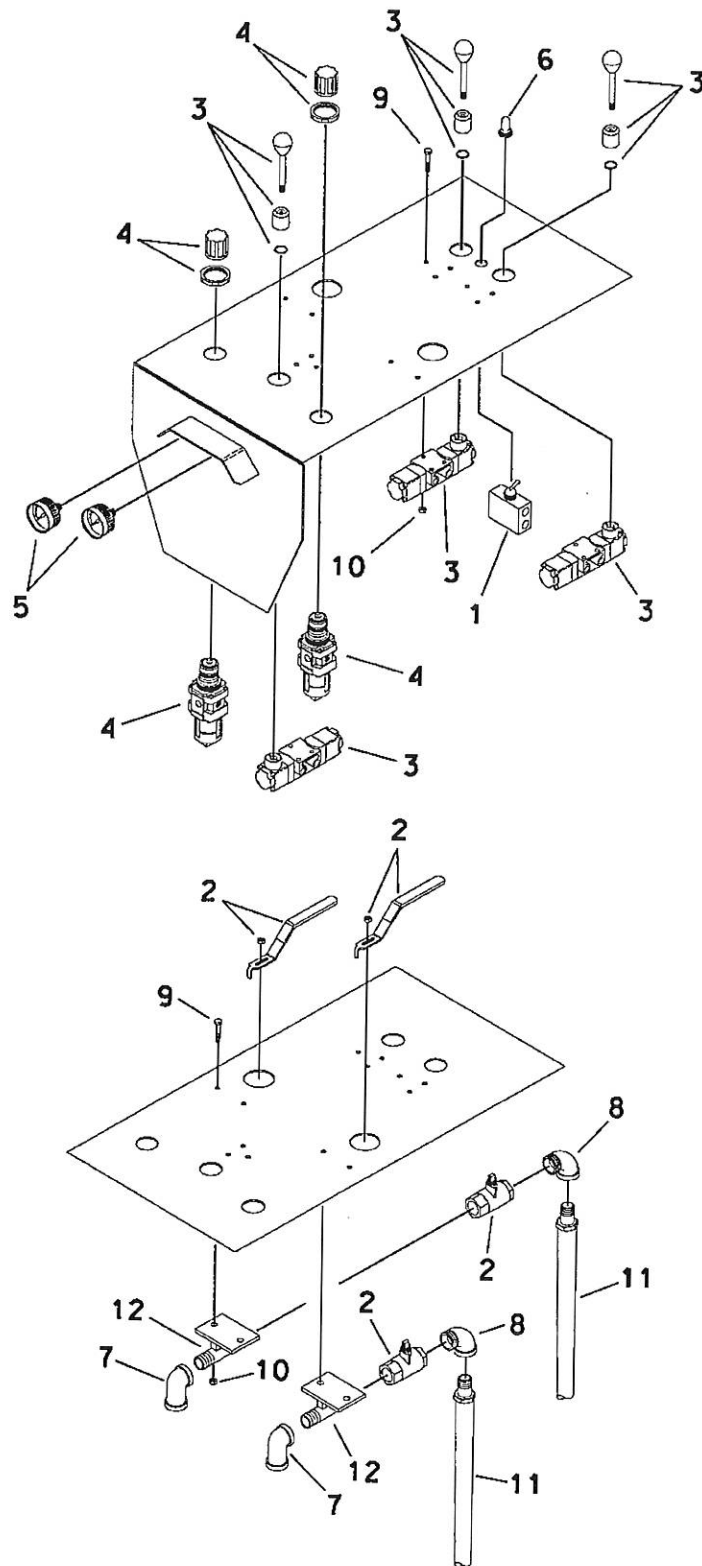


FNG8143-20

## COVERS AND BRAKES

ITEM	PART NO	QTY	DESCRIPTION
1.	04015BRG	4	ROD END BRG (1/2")
2.	1605OIL	2	OILER (3/4" - LARGE CAPACITY)
	1753RPT	2	CAP AND O-RING
	17531RPT	2	SIGHT DOME KIT
3.	2510BLT	2	BOLT (1/4" X 3")
4.	2519BLT	10	BOLT (5/16" X 3/4")
5.	2523BLT	2	BOLT (5/16" X 1-1/4")
6.	2541BLT	2	BOLT (3/8" X 1-1/2")
7.	2563BLT	4	BOLT (1/2" X 2")
8.	2564BLT	2	BOLT (1/2" X 2-1/2")
9.	2716NUT	2	LOCKNUT (1/4")
10.	2719NUT	2	LOCKNUT (5/16")
11.	2727NUT	2	LOCKNUT (3/8")
12.	2734NUT	6	LOCKNUT (1/2")
13.	2831WAS	4	WASHER (1/2")
14.	90030MIS	2	BRAKE RETURN SPRING
15.	HOS1504	2	HOSE, OILER TO MANIFOLD
16.	MNF0515	1	MAIN FRAME
17.	MOB0930	1	SPINDLE W/BRAKE LEFT (NOT SHOWN)
18.	MOB0931	1	SPINDLE W/BRAKE RIGHT
19.	MOB0932	1	BRAKE LEVER LEFT (NOT SHOWN)
20.	MOB0933	1	BRAKE LEVER RIGHT
21.	SRU1303	2	STEERING LINK
22.	SRU1304	1	STEERING SLIDE
23.	SRU1308	1	SIDE COVER LEFT
24.	SRU1309	1	SIDE COVER RIGHT
25.	SRU1322	2	BRAKE SHOE 210-2
26.	SRU1327	1	SLIDE RETAINER

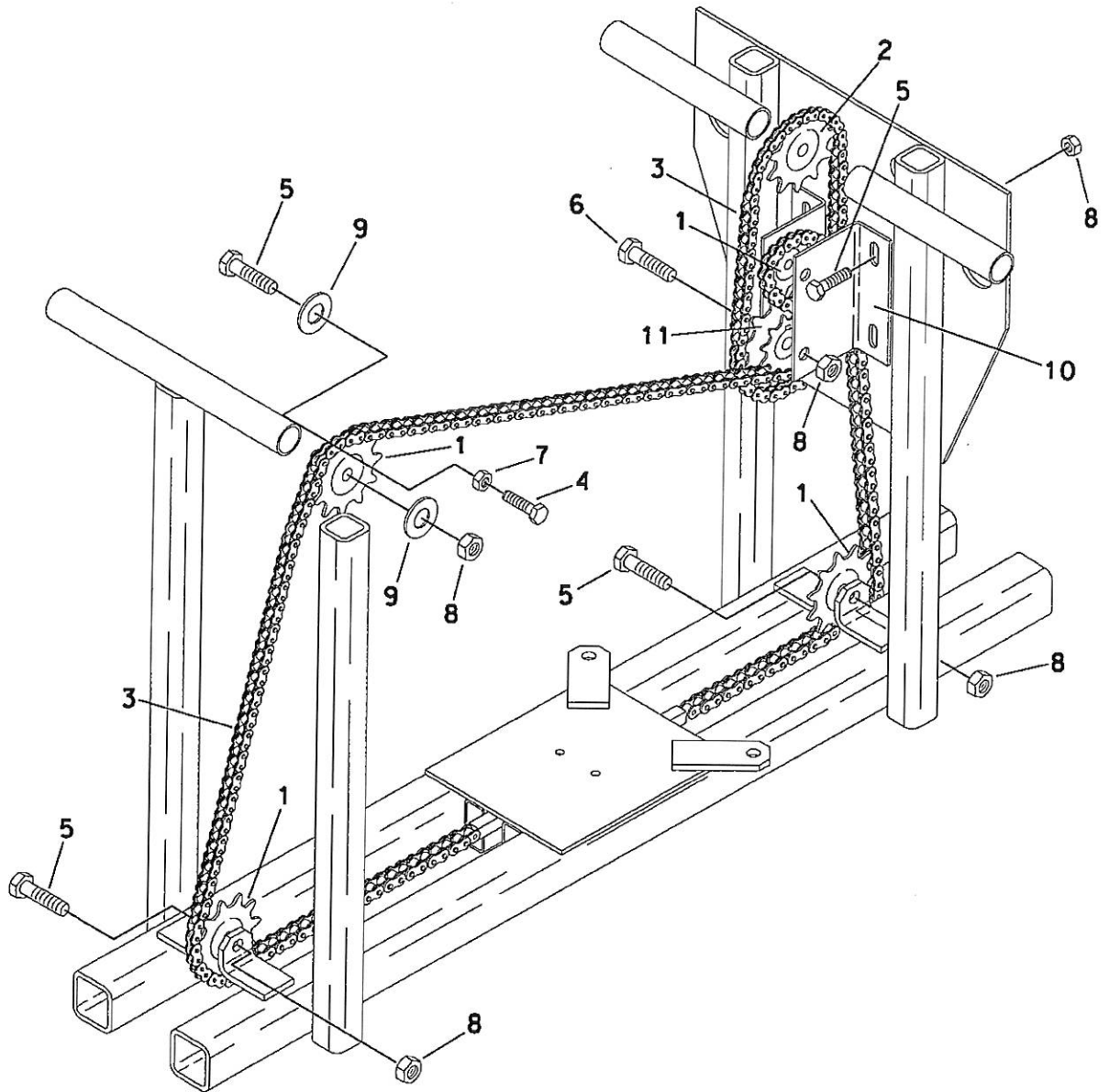
# CONTROL PANEL



## CONTROL PANEL

ITEM	PART NO	QTY	DESCRIPTION
1.	06095VAL	1	TOGGLE SWITCH (AUTO ALIGN)
2.	0615VAL	2	POWER VALVE
	17415RPT	2	HANDLE
	36261MIS	2	JAM NUT
3.	06165VAL	3	FEED VALVE
	17408RPT	3	HANDLE
	17409RPT	3	KNOB
4.	0809REG	2	REGULATOR
5.	09022GAU	2	AIR PRESSURE GAUGE
6.	1828GRO	1	SWITCH BOOT
7.	2150PFT	2	PIPE FITTING (3/4")
8.	2155PFT	2	PIPE FITTING (ELL 3/4")
9.	2503BLT	13	BOLT (1/4" X 1")
10.	2716NUT	13	LOCKNUT (1/4")
11.	HOS1503	2	CONTROL PANEL TO FEED BAR
12.	SRU1312	2	MANIFOLD

# STEERING



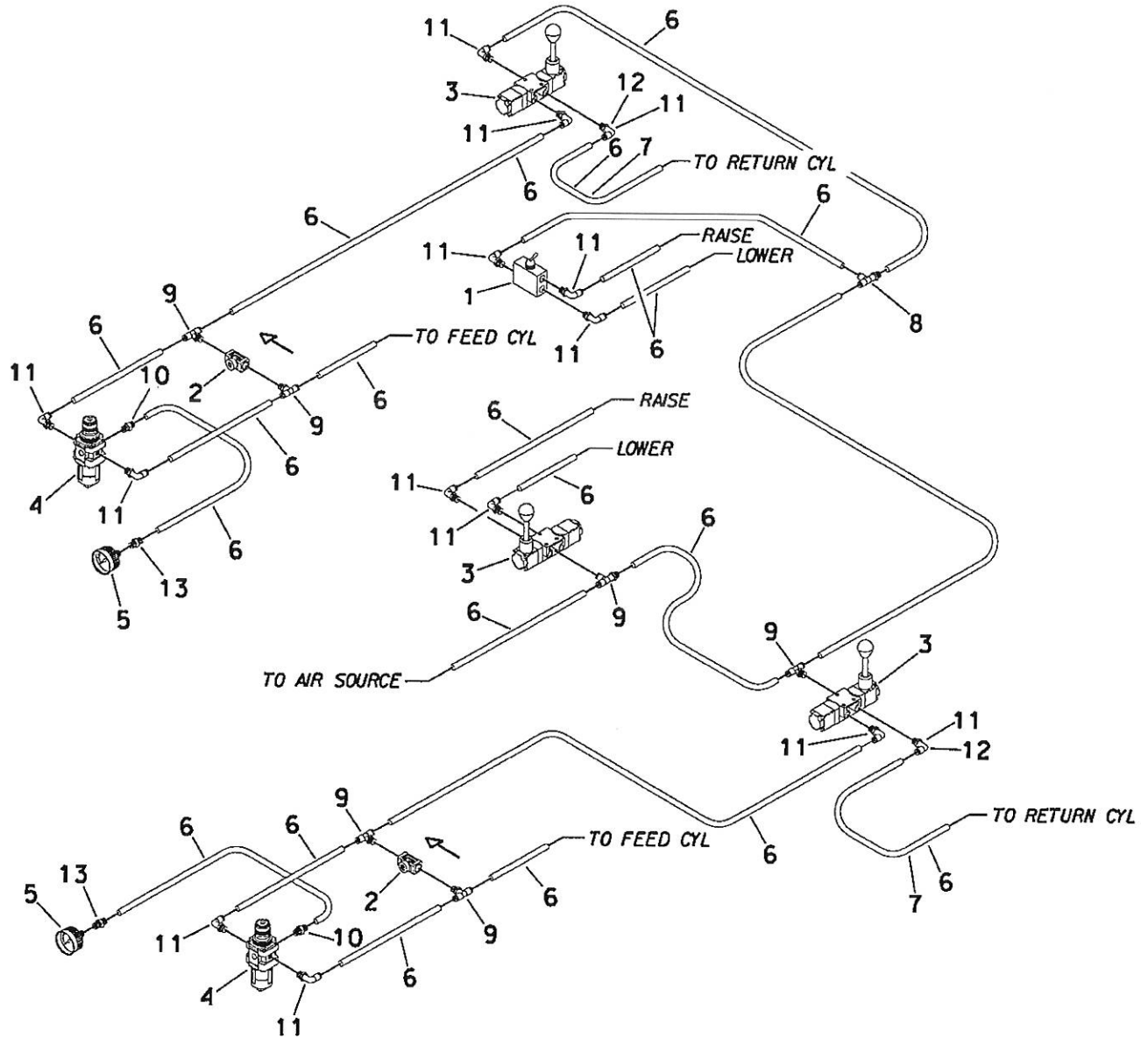
FNG8143-40

## STEERING

ITEM	PART NO	QTY	DESCRIPTION
1.	15151GBX	4	SPROCKET
2.	15218GBX	1	SPROCKET (12T 1")
3.	1534GBX	1	CHAIN (#40)
4.	25301BLT	1	TAP BOLT (5/16" X 2")
5.	2563BLT	7	BOLT (1/2" X 2")
6.	2564BLT	2	BOLT (1/2" X 2-1/2")
7.	2717NUT	1	NUT (5/16")
8.	2734NUT	5	LOCKNUT (1/2")
9.	2831WAS	7	WASHER (1/2")
10.	SRU1313	1	CHAIN TIGHTENER
11.	SRU1330	1	SPROCKET, TRANSMISSION GEAR



# AIR LINE SCHEMATIC

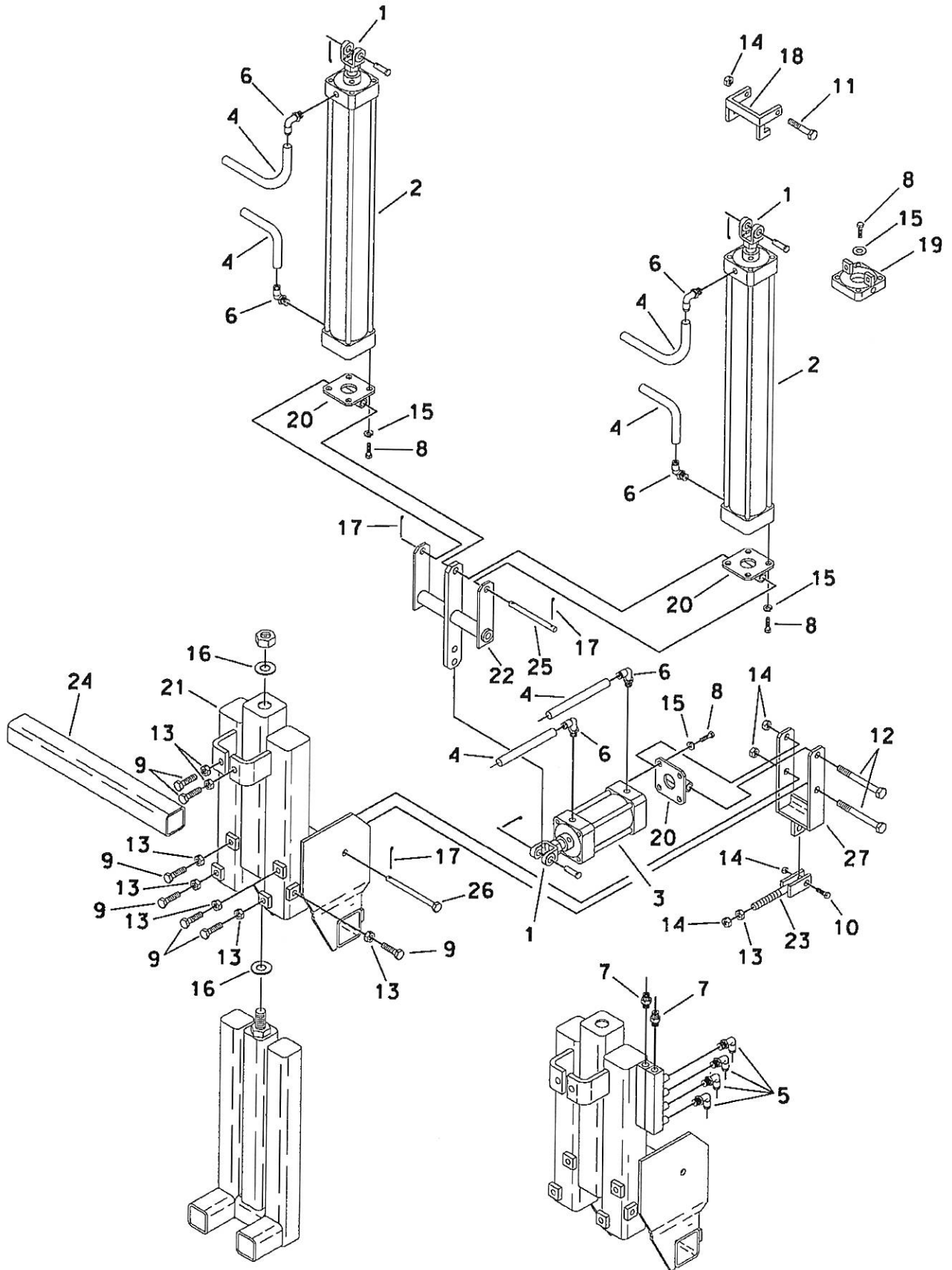


FNG8143-50

## AIR LINE SCHEMATIC

ITEM	PART NO	QTY	DESCRIPTION
1.	06095VAL	1	VALVE, AUTO ALIGN (AFTER SN G 713)
2.	0614VAL	2	CHECK VALVE
3.	06165VAL	3	FEED VALVE
4.	0809REG	2	REGULATOR
5.	09022GAU	2	AIR PRESURE GAUGE
6.	1903HOS	*	AIR HOSE (1/4")(* VAR LENGTHS)
7.	1905HOS	*	3/8" HOSE (AFTER SN G 724)
8.	2040FIT	1	AIR FITTING
9.	2041FIT	6	AIR FITTING
10.	2050FIT	2	AIR FITTING
11.	2051FIT	13	AIR FITTING
12.	2053FIT	2	AIR FITTING (AFTER SN G 724)
13.	2067FIT	2	AIR FITTING

# ADJUSTING LEG ASSEMBLY - 12"

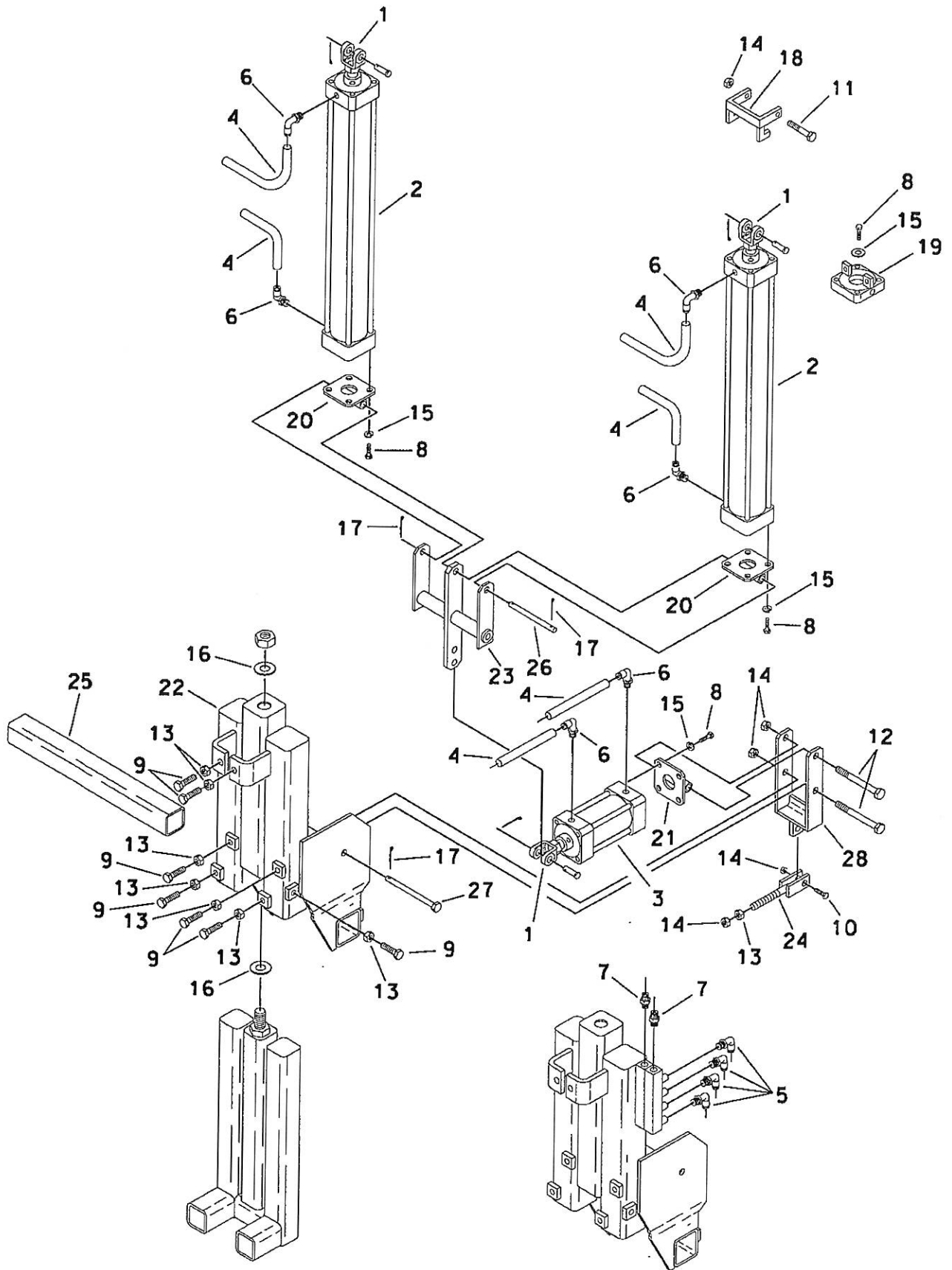


FNG8143-60

# ADJUSTING LEG ASSEMBLY - 12"

ITEM	PART NO	QTY	DESCRIPTION
1.	0501CYL	3	CLEVIS (W/ BELOW LISTED)
	3002PIN	1	CLEVIS PIN (1/2" X 1-1/2")
	3022PIN	1	COTTER PIN (1/8" X 1")
2.	0520CYL	2	LIFT CYLINDER
	1719ORPT	1	SEAL KIT (2-1/2" BORE SMC CYL)
3.	05210CYL	1	AUTO ALIGN CYLINDER
4.	1903HOS	*	TUBING (1/4")(* VARIED LENGTHS)
5.	2051FIT	4	AIR FITTING (1/4" TO 1/4" 90)
6.	2052FIT	6	AIR FITTING (1/4" X 3/8" 90)
7.	2067FIT	2	AIR FITTING (1/4" CONNECTOR)
8.	2516BLT	4	FINE BOLT (5/16" X 3/4")
9.	2560BLT	7	BOLT (1/2" X 1-1/4")
10.	2563BLT	1	BOLT (1/2" X 2")
11.	2567BLT	1	BOLT (1/2" X 3")
12.	2572BLT	2	BOLT (1/2" X 4-1/2")
13.	2732NUT	8	STD NUT (1/2")
14.	2734NUT	5	LOCKNUT (1/2")
15.	2810WAS	16	LOCK WASHER (5/16")
16.	2860WAS	2	WASHER (1")
17.	3022PIN	3	COTTER PIN (1/8" X 1")
18.	MFA0672	1	CYLINDER LOCK CLEVIS
19.	MFA0673	1	CYLINDER LOCK
20.	SRG1120	3	REAR CYLINDER BRACKET
21.	SRU1302	1	MAST
22.	SRU1316	1	ANGLE ADJUSTER PIVOT
23.	SRU1317	1	ADJUSTABLE CLEVIS
24.	SRU1319	1	TOOL BAR INSIDE
25.	SRU1328	1	CYLINDER MOUNTING PIN
26.	SRU1329	1	PIVOT PIN
27.	SRU1331	1	AUTO ALIGN PIVOT

# ADJUSTING LEG ASSEMBLY - 18"

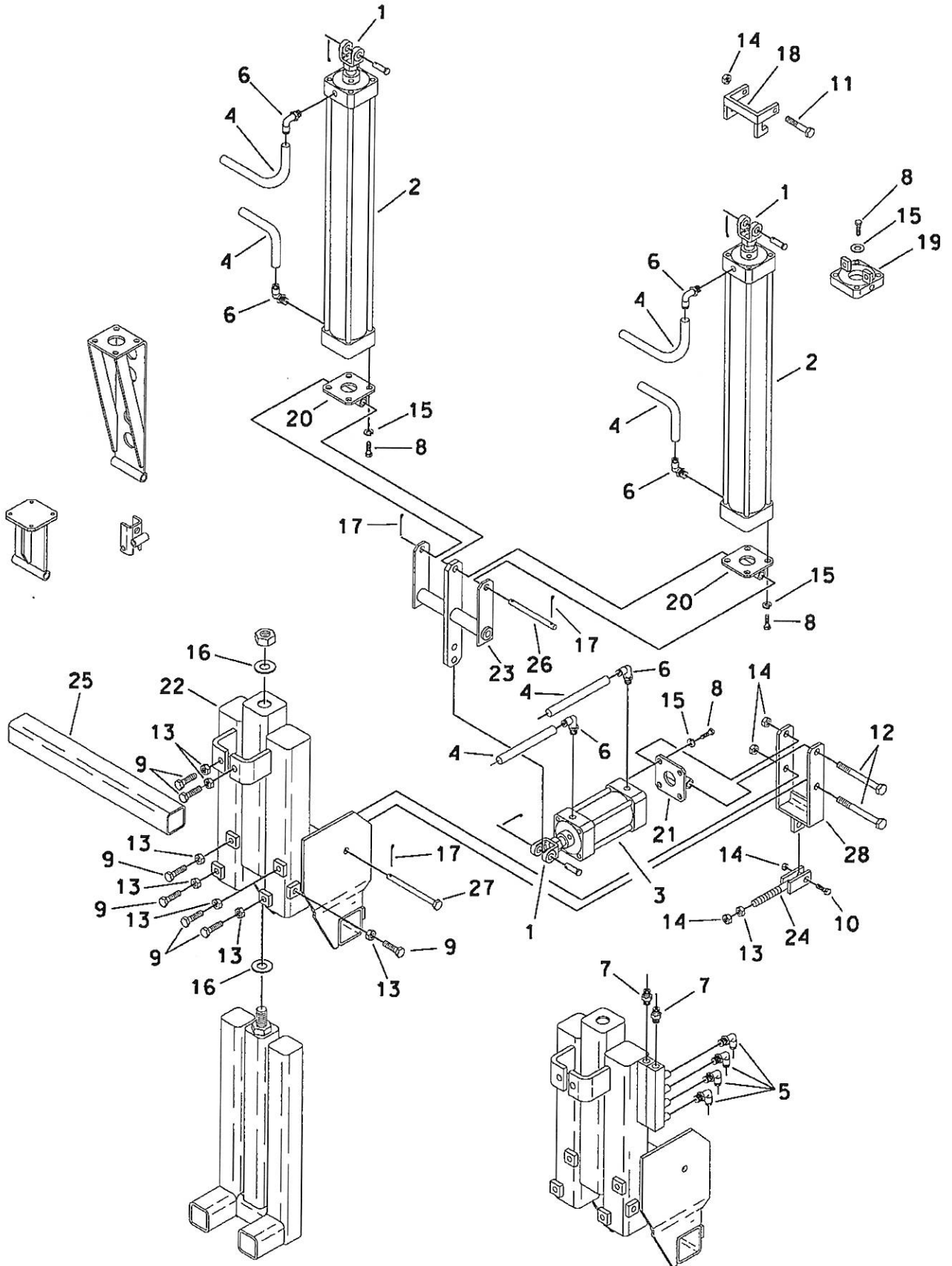


FNG8143-61

# ADJUSTING LEG ASSEMBLY - 18"

ITEM	PART NO	QTY	DESCRIPTION
1.	0501CYL	3	CLEVIS (W/ BELOW LISTED)
	3002PIN	1	CLEVIS PIN (1/2" X 1-1/2")
	3022PIN	1	COTTER PIN (1/8" X 1")
2.	0520CYL	2	LIFT CYLINDER
	1719ORPT	1	SEAL KIT (2-1/2" BORE SMC CYL)
3.	052100CYL	1	AUTO ALIGN CYLINDER (NS)
4.	1903HOS	*	TUBING (1/4")(* VARIED LENGTHS)
5.	2051FIT	4	AIR FITTING (1/4" TO 1/4" 90)
6.	2052FIT	6	AIR FITTING (1/4" X 3/8" 90)
7.	2067FIT	2	AIR FITTING (1/4" CONNECTOR)
8.	25163BLT	4	FINE BOLT (3/8" X 1")(NS)
9.	2560BLT	7	BOLT (1/2" X 1-1/4")
10.	2563BLT	1	BOLT (1/2" X 2")
11.	2567BLT	1	BOLT (1/2" X 3")
12.	2576BLT	2	BOLT (1/2" X 5-1/2")(NS)
13.	2732NUT	8	STD NUT (1/2")
14.	2734NUT	5	LOCKNUT (1/2")
15.	2810WAS	16	LOCK WASHER (5/16")
16.	2860WAS	2	WASHER (1")
17.	3022PIN	3	COTTER PIN (1/8" X 1")
18.	MFA0672	1	CYLINDER LOCK CLEVIS
19.	MFA0673	1	CYLINDER LOCK
20.	SRG1120	2	REAR CYLINDER BRACKET
21.	SRG11200	1	REAR CYLINDER BRACKET (NS)
22.	SRU1302	1	MAST
23.	SRU1316	1	ANGLE ADJUSTER PIVOT
24.	SRU1317	1	ADJUSTABLE CLEVIS
25.	SRU1319	1	TOOL BAR INSIDE
26.	SRU1328	1	CYLINDER MOUNTING PIN
27.	SRU1329	1	PIVOT PIN
28.	SRU13310	1	AUTO ALIGN PIVOT (NS)

# ADJUSTING LEG ASSEMBLY - 24"



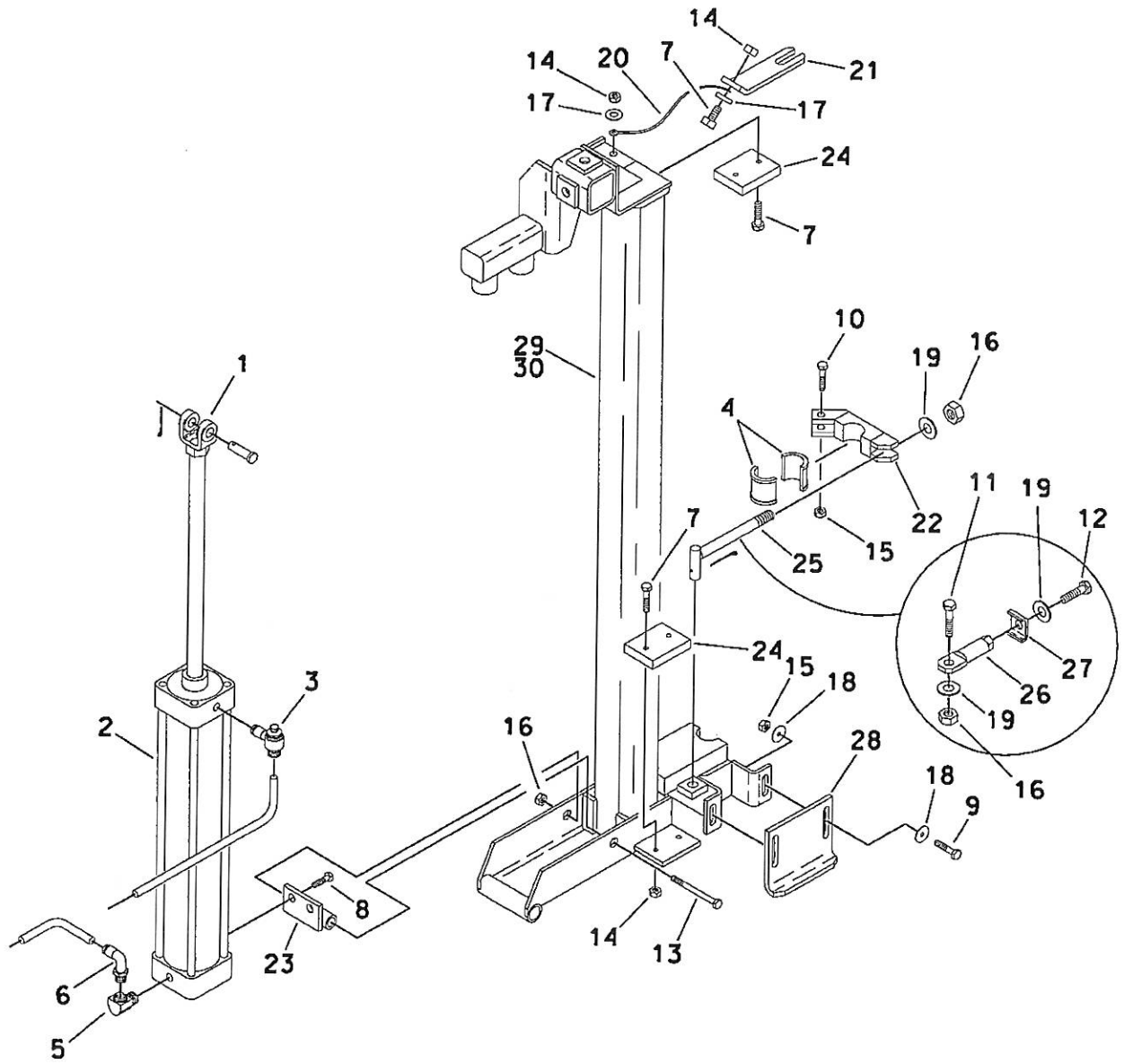
FNG8143-62

# ADJUSTING LEG ASSEMBLY - 24"

ITEM	PART NO	QTY	DESCRIPTION
1.	0501CYL	3	CLEVIS (W/ BELOW LISTED)
	3002PIN	1	CLEVIS PIN (1/2" X 1-1/2")
	3022PIN	1	COTTER PIN (1/8" X 1")
2.	0520CYL	2	LIFT CYLINDER
	1719ORPT	1	SEAL KIT (2-1/2" BORE SMC CYL)
3.	052100CYL	1	AUTO ALIGN CYLINDER (NS)
4.	1903HOS	*	TUBING (1/4")(* VARIED LENGTHS)
5.	2051FIT	4	AIR FITTING (1/4" TO 1/4" 90)
6.	2052FIT	6	AIR FITTING (1/4" X 3/8" 90)
7.	2067FIT	2	AIR FITTING (1/4" CONNECTOR)
8.	25163BLT	4	FINE BOLT (3/8" X 1")(NS)
9.	2560BLT	7	BOLT (1/2" X 1-1/4")
10.	2563BLT	1	BOLT (1/2" X 2")
11.	2567BLT	1	BOLT (1/2" X 3")
12.	2576BLT	2	BOLT (1/2" X 5-1/2")(NS)
13.	2732NUT	8	STD NUT (1/2")
14.	2734NUT	5	LOCKNUT (1/2")
15.	2810WAS	16	LOCK WASHER (5/16")
16.	2860WAS	2	WASHER (1")
17.	3022PIN	3	COTTER PIN (1/8" X 1")
18.	MFA0672	1	CYLINDER LOCK CLEVIS
19.	MFA0673	1	CYLINDER LOCK
20.	SRG1120	2	REAR CYLINDER BRACKET
21.	SRG11200	1	REAR CYLINDER BRACKET (NS)
22.	SRU1302	1	MAST
23.	SRU1316	1	ANGLE ADJUSTER PIVOT
24.	SRU1317	1	ADJUSTABLE CLEVIS
25.	SRU1319	1	TOOL BAR INSIDE
26.	SRU1328	1	CYLINDER MOUNTING PIN
27.	SRU1329	1	PIVOT PIN
28.	SRU13310	1	AUTO ALIGN PIVOT (NS)



# FEED BAR ASSEMBLY - 12"



FNG8143-70

## FEED BAR ASSEMBLY - 12"

ITEM	PART NO	QTY	DESCRIPTION
1.	0501CYL	1	CYLINDER CLEVIS
	3002PIN	1	CLEVIS PIN
	3022PIN	1	COTTER PIN (1/8")
2.	0519CYL	1	FEED CYLINDER
3.	0611VAL	2	FLOW CONTROL VALVE
4.	1108MCP		DRILL STEM BUSHING (5/8" BIT DIAMETER)
	1109MCP		DRILL STEM BUSHING (3/4" BIT DIAMETER)
	1110MCP		DRILL STEM BUSHING (7/8" BIT DIAMETER)
	1111MCP		DRILL STEM BUSHING (1" BIT DIAMETER)
	1112MCP		DRILL STEM BUSHING (1-1/8"-2-1/2" BIT DIA.)
5.	2053FIT	2	AIR FITTING (AFTER SN G 724)
6.	2158PFT	2	BRASS STREET L 3/8" (AFTER SN G 724)
7.	2501BLT	5	BOLT (1/4" X 3/4")
8.	2537BLT	2	BOLT (3/8" X 3/4")
9.	2540BLT	2	BOLT (3/8" X 1-1/4")
10.	2541BLT	1	BOLT (3/8" X 1-1/2")
11.	2562BLT	1	BOLT (1/2" X 1-1/2")(AFTER SN G 713)
12.	2563BLT	1	BOLT (1/2" X 2")(AFTER SN G 713)
13.	2572BLT	1	BOLT (1/2" X 4-1/2")
14.	2716NUT	5	LOCKNUT (1/4")
15.	2727NUT	3	LOCKNUT (3/8")
16.	2734NUT	2	LOCKNUT (1/2")
17.	2801WAS	2	WASHER (1/4")
18.	2820WAS	4	WASHER (3/8")
19.	2831WAS	1	WASHER-THICK (1/2")
20.	3030PIN	1	LANYARD
21.	CRA0218	1	CARRIAGE LOCK
22.	MFA0609	1	BIT GUIDE
23.	MFA0624	1	CYLINDER MOUNT BRACKET
24.	MFA0626	2	STOP PAD
25.	MFA0674	1	SWIVEL BOLT (BEFORE SN G 700)
26.	MFA0674	1	SWIVEL BOLT (AFTER SN G 700)
27.	MFA0690	1	BIT GUIDE KEEPER
28.	MOB0917	1	AUTO ALIGN STOP (AFTER SN G 713)
29.	SRU1325	1	FEED BAR ASSEMBLY RIGHT
30.	SRU1326	1	FEED BAR ASSEMBLY LEFT (NS)

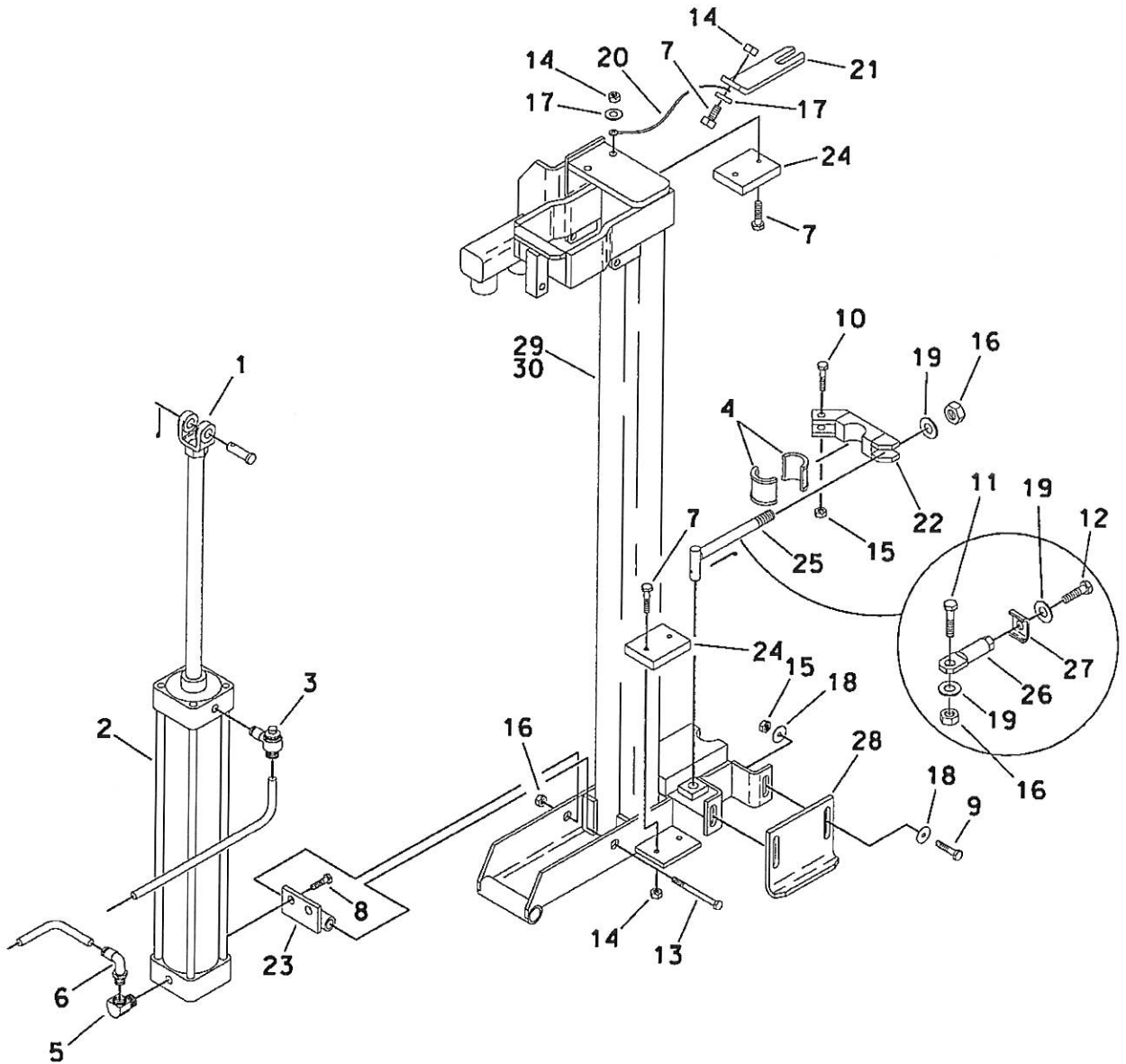
FNG8143-70



## FEED BAR ASSEMBLY - 18"

ITEM	PART NO	QTY	DESCRIPTION
1.	0501CYL	1	CYLINDER CLEVIS
	3002PIN	1	CLEVIS PIN
	3022PIN	1	COTTER PIN (1/8")
2.	05140 CYL	1	FEED CYLINDER
3.	0611VAL	2	FLOW CONTROL VALVE
4.	1108MCP		DRILL STEM BUSHING (5/8" BIT DIAMETER)
	1109MCP		DRILL STEM BUSHING (3/4" BIT DIAMETER)
	1110MCP		DRILL STEM BUSHING (7/8" BIT DIAMETER)
	1111MCP		DRILL STEM BUSHING (1" BIT DIAMETER)
	1112MCP		DRILL STEM BUSHING (1-1/8"-2-1/2" BIT DIA.)
5.	2053FIT	2	AIR FITTING (AFTER SN G 724)
6.	2158PFT	2	BRASS STREET L 3/8" (AFTER SN G 724)
7.	2501BLT	5	BOLT (1/4" X 3/4")
8.	2537BLT	2	BOLT (3/8" X 3/4")
9.	2540BLT	2	BOLT (3/8" X 1-1/4")
10.	2541BLT	1	BOLT (3/8" X 1-1/2")
11.	2562BLT	1	BOLT (1/2" X 1-1/2")(AFTER SN G 713)
12.	2563BLT	1	BOLT (1/2" X 2")(AFTER SN G 713)
13.	2572BLT	1	BOLT (1/2" X 4-1/2")
14.	2716NUT	5	LOCKNUT (1/4")
15.	2727NUT	3	LOCKNUT (3/8")
16.	2734NUT	2	LOCKNUT (1/2")
17.	2801WAS	2	WASHER (1/4")
18.	2820WAS	4	WASHER (3/8")
19.	2831WAS	1	WASHER-THICK (1/2")
20.	3030PIN	1	LANYARD
21.	CRA0218	1	CARRIAGE LOCK
22.	MFA0609	1	BIT GUIDE
23.	MFA0624	1	CYLINDER MOUNT BRACKET
24.	MFA0626	2	STOP PAD
25.	MFA0674	1	SWIVEL BOLT (BEFORE SN G 700)
26.	MFA0674	1	SWIVEL BOLT (AFTER SN G 700)
27.	MFA0690	1	BIT GUIDE KEEPER
28.	MOB0917	1	AUTO ALIGN STOP (AFTER SN G 713)
29.	SRU1334	1	FEED BAR ASSEMBLY RIGHT
30.	SRU1335	1	FEED BAR ASSEMBLY LEFT (NS)

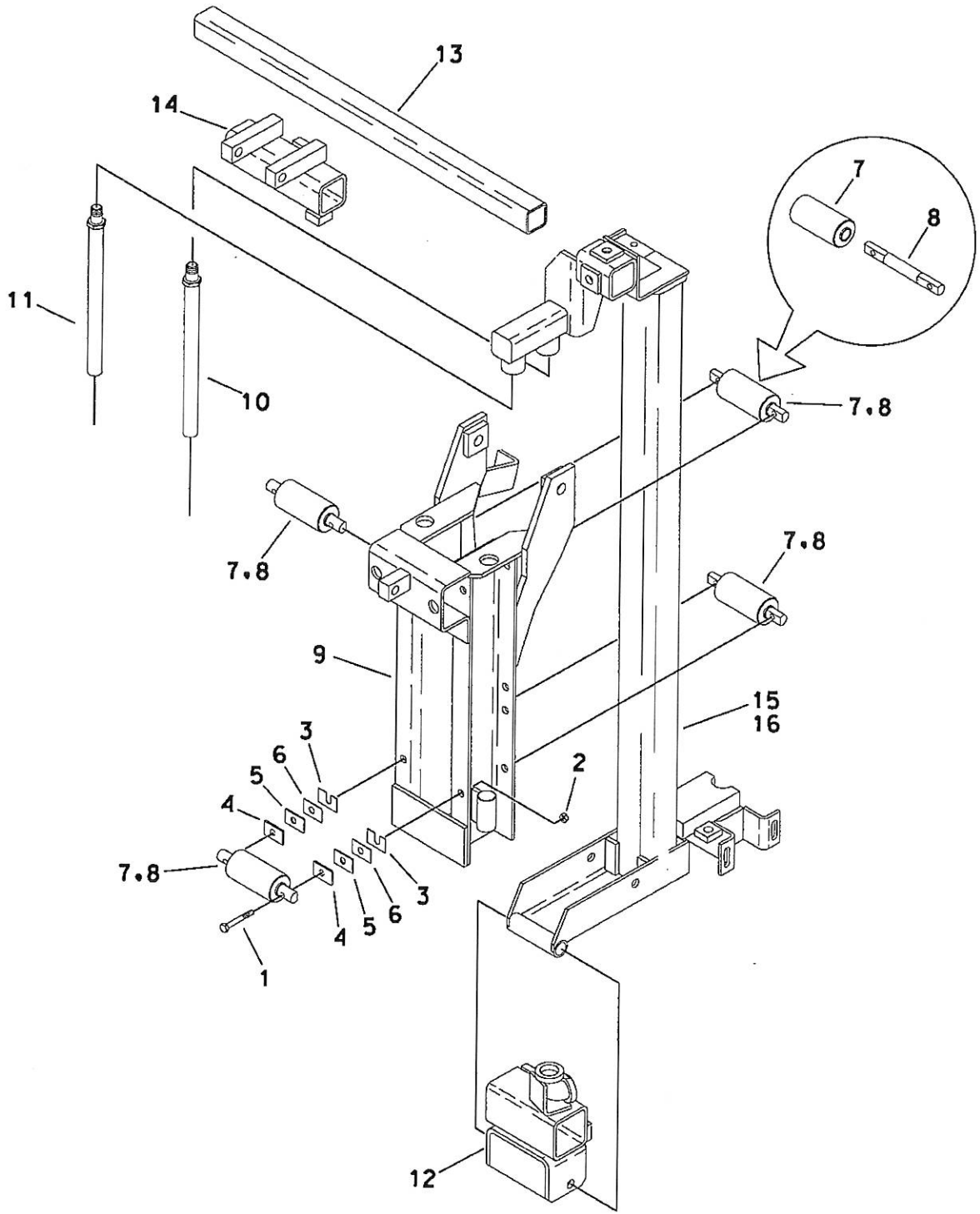
# FEED BAR ASSEMBLY - 24"



# FEED BAR ASSEMBLY - 24"

ITEM	PART NO	QTY	DESCRIPTION
1.	0501CYL	1	CYLINDER CLEVIS
	3002PIN	1	CLEVIS PIN
	3022PIN	1	COTTER PIN (1/8")
2.	05160 CYL	1	FEED CYLINDER
3.	0611VAL	2	FLOW CONTROL VALVE
4.	1108MCP		DRILL STEM BUSHING (5/8" BIT DIAMETER)
	1109MCP		DRILL STEM BUSHING (3/4" BIT DIAMETER)
	1110MCP		DRILL STEM BUSHING (7/8" BIT DIAMETER)
	1111MCP		DRILL STEM BUSHING (1" BIT DIAMETER)
	1112MCP		DRILL STEM BUSHING (1-1/8"-2-1/2" BIT DIA.)
5.	2053FIT	2	AIR FITTING (AFTER SN G 724)
6.	2158PFT	2	BRASS STREET L <sup>3/8</sup> " (AFTER SN G 724)
7.	2501BLT	5	BOLT (1/4" X <sup>3/4</sup> " )
8.	2537BLT	2	BOLT (3/8" X <sup>3/4</sup> " )
9.	2540BLT	2	BOLT (3/8" X 1-1/4")
10.	2541BLT	1	BOLT (3/8" X 1-1/2")
11.	2562BLT	1	BOLT (1/2" X 1-1/2")(AFTER SN G 713)
12.	2563BLT	1	BOLT (1/2" X 2")(AFTER SN G 713)
13.	2572BLT	1	BOLT (1/2" X 4-1/2")
14.	2716NUT	5	LOCKNUT (1/4")
15.	2727NUT	3	LOCKNUT (3/8")
16.	2734NUT	2	LOCKNUT (1/2")
17.	2801WAS	2	WASHER (1/4")
18.	2820WAS	4	WASHER (3/8")
19.	2831WAS	1	WASHER-THICK (1/2")
20.	3030PIN	1	LANYARD
21.	CRA0218	1	CARRIAGE LOCK
22.	MFA0609	1	BIT GUIDE
23.	MFA0624	1	CYLINDER MOUNT BRACKET
24.	MFA0626	2	STOP PAD
25.	MFA0674	1	SWIVEL BOLT (BEFORE SN G 700)
26.	MFA0674	1	SWIVEL BOLT (AFTER SN G 700)
27.	MFA0690	1	BIT GUIDE KEEPER
28.	MOB0917	1	AUTO ALIGN STOP (AFTER SN G 713)
29.	SRU1325	1	FEED BAR ASSEMBLY RIGHT
30.	SRU1326	1	FEED BAR ASSEMBLY LEFT (NS)

# CARRIAGE ASSEMBLY - 12"



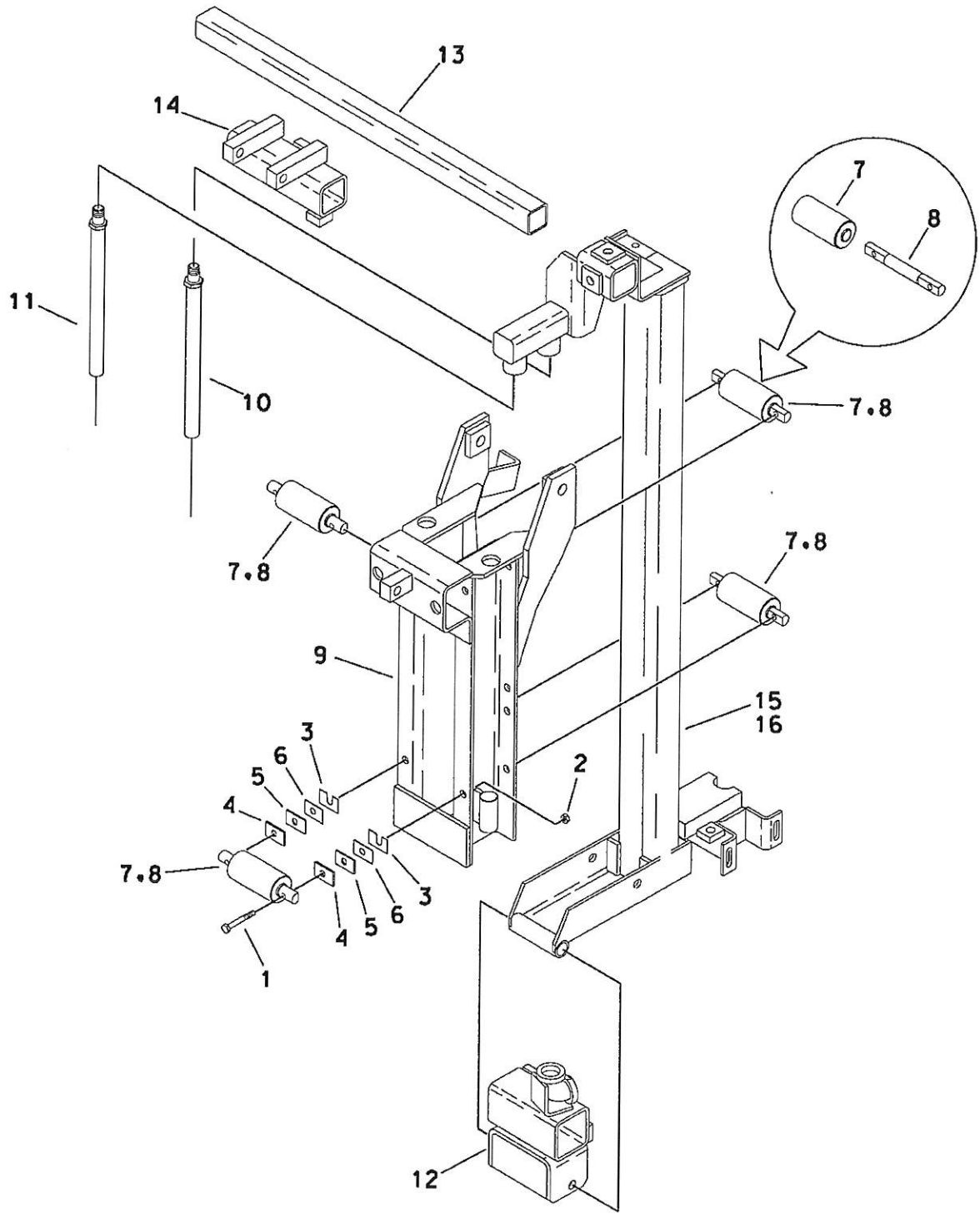
FNG8143-80

## CARRIAGE ASSEMBLY - 12"

ITEM	PART NO	QTY	DESCRIPTION
1.	2528BLT	8	BOLT (5/16" X 1-3/4")
2.	2719NUT	8	LOCKNUT (5/16")
3.	7009TAB	2	STAINLESS STEEL SHIM
4.	7011TAB	2	SHIM (12 GA)
5.	7012TAB	2	SHIM (18 GA)
6.	7013TAB	2	SHIM (22 GA)
7.	CRA0233	4	ROLLER BEARING DRUM
8.	CRA0234	4	ROLLER BEARING AXLE
9.	CRG0108	1	CARRIAGE
10.	HOS1501	1	HOSE, FEED BAR TO DRILL
11.	HOS1502	1	HOSE, TOOL BAR TO FEED BAR
12.	SRU1314	1	FEED BAR-TOOL BAR MT
13.	SRU1318	1	OUTSIDE TOOL BAR
14.	SRU1320	1	ROD END CYL MT-BAR
15.	SRU1325	1	FEED BAR ASSEMBLY RT
16.	SRU1326	1	FEED BAR ASSEMBLY LT (NS)



# CARRIAGE ASSEMBLY - 18"



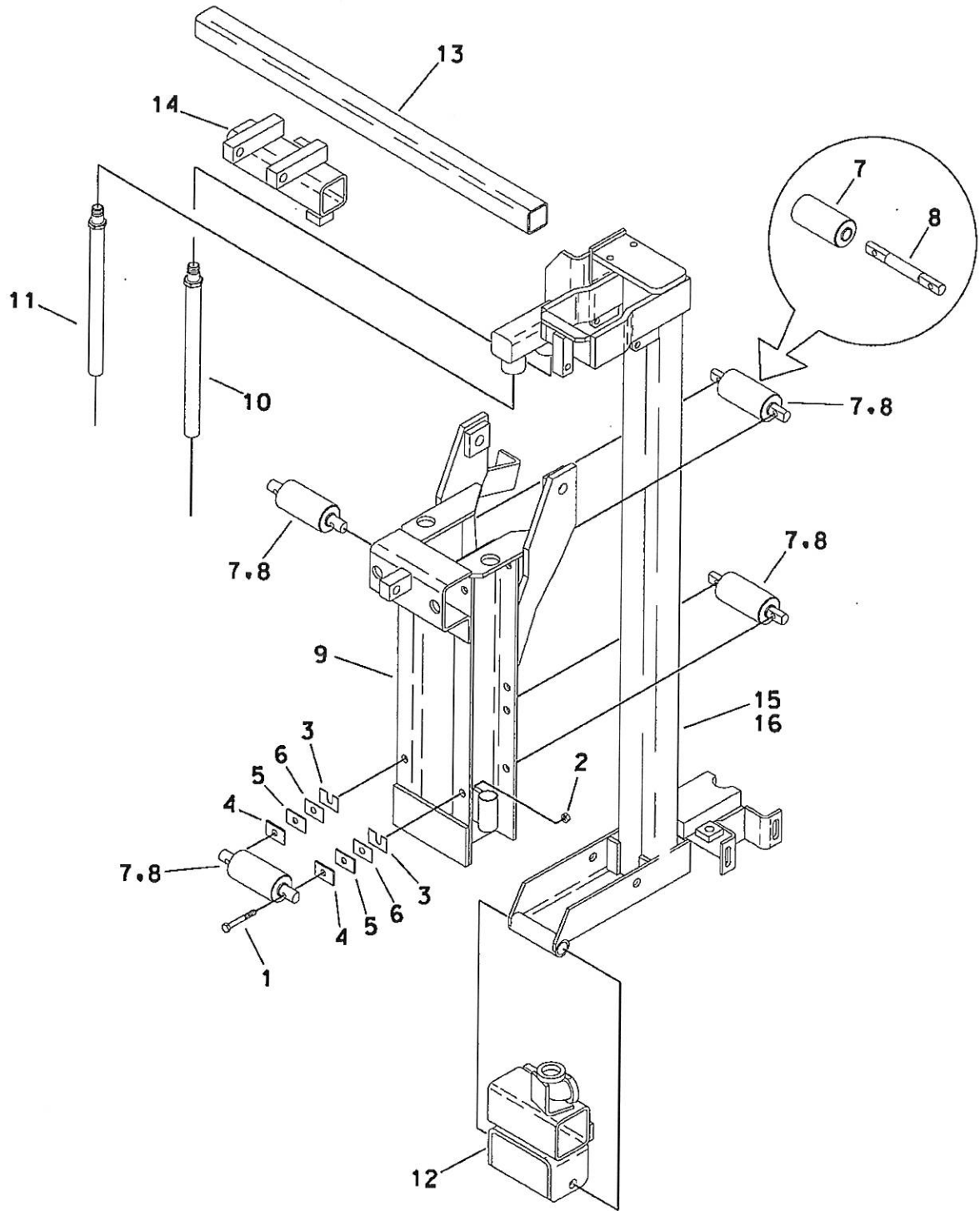
FNG8143-81

## CARRIAGE ASSEMBLY - 18"

ITEM	PART NO	QTY	DESCRIPTION
1.	2528BLT	8	BOLT (5/16" X 1-3/4")
2.	2719NUT	8	LOCKNUT (5/16")
3.	7009TAB	2	STAINLESS STEEL SHIM
4.	7011TAB	2	SHIM (12 GA)
5.	7012TAB	2	SHIM (18 GA)
6.	7013TAB	2	SHIM (22 GA)
7.	CRA0233	4	ROLLER BEARING DRUM
8.	CRA0234	4	ROLLER BEARING AXLE
9.	CRG0110	1	CARRIAGE
10.	HOS1501	1	HOSE, FEED BAR TO DRILL
11.	HOS1502	1	HOSE, TOOL BAR TO FEED BAR
12.	SRU1314	1	FEED BAR-TOOL BAR MT
13.	SRU1318	1	OUTSIDE TOOL BAR
14.	SRU1320	1	ROD END CYL MT-BAR
15.	SRU1334	1	FEED BAR ASSEMBLY RT
16.	SRU1335	1	FEED BAR ASSEMBLY LT (NS)

FNG8143-81

# CARRIAGE ASSEMBLY - 24"

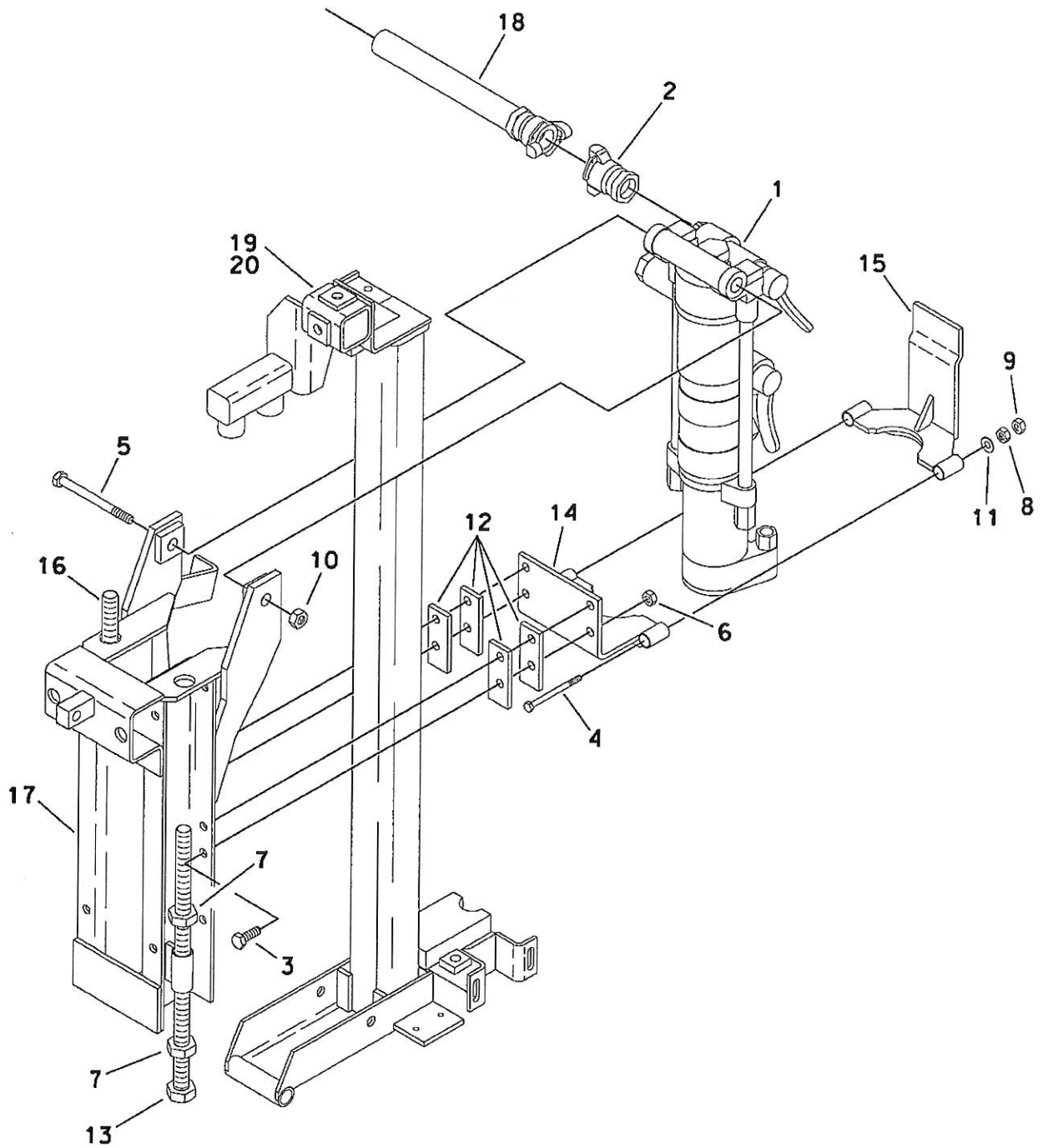


FNG8143-82

## CARRIAGE ASSEMBLY - 24"

ITEM	PART NO	QTY	DESCRIPTION
1.	2528BLT	8	BOLT (5/16" X 1-3/4")
2.	2719NUT	8	LOCKNUT (5/16")
3.	7009TAB	2	STAINLESS STEEL SHIM
4.	7011TAB	2	SHIM (12 GA)
5.	7012TAB	2	SHIM (18 GA)
6.	7013TAB	2	SHIM (22 GA)
7.	CRA0233	4	ROLLER BEARING DRUM
8.	CRA0234	4	ROLLER BEARING AXLE
9.	CRG0110	1	CARRIAGE
10.	HOS1501	1	HOSE, FEED BAR TO DRILL
11.	HOS1502	1	HOSE, TOOL BAR TO FEED BAR
12.	SRU1314	1	FEED BAR-TOOL BAR MT
13.	SRU1318	1	OUTSIDE TOOL BAR
14.	SRU1320	1	ROD END CYL MT-BAR
15.	SRU1334	1	FEED BAR ASSEMBLY RT
16.	SRU1335	1	FEED BAR ASSEMBLY LT (NS)

# CARRIAGE / AIR DRILL - 12"

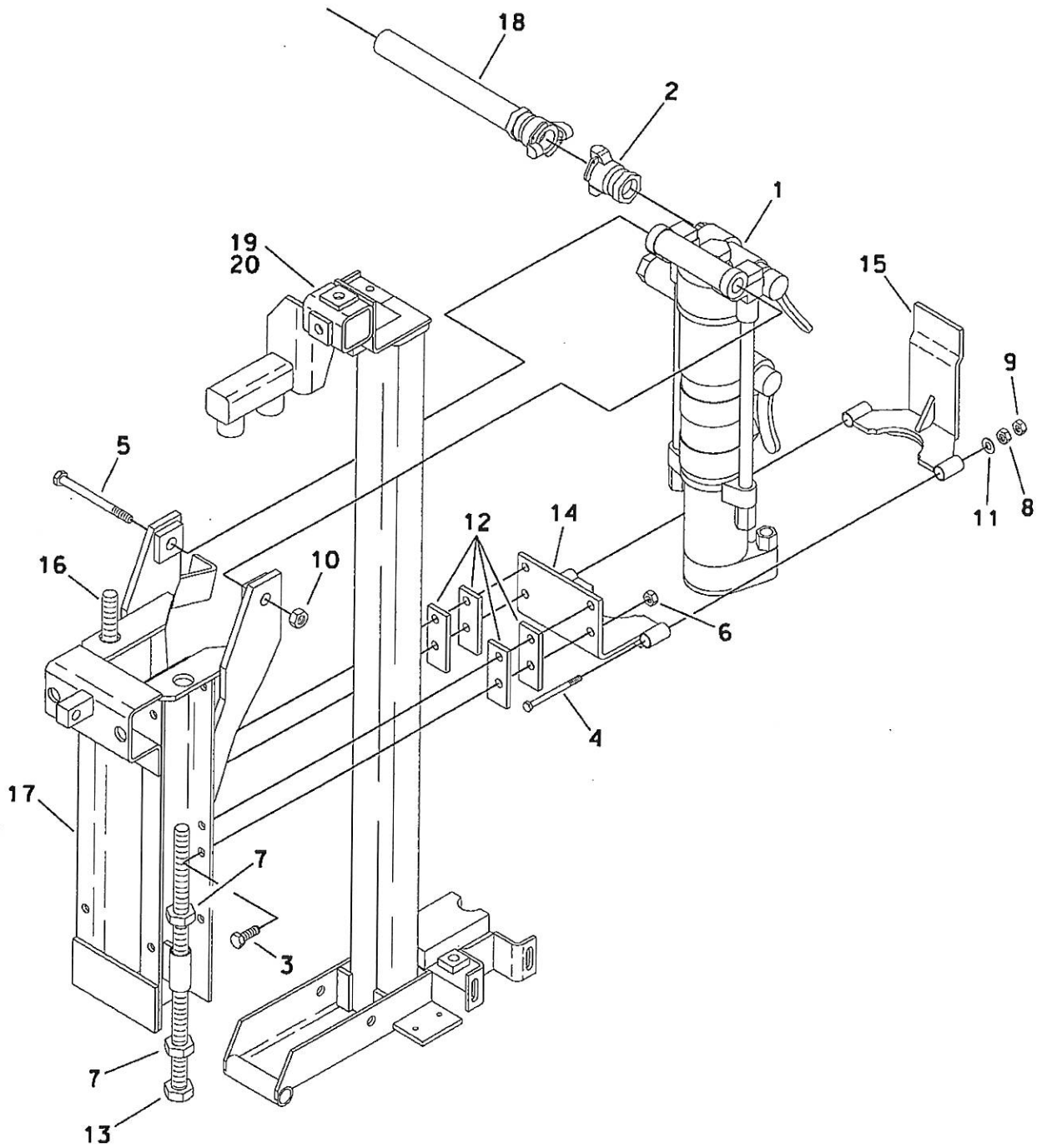


FNG8143-90

# CARRIAGE / AIR DRILL - 12"

ITEM	PART NO	QTY	DESCRIPTION
1.	0101DRL	1	CP 32 A ROCK DRILL
2.	2009FIT	1	HOSE FITTING
3.	2540BLT	4	BOLT (3/8" X 1-1/4")
4.	2570BLT	2	BOLT (1/2" X 4")
5.	2590BLT	1	BOLT (5/8" X 8")
6.	2727NUT	4	LOCKNUT (3/8")
7.	2731NUT	4	COIL ROD NUT (1/2")
8.	2732NUT	2	STD NUT (1/2")
9.	2734NUT	2	LOCKNUT (1/2")
10.	2742NUT	1	LOCKNUT (5/8")
11.	2832WAS	2	WASHER (1/2")
12.	7010TAB	4	SHIM (16 GA - 2 HOLE)
13.	CRA0202	1	STOP ROD
14.	CRA0214	1	UPPER DRILL BRACKET
15.	CRA0216	1	LOWER DRILL BRKT/EX DEFLEC
16.	CRA0241	1	STOP ROD
17.	CRG0108	1	CARRIAGE
18.	HOS1501	1	FEED BAR TO DRILL
19.	SRU1325	1	FEED BAR ASSEMBLY RT
20.	SRU1326	1	FEED BAR ASSEMBLY LT (NS)

# CARRIAGE / AIR DRILL - 18"



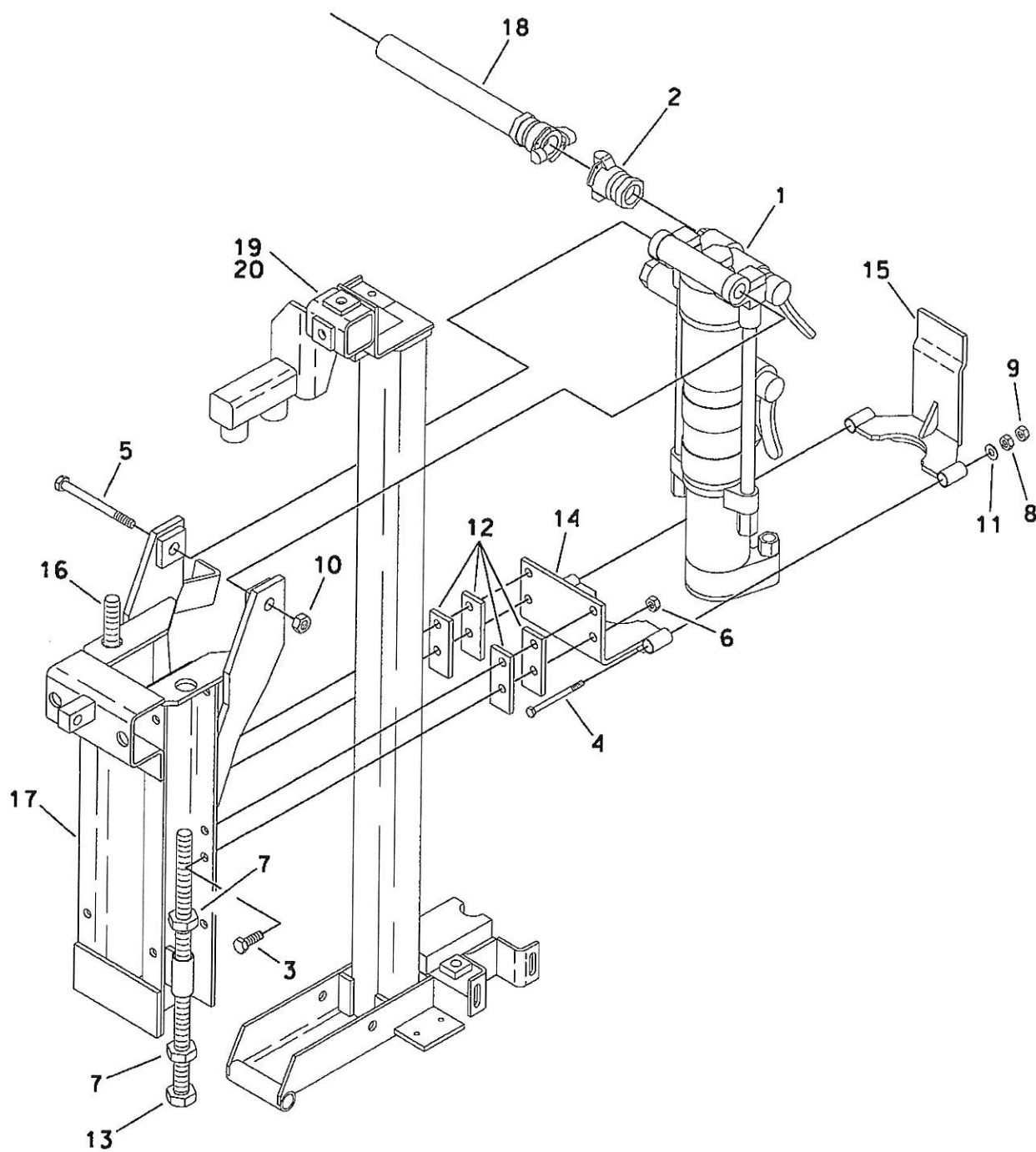
FNG8143-91

# CARRIAGE / AIR DRILL - 18"

ITEM	PART NO	QTY	DESCRIPTION
1.	0101DRL	1	CP 32 A ROCK DRILL
2.	2009FIT	1	HOSE FITTING
3.	2540BLT	4	BOLT (3/8" X 1-1/4")
4.	2570BLT	2	BOLT (1/2" X 4")
5.	2590BLT	1	BOLT (5/8" X 8")
6.	2727NUT	4	LOCKNUT (3/8")
7.	2731NUT	4	COIL ROD NUT (1/2")
8.	2732NUT	2	STD NUT (1/2")
9.	2734NUT	2	LOCKNUT (1/2")
10.	2742NUT	1	LOCKNUT (5/8")
11.	2832WAS	2	WASHER (1/2")
12.	7010TAB	4	SHIM (16 GA - 2 HOLE)
13.	CRA0202	1	STOP ROD
14.	CRA0214	1	UPPER DRILL BRACKET
15.	CRA0216	1	LOWER DRILL BRKT/EX DEFLEC
16.	CRA0241	1	STOP ROD
17.	CRG0110	1	CARRIAGE
18.	HOS1501	1	FEED BAR TO DRILL
19.	SRU1334	1	FEED BAR ASSEMBLY RT
20.	SRU1335	1	FEED BAR ASSEMBLY LT (NS)



# CARRIAGE / AIR DRILL - 24"

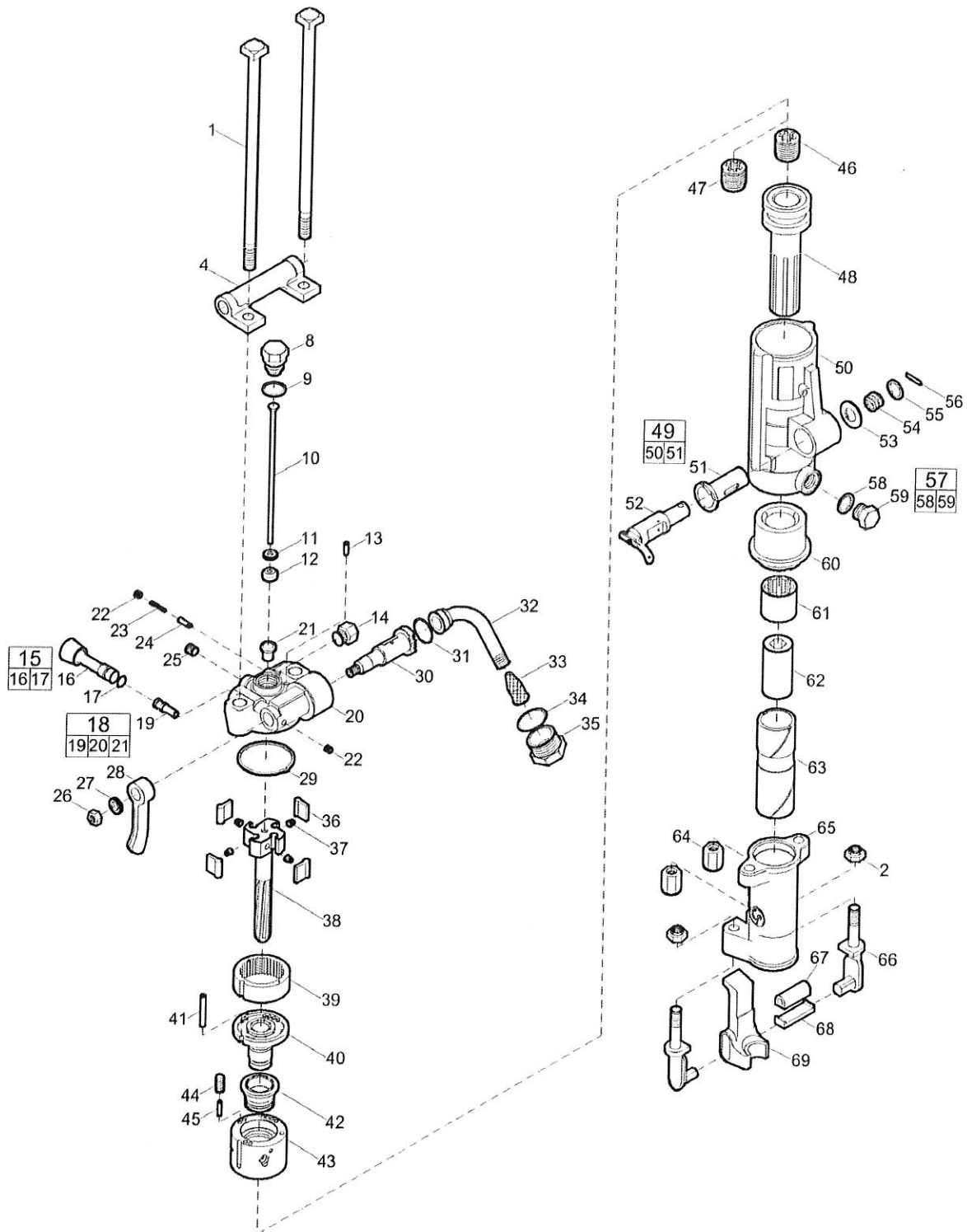


FNG8143-92

# CARRIAGE / AIR DRILL - 24"

ITEM	PART NO	QTY	DESCRIPTION
1.	0101DRL	1	CP 32 A ROCK DRILL
2.	2009FIT	1	HOSE FITTING
3.	2540BLT	4	BOLT (3/8" X 1-1/4")
4.	2570BLT	2	BOLT (1/2" X 4")
5.	2590BLT	1	BOLT (5/8" X 8")
6.	2727NUT	4	LOCKNUT (3/8")
7.	2731NUT	4	COIL ROD NUT (1/2")
8.	2732NUT	2	STD NUT (1/2")
9.	2734NUT	2	LOCKNUT (1/2")
10.	2742NUT	1	LOCKNUT (5/8")
11.	2832WAS	2	WASHER (1/2")
12.	7010TAB	4	SHIM (16 GA - 2 HOLE)
13.	CRA0202	1	STOP ROD
14.	CRA0214	1	UPPER DRILL BRACKET
15.	CRA0216	1	LOWER DRILL BRKT/EX DEFLEC
16.	CRA0241	1	STOP ROD
17.	CRG0110	1	CARRIAGE
18.	HOS1501	1	FEED BAR TO DRILL
19.	SRU1334	1	FEED BAR ASSEMBLY RT
20.	SRU1335	1	FEED BAR ASSEMBLY LT (NS)

Spare parts list CP 0032 A 7/8" x 3 1/4"



Refer to the Parts Online web page for most up-to-date information. The printed information might be outdated.

Item	Part No.	Name	Qty	L
1	R086623	Bolt - Thru	2	
2	R005742	Nut - Elastic stop	Z	A
4	R086608	Bracket - Handle	1	
8	R076793	Plug - Air tube	1	
9	R000537	Gasket - Tube plug	2	
10	R077184	Tube - Air	1	
11	R075449	Washer - Air tube	1	
12	R075099	Rubber - Air tube	1	
13	R075802	Pin - Valve plunger	1	
14	R076372	Plug - Water valve	1	
15	R079130	Water valve port plug, complete	1	
16	-	Water valve port plug	1	
17	C079489	O-ring	1	
18	R087948	Backhead, complete	1	
19	R098054	Bushing - Water valve	1	
20	-	Backhead	1	
21	R137738	Bushing - Blow tube	1	
22	C068064	Plug - Pipe	2	
23	R085671	Spring - Valve plunger	1	
24	R086627	Plunger - Throttle valve	1	
25	C068799	Plug - pipe, Ø 1/4 in., Ø 6.5 mm	1	C
26	P002149	Nut - Hexagon	1	D
27	C036717	Lockwasher - Head latch	1	E
28	R079124	Handle - Throttle valve	1	
29	H0979432	Gasket	1	
30	R086628	Valve - Throttle	1	
31	P103521	O-ring	1	
32	R075265	Swivel - Air inlet	1	
33	R005584	Screen - Air inlet	1	
34	R110317	O-ring	1	
35	R000530	Air swivel nut	1	
36	R075267	Pawl	4	
37	R086654	Spring - Pawl	4	
38	R086622	Bar - Rifle	1	

Refer to the Parts Online web page for most up-to-date information. The printed information might be outdated.

Item	Part No.	Name	Qty	L
39	R076194	Ring - Ratchet	1	
40	R098085	Bushing - Valve guide	1	
41	R075772	Pin - Valve case dowel	1	
42	R076263	Valve	1	
43	R076264	Case - Valve	1	
44	R098084	Plug - Oil regulating	1	
45	R085625	Stem - Oil regulating	1	
46	R075839	Nut - Rifle bar	1	F
47	R075826	Nut - Rifle bar	1	G
48	R000088	Piston	1	
49	R087990	Cylinder, complete	1	
50	--	Cylinder	1	
51	R086611	Bushing - Blower valve	1	
52	R086612	Valve - Blower	1	
53	R075777	Washer - Blower valve	1	
54	R075778	Spring - Blower valve	1	
55	R075780	Washer - Valve spring	1	
56	R076266	Pin - Spring	1	
57	R085611	Oil plug, complete	1	
58	R091176	Gasket - Oil plug	1	
59	--	Oil plug	1	
60	R042161	Bushing - Cylinder	1	
61	R086733	Nut - Chuck rotation	1	
62	R099374	Chuck, 7/8" x 31/4" (22 x 82.5 mm)	1	
63	R041321	Sleeve - Chuck, 7/8" x 31/4" (22 x 82.5 mm)	1	
64	R085756	Nut - Thru bolt	2	
65	R041320	Fronthead, 7/8" x 31/4" (22 x 82.5 mm)	1	
66	R093896	Tunnion - Retainer	2	
67	R093897	Buffer - Retainer	1	
68	R093898	Retainer - Latch shoe	1	
69	R093913	Retainer, 7/8" (22 mm)	1	

Comments for Page: CP 0032 A 7/8" x 3/4"

## (L)OCAL REMARKS

A | 5/8" - 11

B | 1/8"

C | 1/4"

Refer to the Parts Online web page for most up-to-date information. The printed information might be outdated.

**Service Kits Available**

- Metal Bowl & Sight Gage Kit \*
- Fill Cap Kit
- Manual Drain Kit (Twist Style)
- Manual Drain Kit (Push-N-Drain Style)
- Lubricator Service Kit (Body Restrictor Kit)
- Mounting Bracket Kit \*\*
- Auto-Fill Device Kit
- Pressure Fill Adapter Kit (Remote Fill Adapter Kit)
- Sight Dome & Fill Cap Kit
- Sight Gage Kit
- Pressure Fill Button
- Tamperproof Adjusting Cap

\*Comes with Twist Style Manual Drain.

\*\*Not supplied with units, must be ordered separately.

- PS354BP 12
- PS516P 13
- PS512P 14
- PS513P 15
- PS331CP 16
- PS309P 17
- PS368P 18
- PS122P 19
- PS509P 20
- PS317P 21
- P11912 22
- P78449 23

- Outer Sight Dome
- Fill Cap
- Bowl Seal
- Sight Gage
- O-Ring - mounting screw to sight gage
- Mounting Screw - for sight gage
- Seal - sight gage to bowl
- Drain Nut
- Manual Drain Assembly (Twist Style)
- Metal Bowl (without sight gage)
- Pick-Up Tube
- Connector - for pick-up tube
- Check Ball - for pick-up tube
- Metering Block
- O-Ring - for metering block
- O-Ring - for metering screw
- Metering Screw
- Seal - metering block to body
- Tamperproof Plug - for metering screw
- O-Ring - body to fill plug or adapter (for fill button)
- Mounting Screw - recirculating base to body
- Auto Fill Device
- O-Ring - auto fill device to bowl
- Fill Button Assembly
- Adapter for fill button
- O-Ring - insert to bowl
- Insert
- Retaining Ring - for insert

**Parts Identification List**

- | Item # | Description                     |
|--------|---------------------------------|
| 1      | Metal Bowl (with sight gage)    |
| 2      | Recirculating Base              |
| 3      | Scoop for recirculating base    |
| 4      | Return Tube                     |
| 5      | Restrictor                      |
| 6      | Injector Cone                   |
| 7      | Injector Inlet                  |
| 8      | O-Ring - injector inlet to body |
| 9      | Body                            |
| 10     | Gasket- sight domes to body     |
| 11     | Inner Sight Dome                |

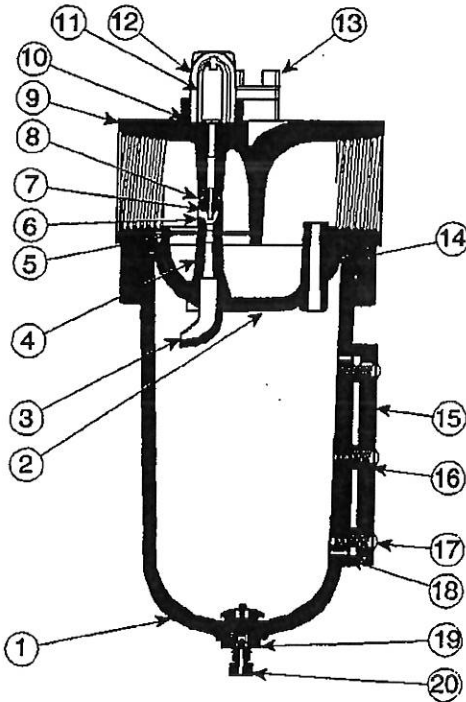


FIGURE 1: 18L with Metal Bowl, Sight Gage, & Manual (Twist) Drain

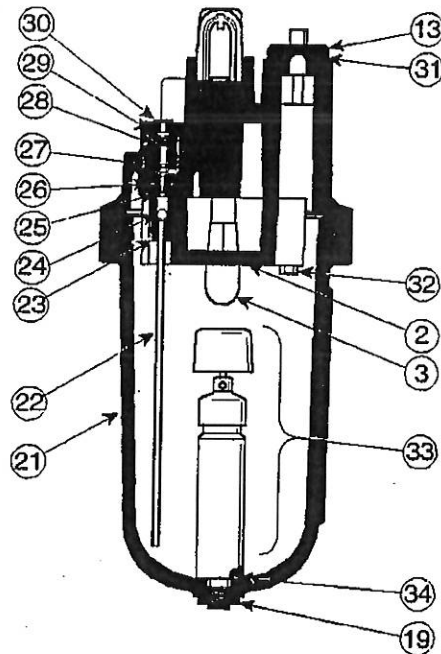


FIGURE 2: 18L with Metal Bowl & Auto Fill Device

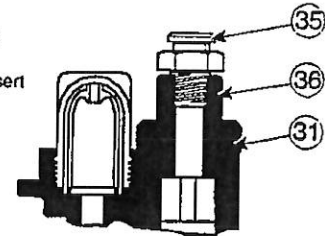


FIGURE 3: Adapter & Fill Button on Body

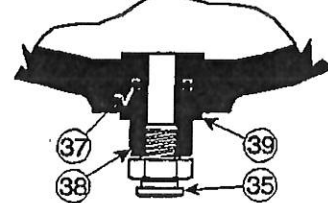
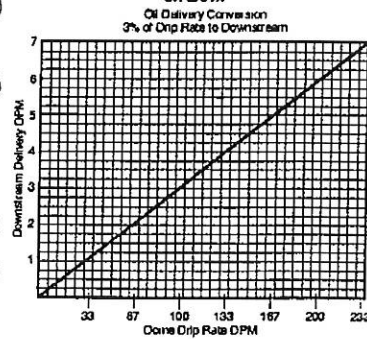


FIGURE 4: Remote Fill Button on Bowl



**! WARNING**

**FAILURE OR IMPROPER SELECTION OR IMPROPER USE OF THE PRODUCTS AND/OR SYSTEMS DESCRIBED HEREIN OR RELATED ITEMS CAN CAUSE DEATH, PERSONAL INJURY AND PROPERTY DAMAGE.**

This document and other information from Parker Hannifin Corporation, its subsidiaries and authorized distributors provide product and/or system options for further investigation by users having technical expertise. It is important that you analyze all aspects of your application, including consequences of any failure and review the information concerning the product or system in the current product catalog. Due to the variety of operating conditions and applications for these products or systems, the user, through its own analysis and testing, is solely responsible for making the final selection of the products and systems and assuring that all performance, safety and warning requirements of the application are met.

The products described herein, including without limitation, product features, specifications, designs, availability and pricing, are subject to change by Parker Hannifin Corporation and its subsidiaries at any time without notice.

**EXTRA COPIES OF THESE INSTRUCTIONS ARE AVAILABLE FOR INCLUSION IN EQUIPMENT / MAINTENANCE MANUALS THAT UTILIZE THESE PRODUCTS. CONTACT YOUR LOCAL REPRESENTATIVE.**