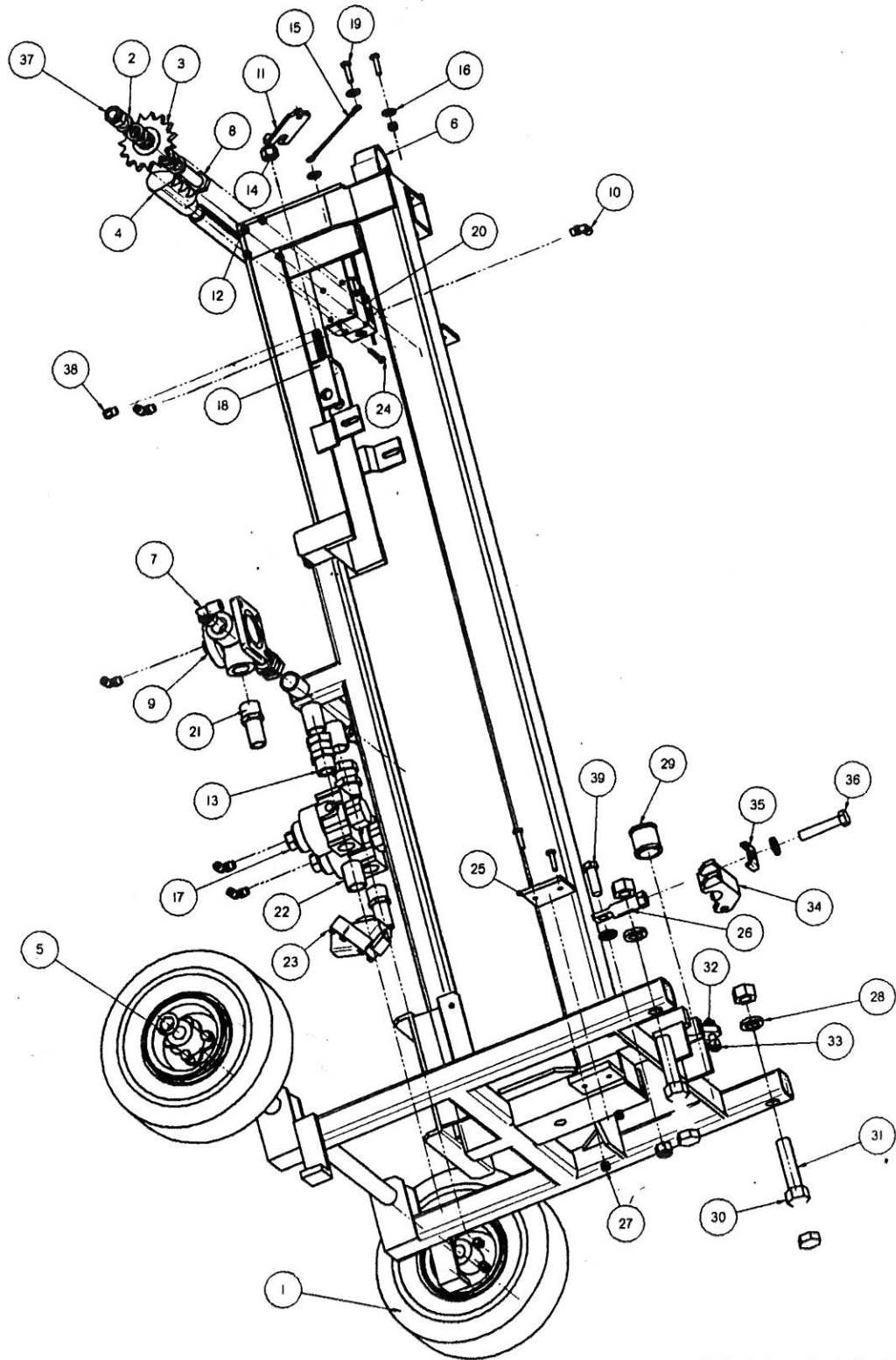


MAIN FRAME ASSEMBLY



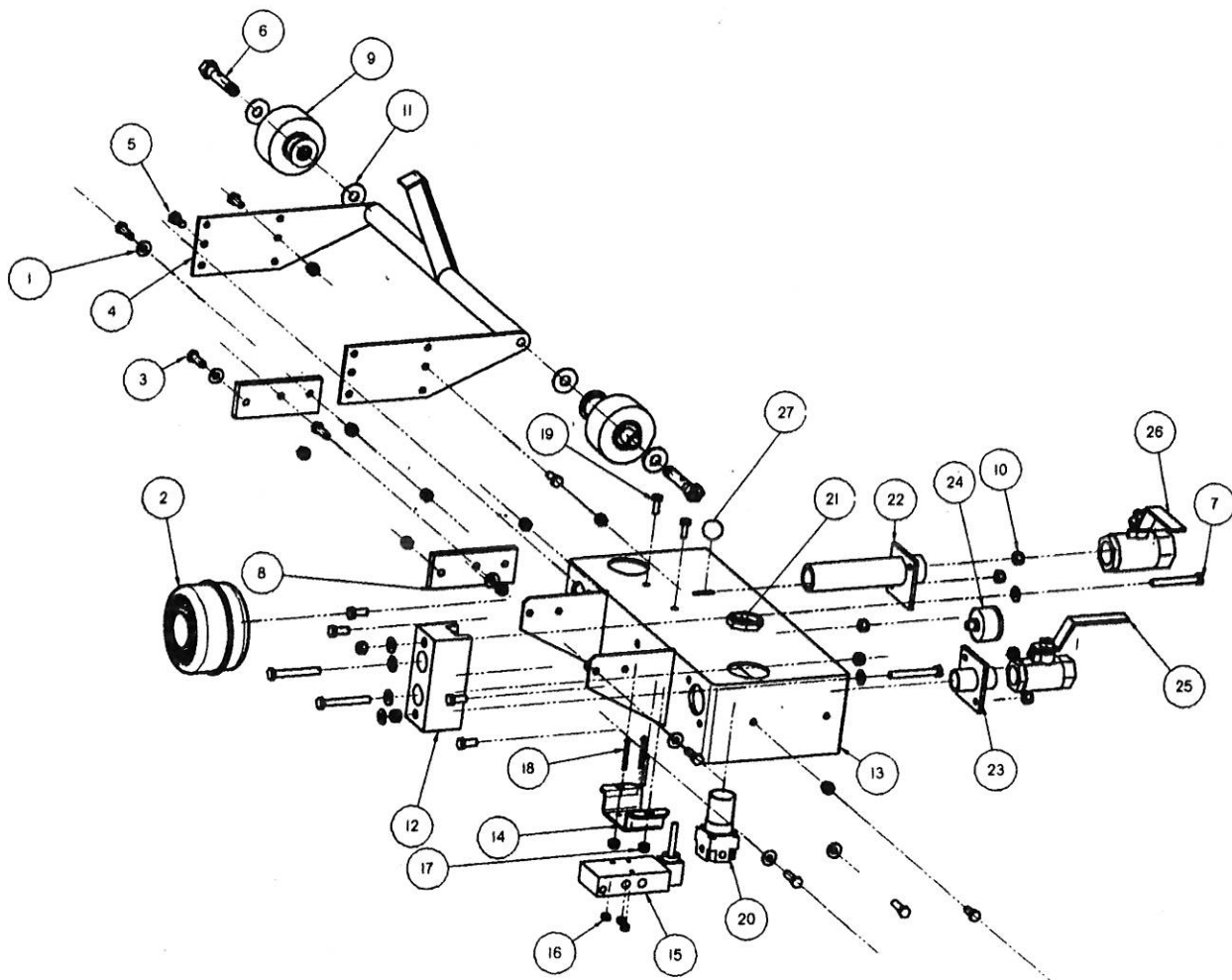
FNG 81005-4

MAIN FRAME ASSEMBLY

Item Number	Part Number	Quantity	Description
1	0202WHL.asm	2	WHEEL AND TIRE ASSEMBLY
2	2831WAS.par	8	1/2" X 7/8" 10 GA. MACHINE BUSHING
3	1517GBX.par	1	IDLER SPROCKET
4	1820GR0.par	2	HAND GRIP
5	2851OWAS.par	4	3/4" THIN MACHINE BUSHING
6	MNF050221.PAR	1	MAIN FRAME
7	2055FIT.par	1	3/8" X 1/2" MALE 90
8	2583BLT.par	1	5/8" X 2 1/2" BOLT
9	06075VAL.par	1	AUTO SPACE VALVE
10	2050FIT.par	5	1/4" X 1/8" MALE 90
11	CRA0218.par	1	CARRIAGE LOCK
12	2713NUT.par	4	3/16" NYL. LOCK NUT
13	20010FIT.par	3	3/4" SWIVEL CONNECTION
14	2734NUT.par	2	1/2" NYL. LOCK NUT
15	3030PIN.par	1	6" LANYARD WITH LOOPS
16	2801WAS.par	3	1/4" FLAT WASHER
17	08113REG.par	2	3/4" PLO. REGULATOR
18	MFA06715.par	1	SPROCKET CLEVIS
19	2503BLT.par	4	1/4" X 1" BOLT
20	0608VAL.par	1	AUTO SHUT OFF VALVE
21	2003FIT.par	3	3/4" HOSE FITTING MP.
22	2112PFT.par	1	3/4" X 1 3/8" NIPPLE
23	0604VAL.par	1	QUICK EXHAUST VALVE
24	2484BLT.par	4	3/16" X 1 3/4" BOLT
25	MFA0626.par	2	STOP PAD
26	MFA0674.par	1	SWIVEL BOLT
27	2716NUT.par	5	1/4" NYL. LOCK NUT
28	2852WAS.par	2	3/4" LOCK WASHER
29	1112MCP.par	1	1 1/8" BUSHING
30	2748NUT.par	4	3/4" STANDARD NUT
31	25997BLT.par	2	3/4 X 6 10THD. TAP BOLT
32	2541BLT.par	1	3/8" X 1 1/2" BOLT
33	2727NUT.par	1	3/8" NYL. LOCK NUT
34	MFA0609.par	1	BIT GUIDE
35	MFA0690.par	1	BIT GUIDE KEEPER
36	2564BLT.par	1	1/2" X 2 1/2" BOLT
37	2743NUT.par	1	5/8" NYL. LOCK NUT
38	2066FIT.par	1	1/4" X 1/8" MALE CONNECTION
39	2562BLT.par	1	1/2" X 1 1/2" BOLT
40	2501NUT.par	1	1/4" X 3/4" BOLT

FNG 81005-4

CONTROL PANEL ASSEMBLY



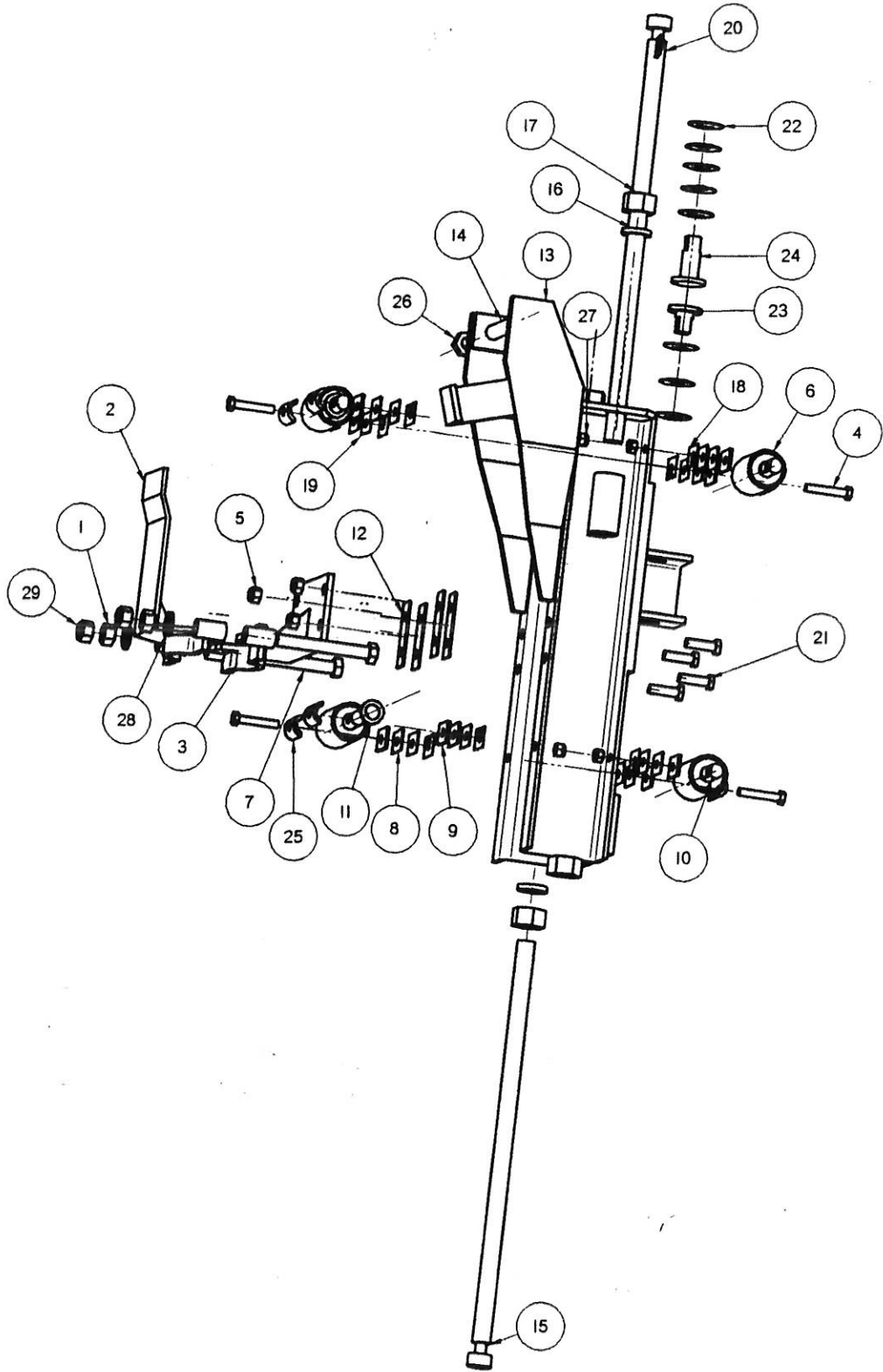
FNG 81005-3

CONTROL PANEL ASSEMBLY

Item Number	Part Number	Quantity	Description
1	280IWAS.par	12	1/4" FLAT WASHER
2	100500BRV.par	1	1" MUFFLER
3	2520BLT.par	6	5/16" X 1" BOLT
4	VERI063.par	1	HANDLE ASSEMBLY
5	2519BLT.par	8	5/16" X 3/4" BOLT
6	VERI0150.par	2	1/2" X 2 1/2" GREASE BOLT
7	253IBLT.par	4	5/16" X 2 1/2" BOLT
8	VERI066.par	2	ISOLATOR SUPPORT STRAP
9	0207WHL.asm	2	GUIDE WHEEL
10	2719NUT.par	18	5/16" LOCKNUT
11	2830WAS.par	4	1/2" FLAT WASHER
12	VERI065.par	1	ISOLATOR
13	VERI064.par	1	CONTROL PANEL
14	SRUI3460.psm	1	VALVE SPACER
15	060102VAL.par	1	3 WAY VALVE
16	2712NUT.par	3	8/32" LOCKNUT
17	2716NUT.par	2	1/4" LOCKNUT
18	2478BLT.par	3	8/32" X 1 1/2" BOLT
19	250IBLT.par	2	1/4" X 3/4" BOLT
20	0810IREG.par	1	REGULATOR
21	17056RPT.par	1	LOCK RING
22	VERI070.par	1	MUFFLER ADAPTER
23	VERI069.par	1	VALVE MOUNT
24	09022GAU.par	1	AIR PRESSURE GAUGE
25	0615VAL.asm	1	3/4" POWER VALVE
26	06150VAL.asm	1	1" AIR ONLY VALVE
27	17420IRPT.par	1	KNOB FOR 3 WAY VALVE

FNG 81005-3

CARRIAGE ASSEMBLY



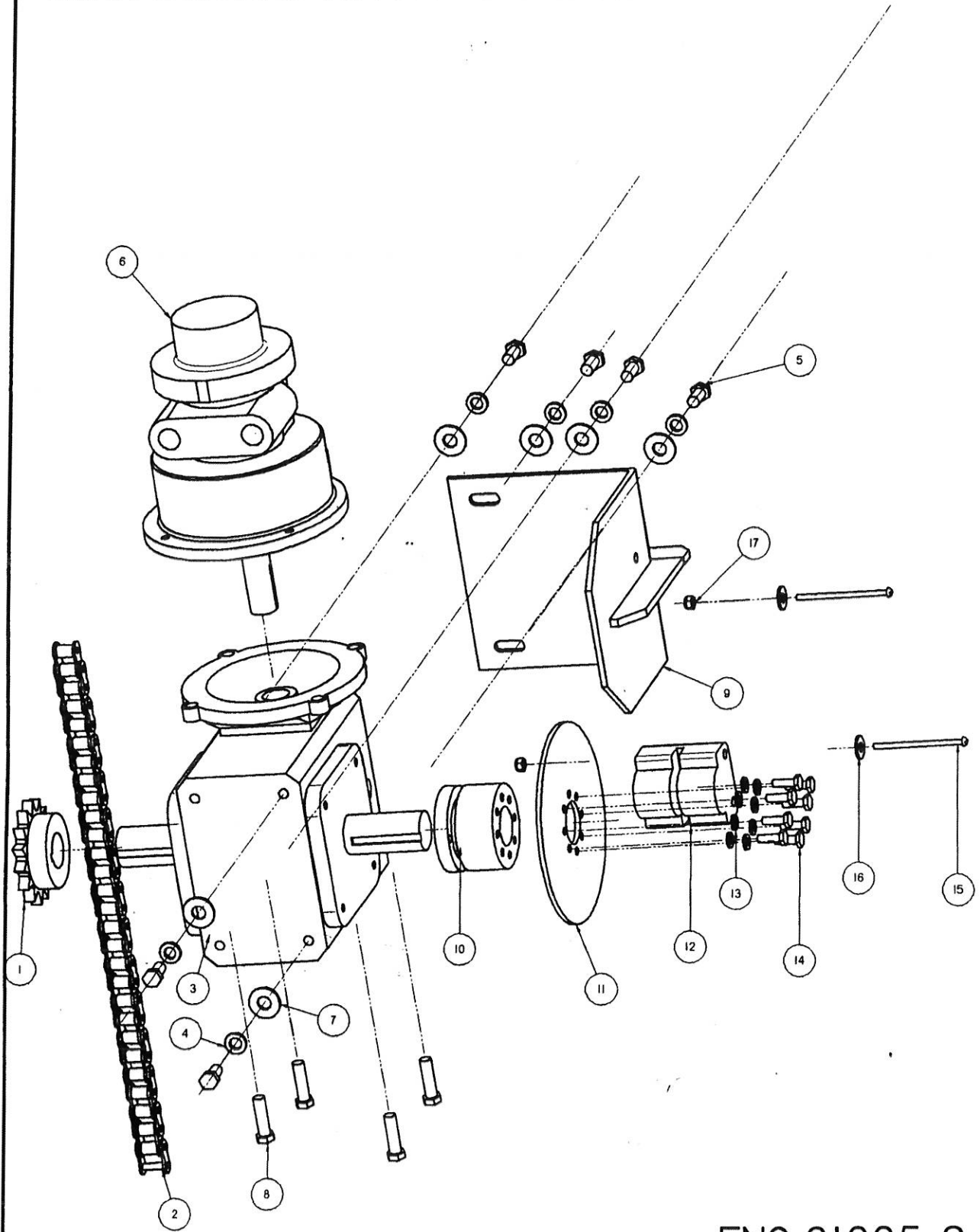
FNG 81005-1

CARRIAGE ASSEMBLY

Item Number	Part Number	Quantity	Description
1	2732NUT.par	2	1/2" STANDARD NUT
2	CRA0216.par	1	LOWER DRILL BRACKET
3	CRA0214.par	1	UPPER DRILL BRACKET
4	2528BLT.par	8	5/16" X 1 3/4" G5 BOLT
5	2727NUT.par	4	3/8" NYL. LOCK NUT
6	CRA0233.par	4	ROLLER BEARING DRUM
7	2570BLT.par	2	1/2" X 4" BOLT
8	7012TAB.par	8	18 GAUGE SHIM
9	7011TAB.par	8	12 GAUGE SHIM
10	CRA0234.par	4	ROLLER BEARING AXLE
11	2841WAS.par	8	1" OD X 5/8" ID 10 GA. WASHER
12	7010TAB.par	4	16 GAUGE TWO HOLE FLAT SHIM
13	CRA0243.par	1	CARRIAGE
14	2590BLT.par	1	5/8" X 8" BOLT
15	CRA02030.par	1	3/4" X 18" STOP ROD
16	2852WAS.par	2	3/4" LOCK WASHER
17	27490NUT.par	4	3/4" COIL ROD NUT
18	7009TAB.par	8	STAINLESS SHIM
19	7013TAB.par	8	22 GAUGE SHIM
20	CRA02040.par	1	3/4" X 18" STOP ROD WITH TAB
21	2540BLT.par	4	3/8" X 1 1/4" BOLT
22	9502MIS.par	8	SPRING WASHER
23	MFA07024.par	1	1" CARRIAGE TO CHAIN PIN
24	MFA07025.par	1	2" CARRIAGE TO CHAIN PIN
25	CRA0230.par	8	BEARING KEEPER
26	2742NUT.par	1	5/8" LOCK NUT
27	2719NUT.par	8	5/16" NYL. LOCK NUT
28	2832WAS.par	2	1/2" LOCK WASHER
29	2734NUT.par	2	1/2" NYL. LOCK NUT

FNG 81005-1

GEAR BOX AND AIR MOTOR ASSEMBLY



FNG 81005-2

GEAR BOX AND AIR MOTOR ASSEMBLY

Item Number	Part Number	Quantity	Description
1	1519GBX.par	1	1 1/8" X 15 TOOTH SPROCKET
2	1535GBX.par	1	# 50 CHAIN 8' 6"
3	15006GBX.par	1	DUAL DRIVE GEAR BOX
4	2181WAS.par	6	3/8" LOCK WASHER
5	2537BLT.par	6	3/8" X 3/4" BOLT
6	1504GBX.par	1	AIR MOTOR
7	2820WAS.par	6	3/8" FLAT WASHER
8	2540BLT.par	4	3/8" X 1 1/4" BOLT
9	MFA06585.par	1	CALIPER MT. BRACKET
10	90041MIS.par	1	BRAKE HUB
11	90042MIS.par	1	DISC BRAKE
12	90043MIS.par	1	BRAKE CALIPER
13	2810WAS.par	8	5/16" LOCK WASHER
14	2501BLT.par	8	1/4" X 3/4" BOLT
15	247800BLT.par	2	8/32" X 3" BOLT
16	2801WAS.par	2	1/4" FLAT WASHER
17	2713NUT.par	2	8/32" NYL LOCK NUT

FNG 81005-2

DRIVE MOTOR

ITEM	PART NO	QTY	DESCRIPTION
1	17330RPT	1	END CAP, DRIVE END
2 *	17331RPT	1	SHAFT SEAL
3 *	17332RPT	1	O-RING
4 *	AB927	1	BEARING, DRIVE END
5	AB162	4	DOWEL PIN
6	17333RPT	1	END PLATE, DRIVE
7 *	AC888	2	BODY GASKET
8	AC878C	1	BODY
9	AB136D	1	KEY
10	AC986	1	ROTOR ASSEMBLY
11 *	AC879	2	PUSH PIN
12 *	AC817	4	VANE, SPRING
13 *	AC816	4	VANE
14	AC964	1	END PLATE, DEAD
15 *	AC894B	1	BEARING, DEAD END
16 *	AC837	1	ENDCAP, GASKET
17	AC836	1	END CAP, DEAD END
	1733RPT	1	REPAIR KIT

* DENOTES PARTS INCLUDED IN THE SERVICE KIT.



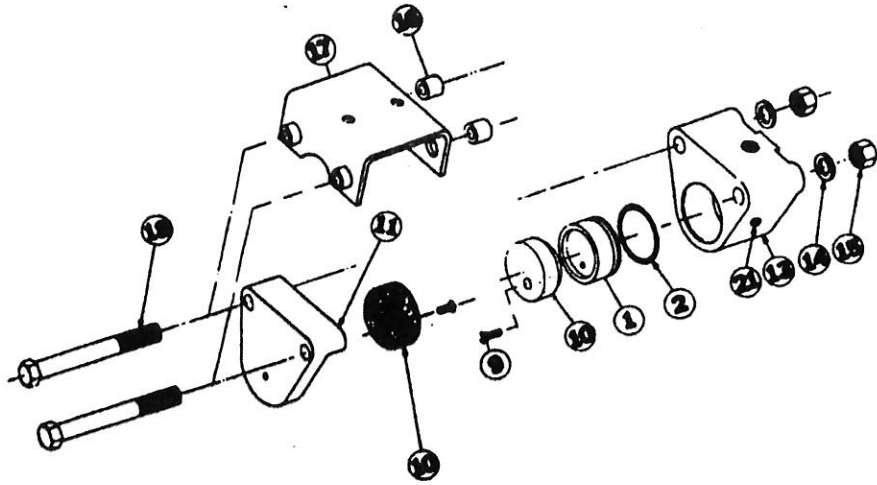
Caliper Disc Brakes 10 Series Hydraulic & Pneumatic

List of Parts

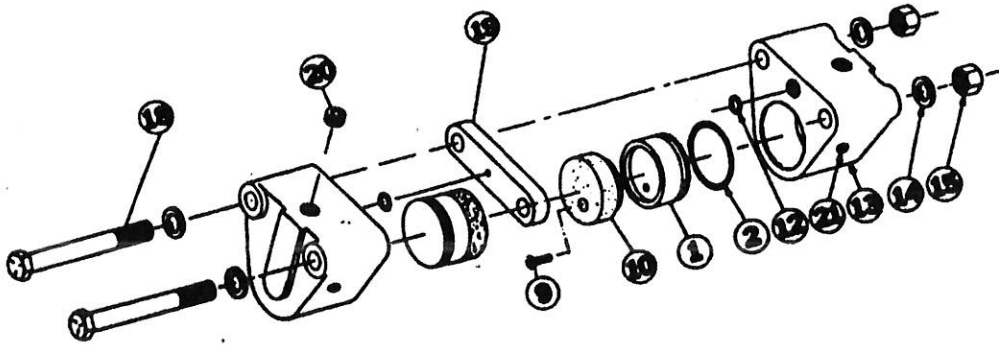
Item	Part No.	Description	Single-Acting										Double-Acting				Double-Acting Retractable			
			Assy. No.	Model No.	P10SA	P10SB	P10SAF	P10SBF	H10SAC	H10SAFC	H10SACG	H10SBCG	H10SAFCG	P10DA	P10DB	H10DAC	H10DBC	H10DACG	H10DBCg	P10DAR
1	0701-1062	Piston	1	1	1	1	1	1	1	1	1	2	2	2	2	2	2			
2.	0701-1004	O-Ring, Buna-N	1	1	1	1	1	1				2	2	2	2			2	2	
	0701-1014	O-Ring, EPR							1	1	1					2	2			
3.	0708-1002	Piston, Retractable																2	2	
4.	0708-1009	Spring, Compression																2	2	
5.	0708-1007	Screw, Shoulder																2	2	
6.	0708-1004	Plate, Seal																4	4	
7.	1001-1021	O-Ring, Buna-N																2	2	
8.	0708-1006	Puck, Retractable																2	2	
9.	0701-1006	Screw, Flat Head Slotted	2	2	2	2	2	2	2	2	2	2	2	2	2	2	2	2	4	4
10.	0701-1006	Puck	2	2	2	2	2	2	2	2	2	2	2	2	2	2	2			
11.	0705-1001	Housing, Dead Side	1	1	1	1	1	1	1	1										
12.	0701-1003	O-Ring, Buna-N										2	2	2	2			2	2	
	0701-1013	O-Ring, EPR														2	2			
13.	0708-1001	Housing, Pneumatic, Retractable																2	2	
	0708-1055	Housing, Pneumatic	1	1	1	1														
	0708-1023	Housing, Hydraulic					1	1	1	1	1									
	0708-1056	Housing, Pneumatic										2	2							
	0708-1057	Housing, Hydraulic												2	2	2	2			
14.	0701-1007	Washer	4	4			4		4	4	4		4	4	4	4	4	4	4	
15.	0701-1008	Nut, Flexloc	2	2	2	2	2	2	2	2	2	2	2	2	2	2	2	2	2	
16.	0707-1015	Ring, Spacer			4	4		4			4									
17.	0705-1016	Bracket			1	1		1			1									
18.	0705-1106	Screw, HHC	2	2			2		2	2										
	0708-1005	Screw, HHC			2	2		2			2	2	2	2	2	2	2	2	2	
19.	0701-1031	Spacer, "A" for 5/32 Thick Disc										1		1		1		1		
	0702-1032	Spacer, "B" for 1/4 Thick Disc											1		1		1		1	
	0742-1007	Spacer, "B" for 1/4 Thick Disc		1		1				1										
20.	1014-1065	Plug, Pipe 1/8-27 NPT										1	1	1	1	1	1	1	1	
21.	0720-9010	Screw, Bleeder					2	2	2	2	2			4	4	4	4	4	4	

Note: If the caliper assembly number contains the suffix "G," order EPR seals only.

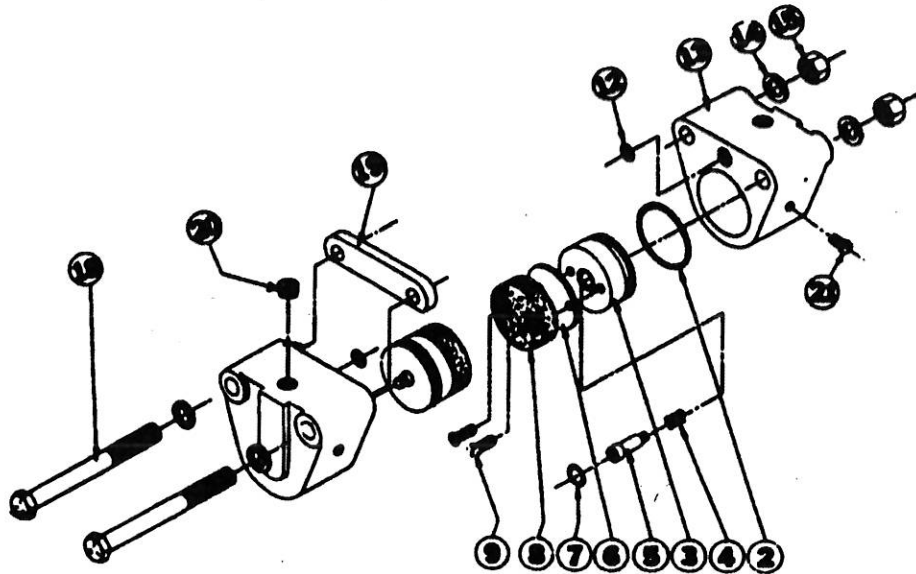
H 10S
P 10S



H 10D
P 10D



P10DR



Note: Hydraulic models purchased prior to February 1, 1988, utilize O-Ring seals on bleeder screws. Hydraulic models purchased after that date use Nylon sealing washers.

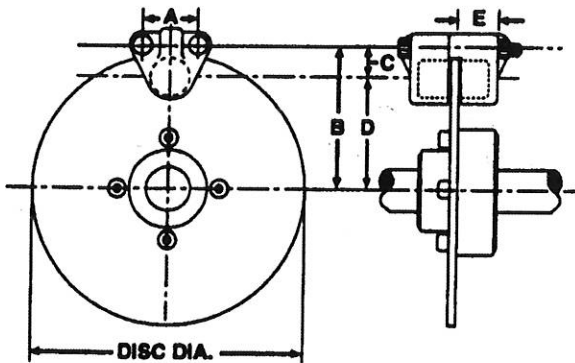
clearance between the Puck and Disc is .010" minimum per side to a maximum of .031" per side when new.

3. Discs must be free of dirt and grease for maximum life and braking action.
4. (H)(P)10D and (H)(P)10DR double-acting brakes have internal porting between the two cylinder housings making it necessary to run only one fluid line to the caliper assembly.
5. Pneumatically operated brakes must be connected to a source of clean, dry, filtered air at a pressure not to exceed 150 PSI. The use of an in-line mist lubricator is recommended to provide a very slight amount of lubrication. Any mineral base lubricating oil compatible with Buna-N Seals may be used.

way control valve. Any back pressure in the cylinder will cause drag and excess heat which will result in reduced puck life. If used with master cylinders, residual pressure checks must be removed.

9. The hydraulic type brakes are bled by loosening bleeder screw/screws at high point of brake cylinder, causes sluggish braking operation. Note: Do not pressure bleed with more than 5 PSI.

Mounting Dimensions

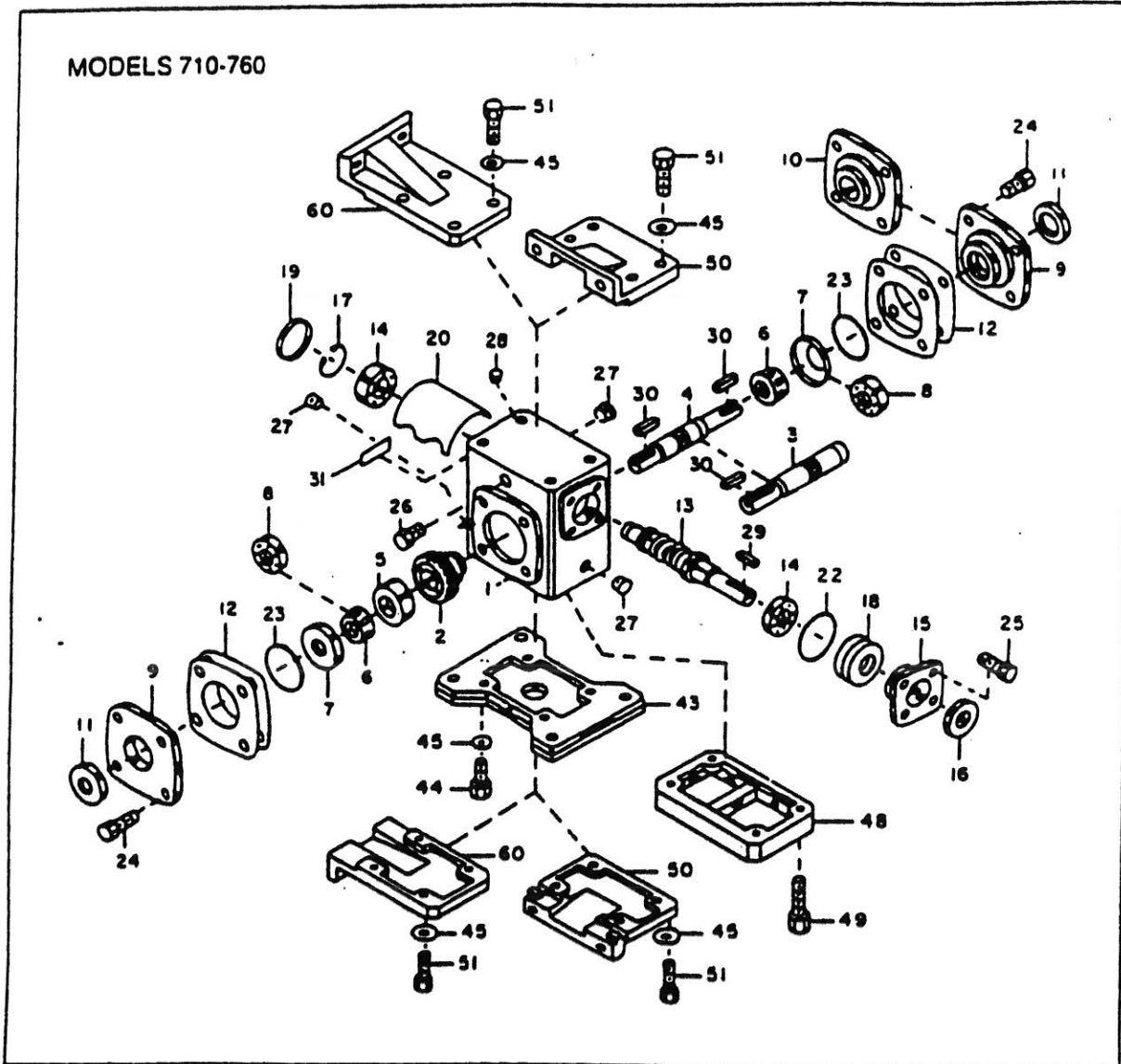


HP10 Brakes (Hydraulic/Pneumatic)

Disc Size (in.)	HP 10 Series				
	A	B	C	D	E*
6-5/16	1-5/8	3-15/32	15/16	2-17/32	1-5/32
8	1-5/8	4-5/16	15/16	3-3/8	1-5/32
10	1-5/8	5-5/16	15/16	4-3/8	1-5/32
12	1-5/8	6-5/16	15/16	5-3/8	1-5/32
16	1-5/8	8-5/16	15/16	7-3/8	1-5/32

*Caliper mounting surface nearest to surface of disc.

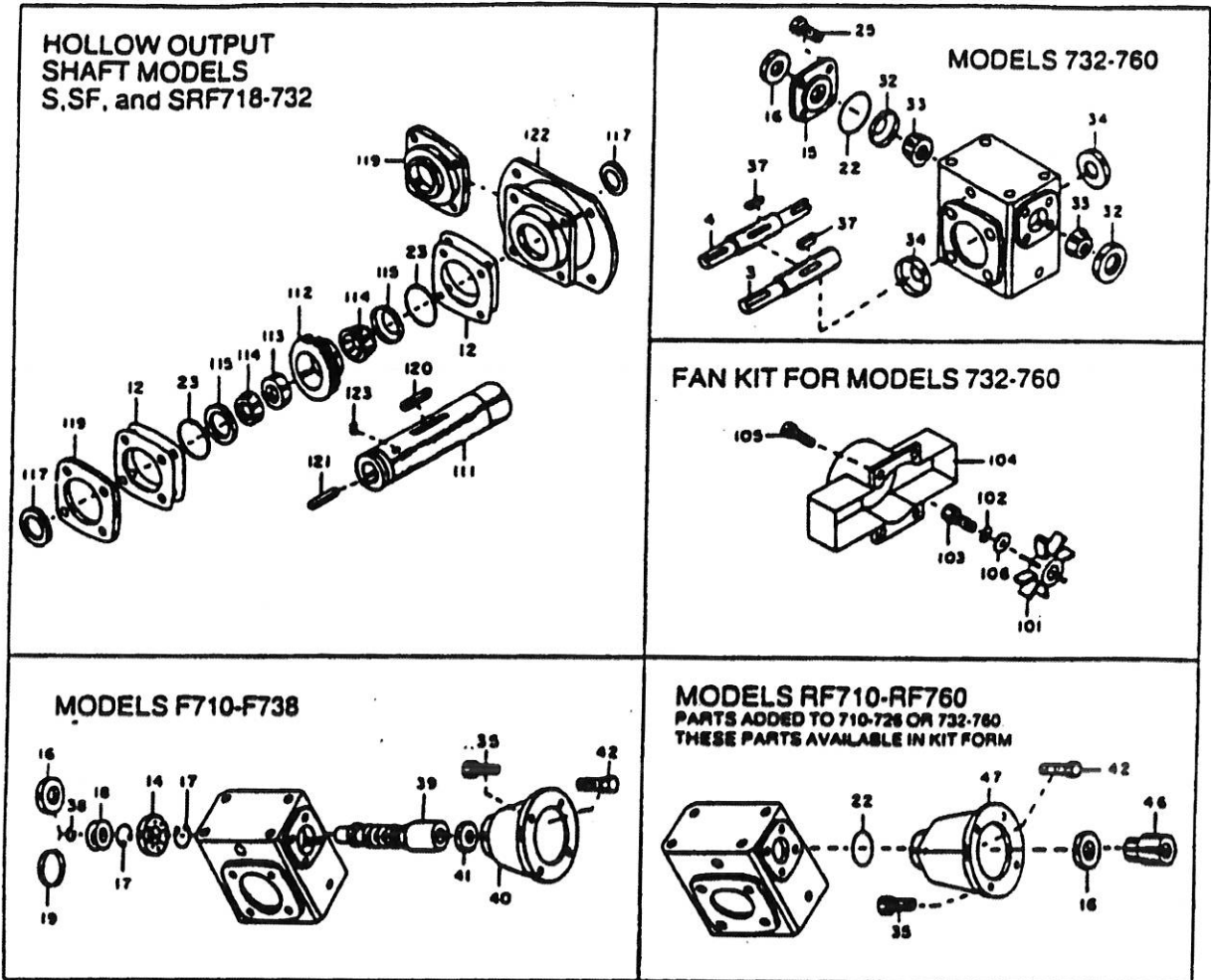
**700 SERIES WORM GEAR SPEED REDUCERS
PARTS LIST - SINGLE REDUCTION MODELS**



PART ORDERING INFORMATION

1. Be sure to provide complete Boston Gear catalog number from speed reducer nameplate, along with part description and number. For example, "One output oil seal, Part No. 11, for RF718-30-B5-G".
2. Output shaft components for Boston Gear models 710 through 726 are available only as complete assemblies that include Parts 2, 3, 5, 6, 11, 12 and 23 for single projecting shafts; and Parts 2, 4, 5, 6, 11, 12 and 23 for double projecting shafts. When ordering, specify "output shaft assembly" and full Boston Gear catalog number from nameplate.

700 SERIES WORM GEAR SPEED REDUCERS OPTIONS & ACCESSORIES - SINGLE REDUCTION MODELS



PART NO.	DESCRIPTION
1	HOUSING
2*	WORM GEAR
3*	SINGLE PROJECTING OUTPUT SHAFT
4*	DOUBLE PROJECTING OUTPUT SHAFT
5*	GEAR SPACER
6*	OUTPUT BEARINGS (CONE) - MODELS 713-760
7	OUTPUT BEARINGS (CUP) - MODELS 713-760
8	OUTPUT BEARINGS - MODEL 710 ONLY
9	BEARINGS CARRIER (OPEN)
10	BEARINGS CARRIER (CLOSED)
11*	OUTPUT OIL SEAL
12*	ADJUSTMENT SPRING
13	INPUT WORM SHAFT
14	INPUT BEARINGS - MODELS 710-760
15	INPUT BEARINGS RETAINER
16	INPUT OIL SEAL - MODELS 710-760
17	RETAINING RING
18	ADJUSTMENTS SPRING
19	SOFT PLUG - MODELS 710-760
20	INTERNAL SADDLE - MODELS 713-760
22	INPUT "O" RING
23*	OUTPUT "O" RING
24	HEX HEAD CAP SCREW
25	HEX HEAD CAP SCREW

PART NO.	DESCRIPTION
26	VENT PLUG - 2 PIECE
27	PIPE PLUG
28	PROTECTIVE CAP PLUG
29	INPUT KEY
30	OUTPUT KEY
31	NAMEPLATE
32	INPUT BEARINGS (CUP) - MODELS 732-760
33	INPUT BEARINGS (CONE) - MODELS 732-760
34	GREASE CUPS - MODELS 732-760
35	HEX HEAD CAP SCREW
37	OUTPUT SHAFT KEY - MODELS 732-760
38	RETAINING RING - MODELS 710-738
39	MOTOR SHAFT - MODELS 710-738
40	MOTOR FLANGE - MODELS 710-738
41	OIL SEAL - MODELS 710-738
42	HEX HEAD CAP SCREW
43	HORIZONTAL BASE
44	HEX HEAD CAP SCREW
45	LOCKWASHER
46	2 PIECE FC COUPLING - WITH INSERT
47	RETAINING MOTOR FLANGE
48	FRIBER BLOCK
49	HEX HEAD CAP SCREW
50	VERTICAL BASE (HIGH OR LOW)

PART NO.	DESCRIPTION
51	HEX HEAD CAP SCREW
52	VERTICAL BASE (X & Y ASSEMBLY)
101	FAN
102	SPACER
103	HEX HEAD CAP SCREW
104	FAN BLADE
105	HEX HEAD CAP SCREW
106	WASHER
108	HEX HEAD CAP SCREW
111	HOLLOW OUTPUT SHAFT
112	WORM GEAR
113	GEAR SPACER
114	OUTPUT BEARING (CONE)
115	OUTPUT BEARING (CUP)
117	OIL SEAL
119	BEARINGS CARRIER (OPEN)
120	KEY (EXTERNAL)
121	KEY (INTERNAL)
122	"Y" TYPE BASE
123	SOCKET SETSCREW

*For Models 710 to 738, these parts are available only as complete assemblies. See Part Ordering Information, #2, at left.



Pneumatic Division North America
Richland, Michigan 49083

Installation and Service
Instructions: 2R200BP
1/8", 1/4", & 3/8" 10R Economy
1/4", 3/8" & 1/2" 11R Compact
3/8", 1/2" & 3/4" 12R Standard
Pilot Controlled Regulator
ISSUED: January, 1999
Supersedes: June, 1997
ECN# P28862

WARNING

To avoid unpredictable system behavior that can cause personal injury and property damage:

- Disconnect air supply and depressurize all air lines connected to this product before installation, servicing, or conversion.
- Operate within the manufacturer's specified pressure, temperature, and other conditions listed in these instructions.
- Medium must be moisture-free if ambient temperature is below freezing.
- Service according to procedures listed in these instructions.
- Installation, service, and conversion of these products must be performed by knowledgeable personnel who understand how pneumatic products are to be applied.
- After installation, servicing, or conversion, air supply should be connected and the product tested for proper function and leakage. If audible leakage is present, or the product does not operate properly, do not put into use.
- Warnings and specifications on the product should not be covered by paint, etc. If masking is not possible, contact your local representative for replacement labels.

Application Limits

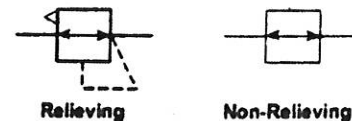
These products are intended for use in general purpose compressed air systems only.

Operating Pressure:

	kPa	psig	bar
Maximum Inlet Pressure	1720	250	17.2

Ambient Temperature Range: 0°C to 80°C (32°F to 175°F)

Symbols



Operation and Service

1. Before turning on the air supply, turn the adjusting knob on the master regulator until compression is released from the pressure control spring. Turn on air supply to the master regulator and the pilot controlled regulator. Adjust the downstream pressure by turning adjusting knob on the master regulator until the desired downstream pressure is obtained.

Installation

1. The regulator should be installed with reasonable accessibility for service whenever possible – repair service kits are available. Keep pipe or tubing lengths to a minimum with inside clean and free of dirt and chips. Pipe joint compound should be used sparingly and applied only to the male pipe – never into the female port. Do not use Teflon[®] tape to seal pipe joints – pieces have a tendency to break off and lodge inside the unit, possibly causing malfunction.
2. Install regulator so that air flow is in the direction of arrow. Installation must be upstream (high pressure) side and as close to the devices it is to service (lubricator, valve, cylinder or tool). Mounting may be in any position.
3. Gauge ports are located on both sides of the regulator body for your convenience. It is necessary to install a gauge or socket pipe plug into each port during installation.
4. For protection against rust, pipe scale and other foreign matter, install a filter on the upstream (high pressure) side as closely to the regulator as possible.

[®] Trademark of Du Pont de Nemours & Co.

WARNING

FAILURE OR IMPROPER SELECTION OR IMPROPER USE OF THE PRODUCTS AND/OR SYSTEMS DESCRIBED HEREIN OR RELATED ITEMS CAN CAUSE DEATH, PERSONAL INJURY AND PROPERTY DAMAGE.

This document and other information from Parker Hannifin Corporation, its subsidiaries and authorized distributors provide product and/or system options for further investigation by users having technical expertise. It is important that you analyze all aspects of your application, including consequences of any failure and review the information concerning the product or system in the current product catalog. Due to the variety of operating conditions and applications for these products or systems, the user, through its own analysis and testing, is solely responsible for making the final selection of the products and systems and assuring that all performance, safety and warning requirements of the application are met.

The products described herein, including without limitation, product features, specifications, designs, availability and pricing, are subject to change by Parker Hannifin Corporation and its subsidiaries at any time without notice.

EXTRA COPIES OF THESE INSTRUCTIONS ARE AVAILABLE FOR INCLUSION IN EQUIPMENT / MAINTENANCE MANUALS THAT UTILIZE THESE PRODUCTS. CONTACT YOUR LOCAL REPRESENTATIVE.

2. To decrease regulated pressure setting, always reset from a pressure lower than the final setting required. Example, lowering the secondary pressure from 80 PSIG to 60 PSIG is best accomplished by dropping the secondary pressure to 50 PSIG, then adjusting upward to 60 PSIG.
3. To service the regulator piston, poppet assembly and seat insert (10R, 11R & 12R):
 - A. Shut off air supply and depressurize the unit. Turn the adjusting knob on the master regulator until pilot pressure is relieved on the pilot controlled regulator.
 - B. Unscrew the threaded collar and remove the bonnet assembly.
 - C. Disassemble, clean and carefully inspect parts for wear or damage. If replacement is necessary, use parts from the service kits.
 - D. Lubricate poppet bore, poppet stem, lower balancing seal, and all o-rings with grease found in kit.
 - E. Lubricate bonnet bore with grease found in kit. Carefully install piston seats as shown in assembly drawing. The V side of each seal must be installed facing the end of the piston. Install vent seal if repairing a relieving regulator. Install piston assembly into bonnet.
 - F. (10R) Install poppet assembly, cap's o-ring to o-ring groove on cap. Then screw cap into body until the cap bottoms out in body.
(11R & 12R) Install poppet return spring, poppet assembly, o-rings, and seat insert.
 - G. Assemble bonnet assembly to body and tighten threaded collar hand tight plus 1/4 turn.
4. Turn on air pressure and check regulator for leakage. If leakage occurs, DO NOT OPERATE — conduct repairs again.
If you have questions concerning how to service this unit, contact your local authorized dealer or your customer service representative.

Service Kits Available

	Economy 10R	Compact 11R	Standard 12R
Regulator (Standard) Repair Kit (Relieving)	PS949P	PS749P	PS849P
Regulator (Reverse Flow) Repair Kit (Relieving)	N/A	PS749RP	PS849RP
Regulator (Standard) Repair Kit (Non-Relieving)	PS947P	PS747P	PS847P
Regulator (Reverse Flow) Repair Kit (Non-Relieving)	N/A	PS747RP	PS847RP
Seat Insert Repair Kit (Standard)	N/A	PS713P	PS813P
Gauges:			
Low Pressure			
0 to 410 kPa (0 to 60 psig)	PS530154	F781641	F781641
Standard Pressure			
0 to 1100 kPa (0 to 160 psig)	P77413	F781642	F781642
High Pressure			
0 to 2070 kPa (0 to 300 psig)	N/A	F781643	F781643

- Ⓐ Lightly grease with provided lubricant.
- Ⓑ Inspect for nicks, scratches, and surface imperfections. If present, reduced service life is probable and future replacement should be planned.
- Ⓒ Clean with lint-free cloth.

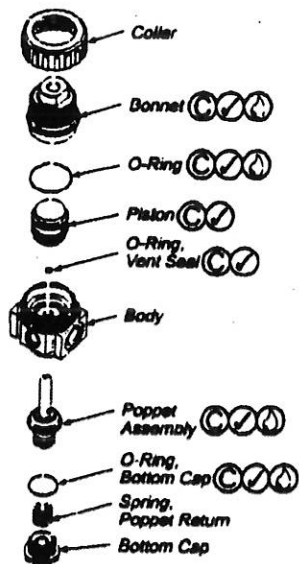


Figure 1:
10R Regulator

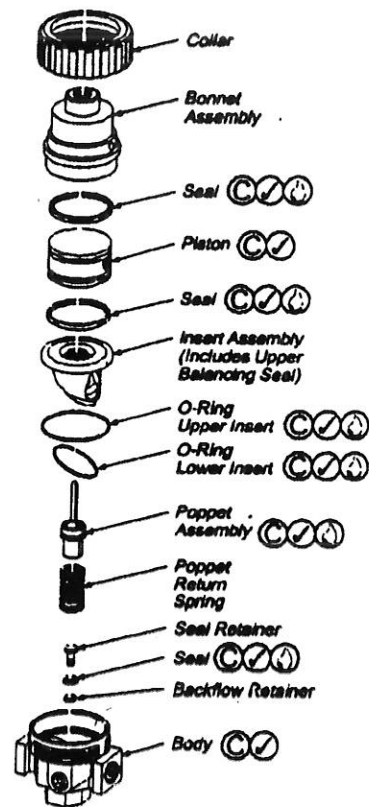
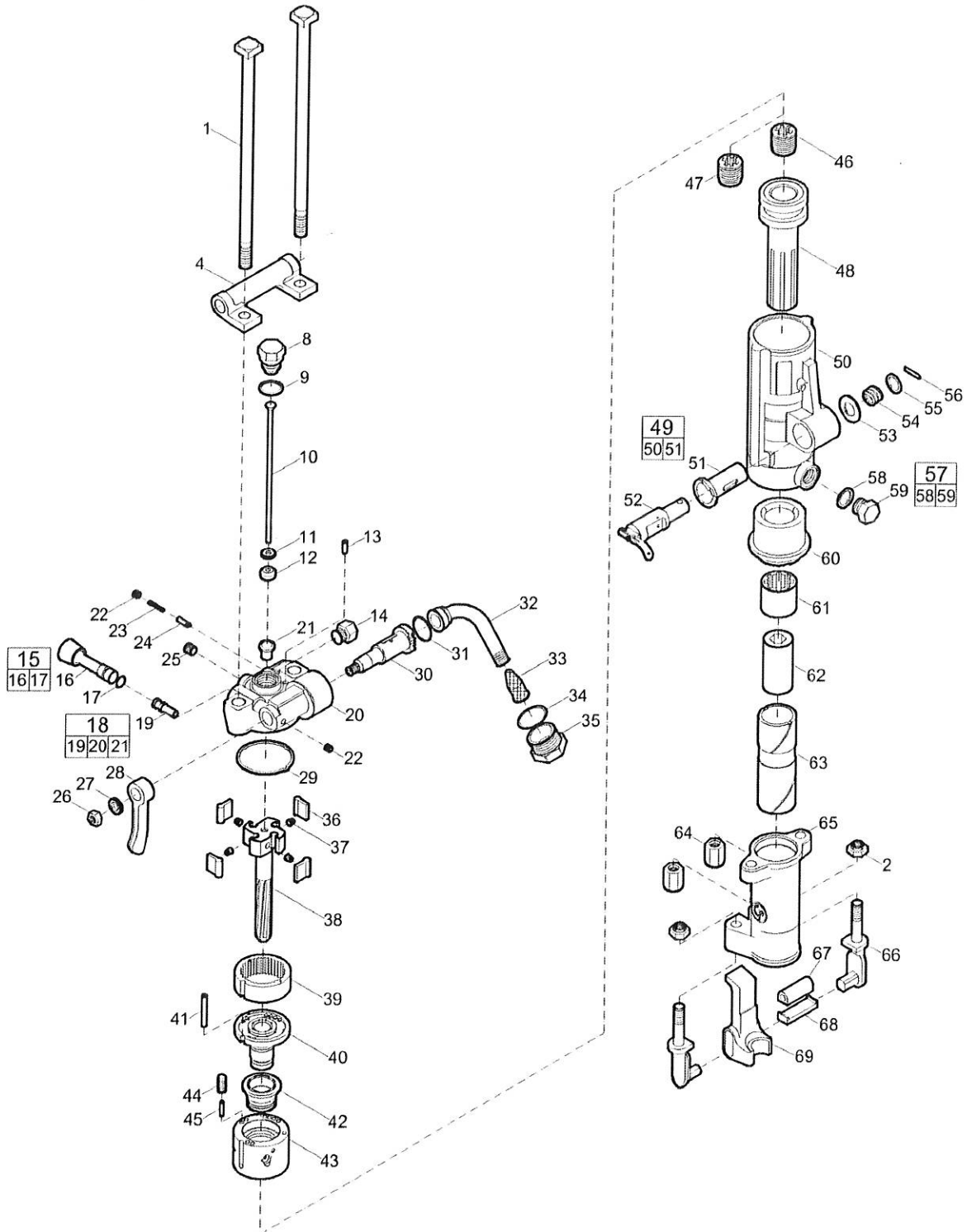


Figure 2:
11R & 12R Regulator

Spare parts list CP 0032 A 7/8" x 3/4"



Refer to the Parts Online web page for most up-to-date information. The printed information might be outdated.

Item	Part No.	Name	Qty	L
1	R086623	Bolt - Thru	2	
2	R005742	Nut - Elastic stop	2	A
4	R086608	Bracket - Handle	1	
8	R076793	Plug - Air tube	1	
9	R000537	Gasket - Tube plug	2	
10	R077184	Tube - Air	1	
11	R075449	Washer - Air tube	1	
12	R075099	Rubber - Air tube	1	
13	R075802	Pin - Valve plunger	1	
14	R076372	Plug - Water valve	1	
15	R079130	Water valve port plug, complete	1	
16	-	Water valve port plug	1	
17	C079489	O-ring	1	
18	R087948	Backhead, complete	1	
19	R098054	Bushing - Water valve	1	
20	-	Backhead	1	
21	R137738	Bushing - Blow tube	1	
22	C068064	Plug - Pipe	2	
23	R085671	Spring - Valve plunger	1	
24	R086627	Plunger - Throttle valve	1	
25	C068799	Plug - pipe, Ø 1/4 in., Ø 6.5 mm	1	C
26	P002149	Nut - Hexagon	1	D
27	C036717	Lockwasher - Head latch	1	E
28	R079124	Handle - Throttle valve	1	
29	H0979432	Gasket	1	
30	R086628	Valve - Throttle	1	
31	P103521	O-ring	1	
32	R075265	Swivel - Air inlet	1	
33	R005584	Screen - Air inlet	1	
34	R110317	O-ring	1	
35	R000530	Air swivel nut	1	
36	R075267	Pawl	4	
37	R086654	Spring - Pawl	4	
38	R086622	Bar - Rifle	1	

Refer to the Parts Online web page for most up-to-date information. The printed information might be outdated.

Item	Part No.	Name	Qty	L
39	R076194	Ring - Ratchet	1	
40	R098085	Bushing - Valve guide	1	
41	R075772	Pin - Valve case dowel	1	
42	R076263	Valve	1	
43	R076264	Case - Valve	1	
44	R098084	Plug - Oil regulating	1	
45	R085625	Stem - Oil regulating	1	
46	R075839	Nut - Rifle bar	1	F
47	R075826	Nut - Rifle bar	1	G
48	R000088	Piston	1	
49	R087990	Cylinder, complete	1	
50	--	Cylinder	1	
51	R086611	Bushing - Blower valve	1	
52	R086612	Valve - Blower	1	
53	R075777	Washer - Blower valve	1	
54	R075778	Spring - Blower valve	1	
55	R075780	Washer - Valve spring	1	
56	R076266	Pin - Spring	1	
57	R085611	Oil plug, complete	1	
58	R091176	Gasket - Oil plug	1	
59	--	Oil plug	1	
60	R042161	Bushing - Cylinder	1	
61	R086733	Nut - Chuck rotation	1	
62	R099374	Chuck, 7/8" x 31/4" (22 x 82.5 mm)	1	
63	R041321	Sleeve - Chuck, 7/8" x 31/4" (22 x 82.5 mm)	1	
64	R085756	Nut - Thru bolt	2	
65	R041320	Fronthead, 7/8" x 31/4" (22 x 82.5 mm)	1	
66	R093896	Tunnion - Retainer	2	
67	R093897	Buffer - Retainer	1	
68	R093898	Retainer - Latch shoe	1	
69	R093913	Retainer, 7/8" (22 mm)	1	

Comments for Page: CP 0032 A 5/8" x 31/4"

(L)OCAL REMARKS

A | 5/8" - 11

B | 1/8"

C | 1/4"

Refer to the Parts Online web page for most up-to-date information. The printed information might be outdated.