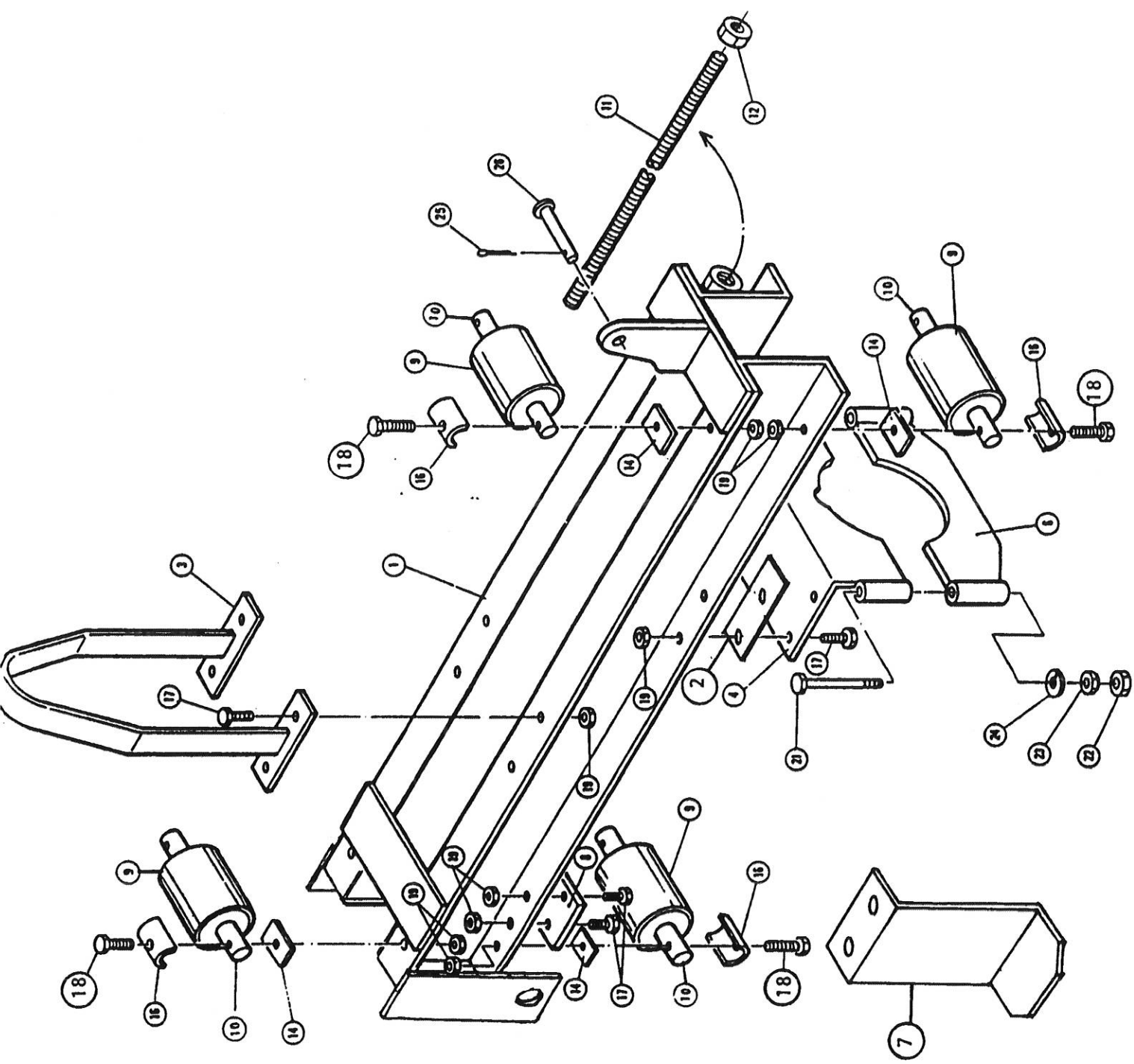


10.1 MAIN FRAME ASSEMBLY

115-101

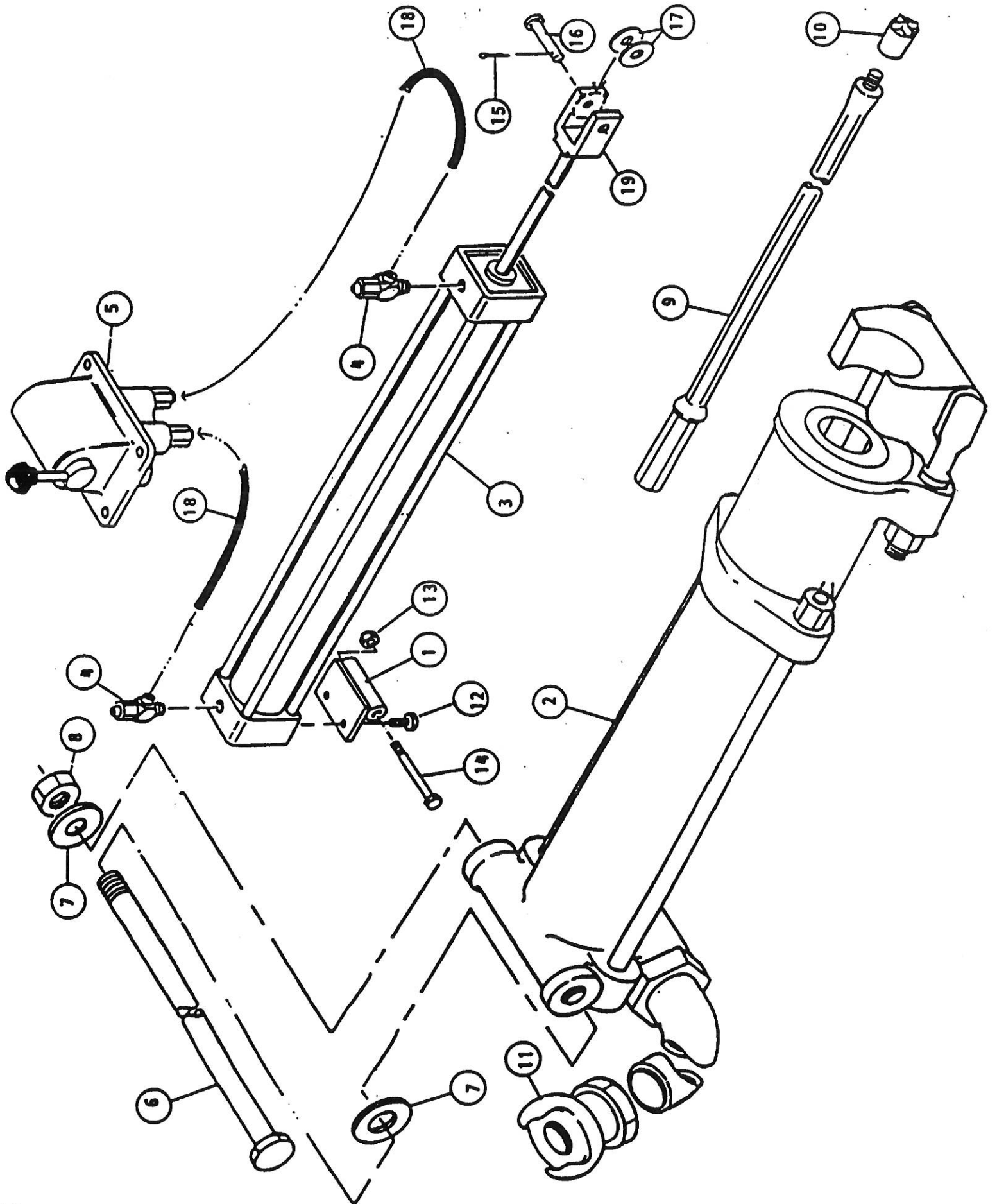
ITEM	QTY	P/N	DESCRIPTION
1	1	115-102	Main Frame Structure
2	1	115-103	Front Alignment Pad
3	1	115-104	Control Panel Shroud
4	2	115-105	Rear Legs
5	1	115-106	Drill Stem Guide (bottom only)
6	1	115-107	Front Lifting Handle
7	1	115-108	Rear Lifting Handle
8	1	115-109	Front Cover Panel
9	1	115-304	Neoprene Stop Pad
10	2	115-305	Adjustable Carriage Lock Bracket Assy.
11	1	510-242	Feed Control Valve
12	1	510-260	Handle Grip
13	1	510-261	Pressure Regulator
14	1	510-262	Regulator Lock Ring
15	1	510-263	Air Pressure Gauge
16	4	510-264	1/4" Hose Fitting
17	1	510-265	1/4" Hose - 8" Long
18	1	510-266	1/4" Hose - 10" Long
19	1	510-267	1/4" Hose - 12" Long
20	1	510-268	1/4" Hose - 29" Long
	1	510-269	Quick Coupler Fitting W/Pipe Threads
	1	510-270	3/4" X 45° Pipe Fitting
	1	510-271	3/4" X 3" Pipe Nipple
	1	510-272	3/4" X 1/4" Reducer
	2	510-276	3/4" X 1-1/2" Pipe Nipple
	1	510-277	Power Control Valve
	1	510-278	3/4" Quick Coupler, Slip Fitting
	2	510-279	Hose Clamp
	4	510-280	5/16" X 1-1/2" Sq Head Hose Clamp Bolt
	1	510-281	3/4" X 30" Hose, 250 PSI W.P. Test
	2	510-282	1/4" X 90° Hose Fitting
	2	510-283	Lock Pin W/Chain
	1	500-064	3/8 NC Lock Nut
	1	510-285	3/4" Hose Fitting
	1	510-286	Drill Stem Bushing (5/8", 3/4" or 7/8" and larger)
	1	510-287	Oiler
	2	500-003	1/4" NC Lock Nut
	1	500-008	1/4" X 3/4" NC Bolt
	3	500-031	5/16" X 3/4" NC Bolt
	5	500-036	5/16" NC Lock Nut
	2	500-042	5/16" X 2" NC Bolt
	2	500-065	3/8" NC Hex Nut
	1	500-070	1/2" X 3-1/2" NC Hex Bolt
	4	500-401	1/2" X 1" Hex Bolt
	2	500-406	1/2" NC Hex Lock Nut
	1	500-434	1/2" X 4" NC Hex Bolt
47	2	500-803	Quick Coupler Safety Pin
48	1	500-408	1/2" Lock Washer
49	1	500-407	1/2" NC Std Nut
50	2	500-073	3/8" X 4" NC Bolt
51	2	500-066	3/8" Lock Washer
52	1	500-001	1/4" X 1-1/2" NC Bolt



10.2 CARRIAGE ASSEMBLY

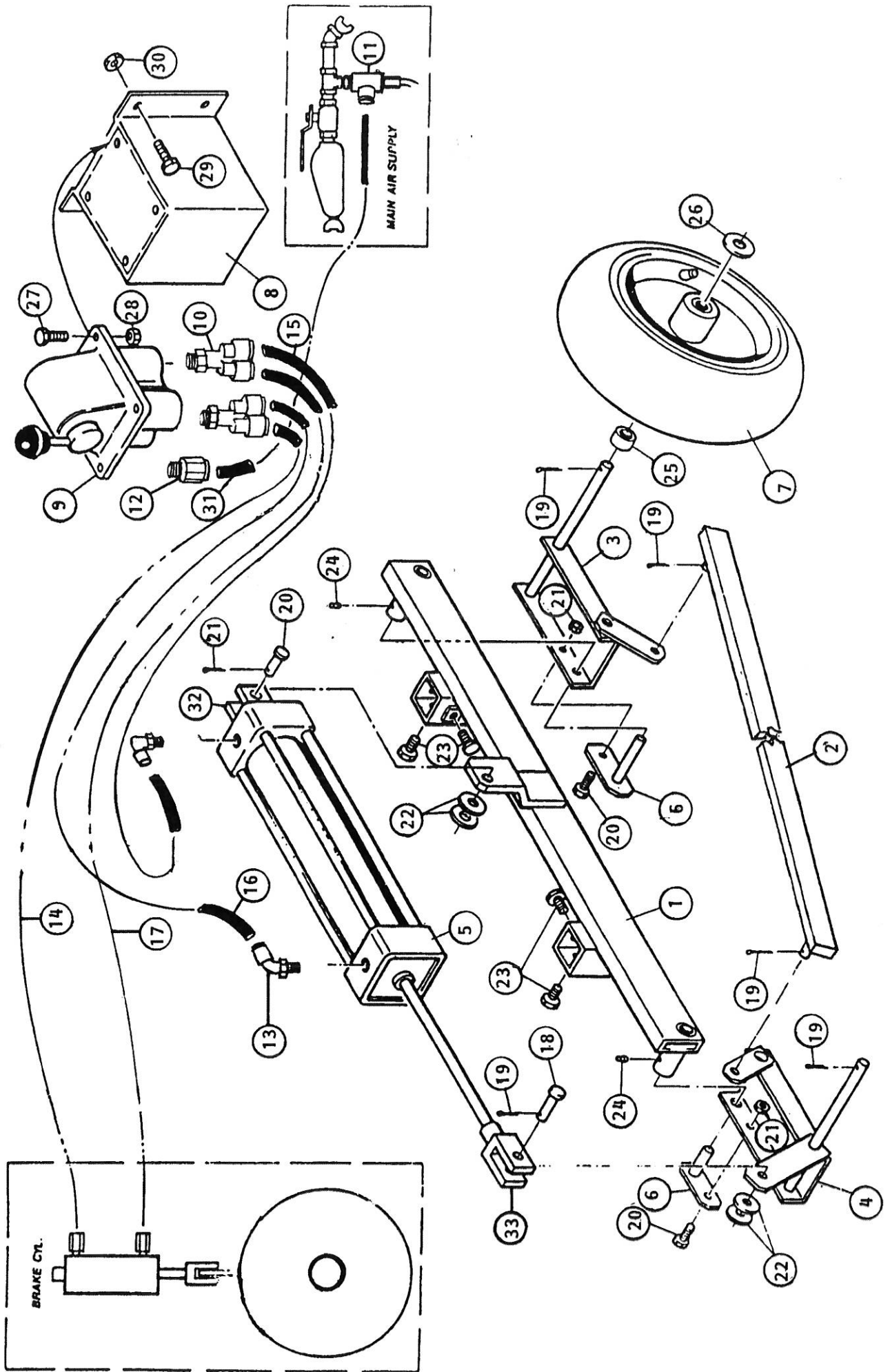
115-200

ITEM	QTY	P/N	DESCRIPTION
1	1	115-202	Main Carriage Frame CP
2	2	115-214	18 Ga. 2-Hole Shim
3	1	115-203	Lifting Bracket
4	1	115-205	Upper Drill Bracket CP
5	4	115-215	22 Ga. Shim (use as required)
6	1	115-207	Lower Drill Bracket CP
7	1	115-111	Air Tube Support Bracket
8	1	115-208	Carriage Tie Strap
9	4	115-209	Roller Bearing Drum
10	4	115-210	Roller Bearing Axle
11	1	115-211	Stop Rod
12	2	115-213	Stop Rod Nut
13	1	115-155	Rear Gun Mount Clamp (not shown - discontinued on new carriage)
14	8	115-212	12 ga Shim (use as required)
15	12	115-156	18 ga Shim (use as required)
16	8	115-157	Bearing Keeper
17	4	500-032	3/8" X 1-1/4" NC Bolt
18	8	500-033	5/16" X 1-1/2" NC Bolt
19	16	500-036	5/16" NC Lock Nut
20	4	500-064	3/8" NC Lock Nut
21	2	500-074	1/2" X 4" NC Bolt
22	2	500-406	1/2" NC Lock Nut
23	2	500-407	1/2" NC Std Nut
24	2	500-408	1/2" Lock Washer
25	1	500-602	1/8" Cotter Pin
26	1	500-606	1/2" X 2-1/2" Clevis Pin



11.3 CARRIAGE CYLINDER / AIR DRILL

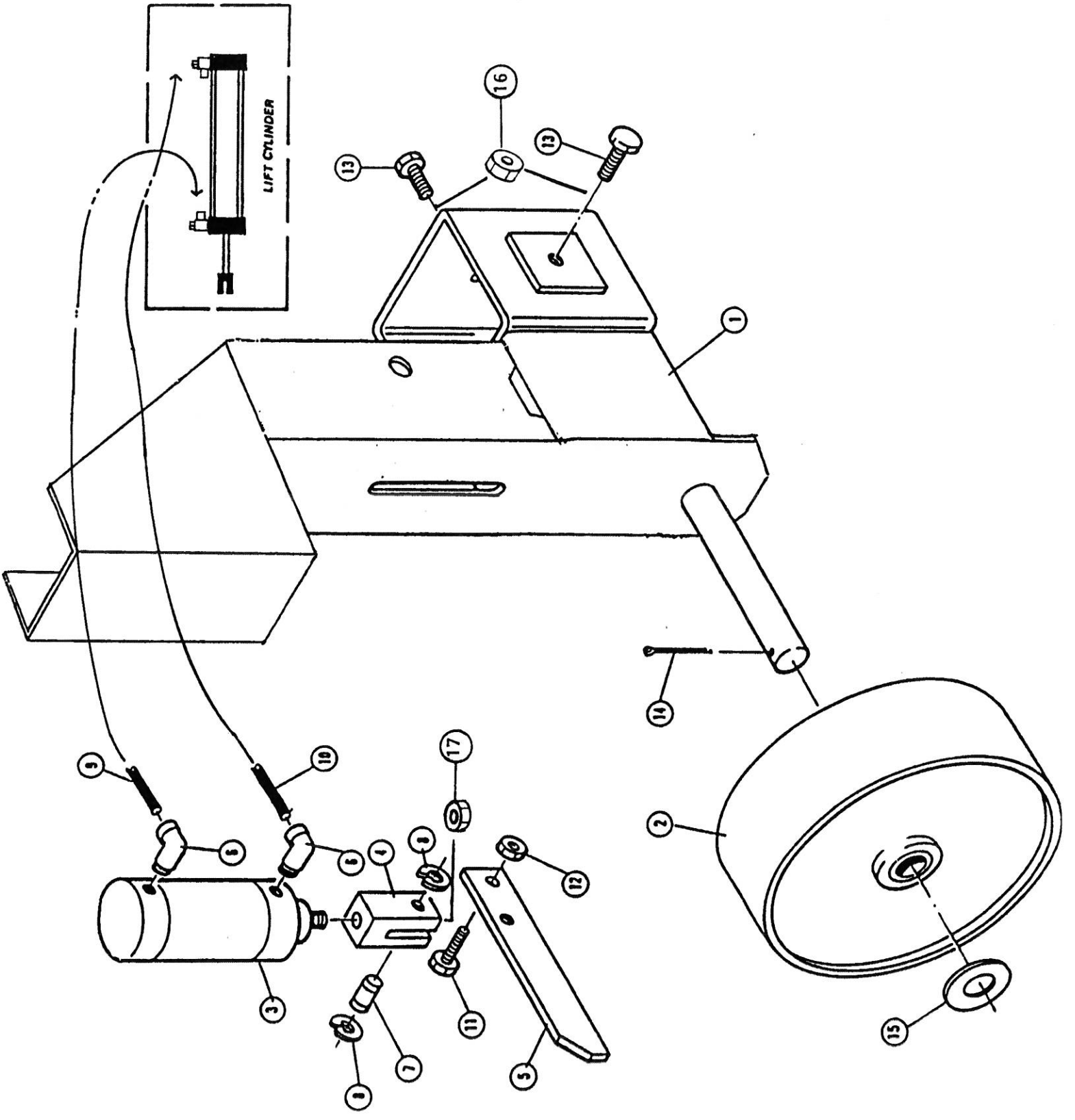
ITEM	P/N	OLD P/N	QTY	DESCRIPTION
1	MFA0624	215-118	1	Feed Cylinder Mounting Brkt
2	0101DRL	510-235	1	CP 32A Rock Drill
3	0514CYL	510-236	1	Feed Cylinder
4	0611VAL	510-290	2	Flow Control Valve
5	0616VAL	510-242	1	Feed Control Valve
6	2590BLT	510-244	1	5/8"x8" Bolt
7	2842WAS	510-246	1	5/8" Washer
8	2742NUT	510-247	1	5/8" Lock Nut
9		510-248	1	Drill Bit - Whirl Type (for 5/8"-1 1/4" diameter)
9		510-249	1	Drill Steel - H Thread (combines with 510-250)
10		510-250	1	Drill Bit - H Thread; Screw on type
11	2009FIT	510-289	1	3/4" Quick Coupler
12	2537BLT	500-075	2	3/8"x3/4" Bolt
13	2734NUT	500-406	1	1/2" Lock Nut
14	2572BLT	500-451	1	1/2"x4 1/2" Bolt
15	3022PIN	500-602	1	Cotter Pin
16	3003PIN	500-606	1	Clevis Pin
17	2830WAS	500-409	2	1/2" Flat Washer
18	1903HOS	510-265	2	1/4" Hose
19	0501CYL	500-201	1	Clevis



10.4 MOBILE SYSTEM

116-101

ITEM	QTY	P/N	DESCRIPTION
1	1	116-101	Support Frame
2	1	116-102	Tie Rod
3	1	116-103	Swivel Assembly (Right)
4	1	116-104	Swivel Assembly (Left)
5	1	510-237	Air Cylinder
6	2	116-105	Swivel Assembly Pin
7	1	510-024	Pneumatic Wheel
8	1	116-106	Valve Control Cover
9	1	510-242	Control Valve
10	2	510-257	1/4" Branch Y Hose Fitting
11	1	510-275	1/4" Male Running Connector
12	7	510-264	1/4" Hose Fitting
13	1	510-258	1/4" X 90° Hose Fitting
14	1	510-292	1/4" Air Hose
15	1	510-241	1/4" Air Hose
16	1	510-268	1/4" Air Hose
17	1	510-291	1/4" Air Hose
18	2	500-606	Pin
19	6	500-602	Cotter Pin
20	2	500-031	5/16" Hex Bolt X 3/4" NC
21	2	500-036	5/16" Lock Nut, NC
22	2	500-409	1/2" Washer
23	2	500-401	1/2" Hex Bolt X 1-1/4" long
24	2	510-294	Grease Fittings
25	1	116-107	5/8" Spacer
26	1	500-418	5/8" Washer
27	1	500-008	1/4" X 3/4" Bolt
28	1	500-003	1/4" Lock Nut, NC
29	1	500-031	5/16" Hex Bolt X 3/4", NC
30	1	500-036	5/16" Lock Nut, NC
31	1	510-293	1/4" Hose
32	1	510-232	Cylinder Rear Bracket
33	1	500-201	Front Clevis

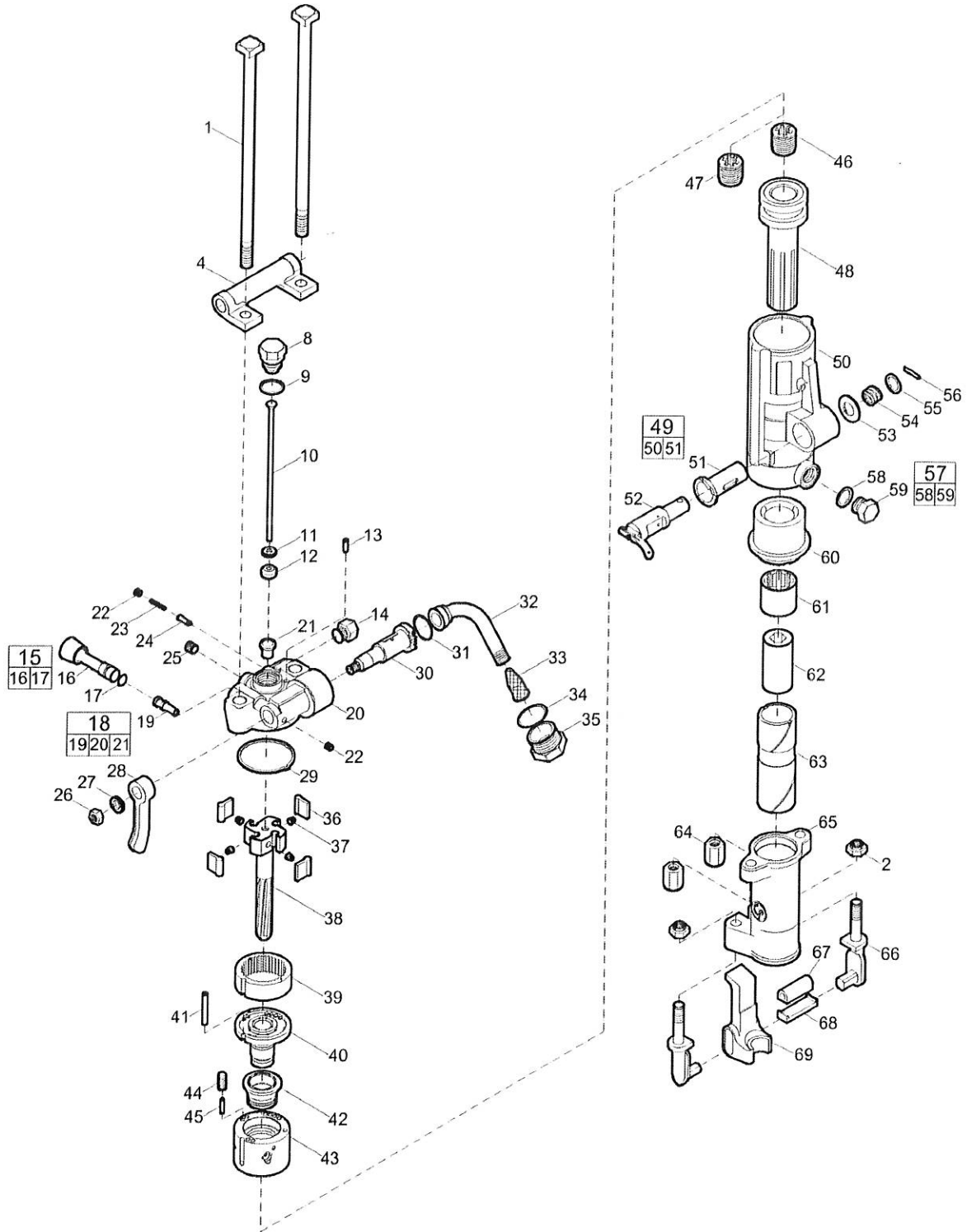


10.5 COMPLETE ASSEMBLY

16-108

ITEM	QTY	P/N	DESCRIPTION
1	1	116-109	Front Wheel Bracket Assembly
2	1	510-048	Wheel
3	1	510-238	Air Cylinder (Front)
4	1	510-295	Clevis
5	1	116-110	Brake Arm
6	2	510-299	90° 1/4" Hose Fitting, 1/8" NPT
7	1	510-296	Clevis Pin
8	2	510-298	Snap Ring
9	1	510-292	1/4" Hose
10	1	510-291	1/4" Hose
11	1	500-010	1/4" X 2-1/2" Bolt
12	1	500-003	1/4" Lock Nut
13	2	500-401	1/2" X 1-1/4" Bolt
14	1	500-602	Cotter Pin
15	1	500-424	3/4" Flat Washer
16	2	500-407	1/2" Stud Nut
17	1	500-425	5/8" Fine Hex Nut

Spare parts list CP 0032 A 7/8" x 3 1/4"



Refer to the Parts Online web page for most up-to-date information. The printed information might be outdated.

Item	Part No.	Name	Qty	L
1	R086623	Bolt - Thru	2	
2	R005742	Nut - Elastic stop	2	A
4	R086608	Bracket - Handle	1	
8	R076793	Plug - Air tube	1	
9	R000537	Gasket - Tube plug	2	
10	R077184	Tube - Air	1	
11	R075449	Washer - Air tube	1	
12	R075099	Rubber - Air tube	1	
13	R075802	Pin - Valve plunger	1	
14	R076372	Plug - Water valve	1	
15	R079130	Water valve port plug, complete	1	
16	-	Water valve port plug	1	
17	C079489	O-ring	1	
18	R087948	Backhead, complete	1	
19	R098054	Bushing - Water valve	1	
20	-	Backhead	1	
21	R137738	Bushing - Blow tube	1	
22	C068064	Plug - Pipe	2	
23	R085671	Spring - Valve plunger	1	
24	R086627	Plunger - Throttle valve	1	
25	C068799	Plug - pipe, Ø 1/4 in., Ø 6.5 mm	1	C
26	P002149	Nut - Hexagon	1	D
27	C036717	Lockwasher - Head latch	1	E
28	R079124	Handle - Throttle valve	1	
29	H0979432	Gasket	1	
30	R086628	Valve - Throttle	1	
31	P103521	O-ring	1	
32	R075265	Swivel - Air inlet	1	
33	R005584	Screen - Air inlet	1	
34	R110317	O-ring	1	
35	R000530	Air swivel nut	1	
36	R075267	Pawl	4	
37	R086654	Spring - Pawl	4	
38	R086622	Bar - Rifle	1	

Refer to the Parts Online web page for most up-to-date information. The printed information might be outdated.

Item	Part No.	Name	Qty	L
39	R076194	Ring - Ratchet	1	
40	R098085	Bushing - Valve guide	1	
41	R075772	Pin - Valve case dowel	1	
42	R076263	Valve	1	
43	R076264	Case - Valve	1	
44	R098084	Plug - Oil regulating	1	
45	R085625	Stem - Oil regulating	1	
46	R075839	Nut - Rifle bar	1	F
47	R075826	Nut - Rifle bar	1	G
48	R000088	Piston	1	
49	R087990	Cylinder, complete	1	
50	--	Cylinder	1	
51	R086611	Bushing - Blower valve	1	
52	R086612	Valve - Blower	1	
53	R075777	Washer - Blower valve	1	
54	R075778	Spring - Blower valve	1	
55	R075780	Washer - Valve spring	1	
56	R076266	Pin - Spring	1	
57	R085611	Oil plug, complete	1	
58	R091176	Gasket - Oil plug	1	
59	--	Oil plug	1	
60	R042161	Bushing - Cylinder	1	
61	R086733	Nut - Chuck rotation	1	
62	R099374	Chuck, 7/8" x 31/4" (22 x 82.5 mm)	1	
63	R041321	Sleeve - Chuck, 7/8" x 31/4" (22 x 82.5 mm)	1	
64	R085756	Nut - Thru bolt	2	
65	R041320	Fronthead, 7/8" x 31/4" (22 x 82.5 mm)	1	
66	R093896	Tunnion - Retainer	2	
67	R093897	Buffer - Retainer	1	
68	R093898	Retainer - Latch shoe	1	
69	R093913	Retainer, 7/8" (22 mm)	1	

Comments for Page: CP 0032 A 7/8" x 3 1/4"

(L)OCAL REMARKS

A | 5/8" - 11

B | 1/8"

C | 1/4"

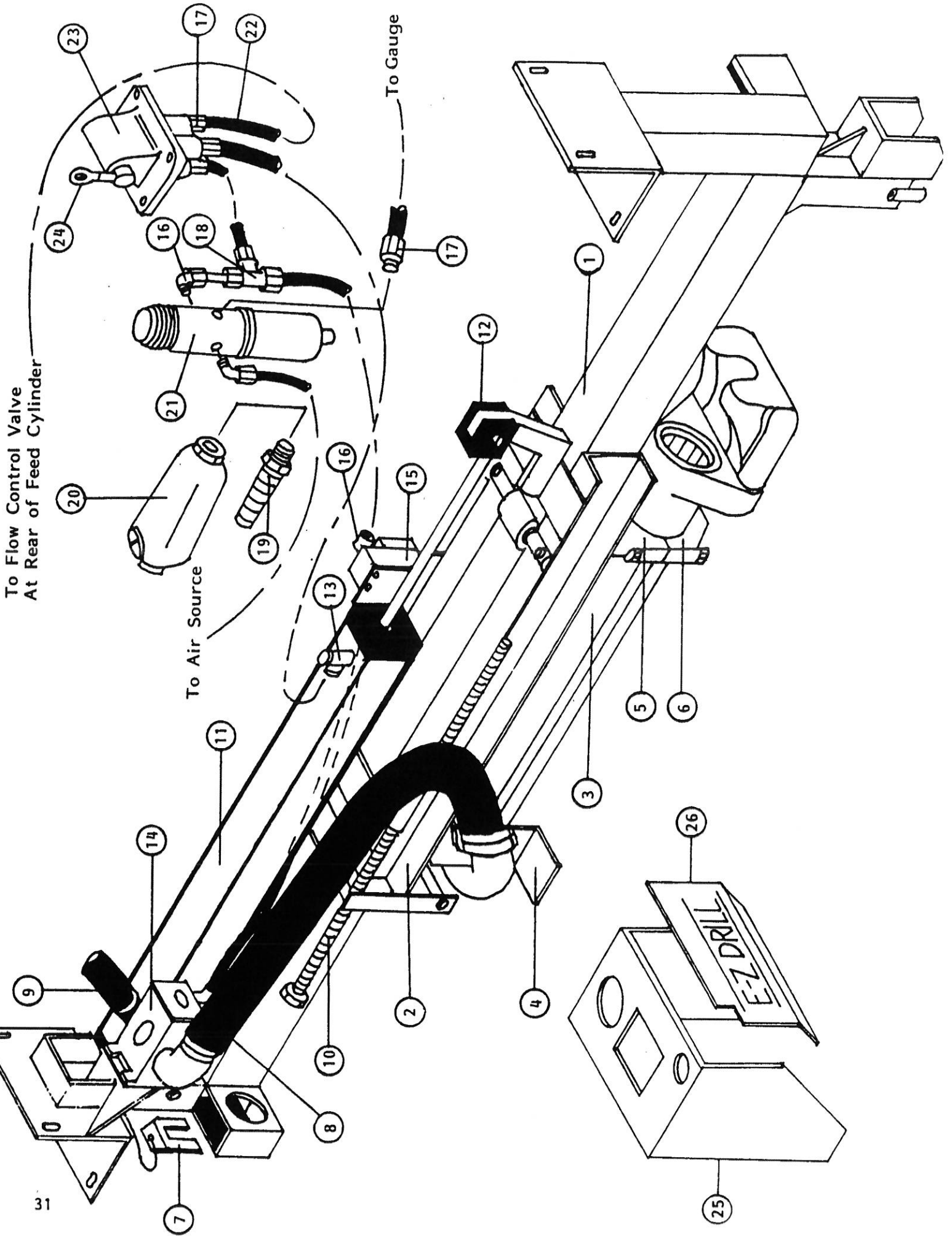
Refer to the Parts Online web page for most up-to-date information. The printed information might be outdated.

11. MULTI-GANG PARTS SECTION

To Flow Control Valve
At Rear of Feed Cylinder

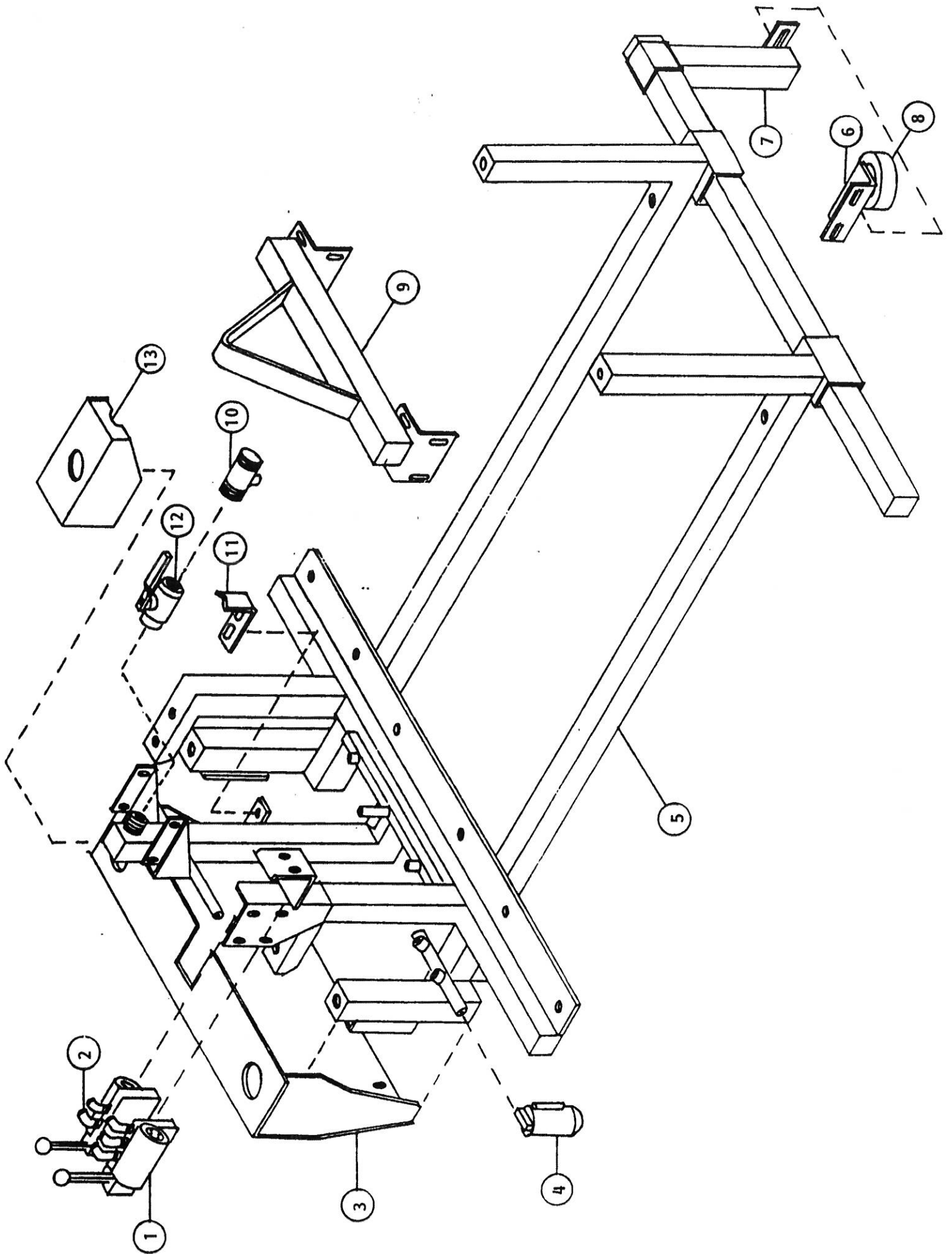
To Air Source

To Gauge



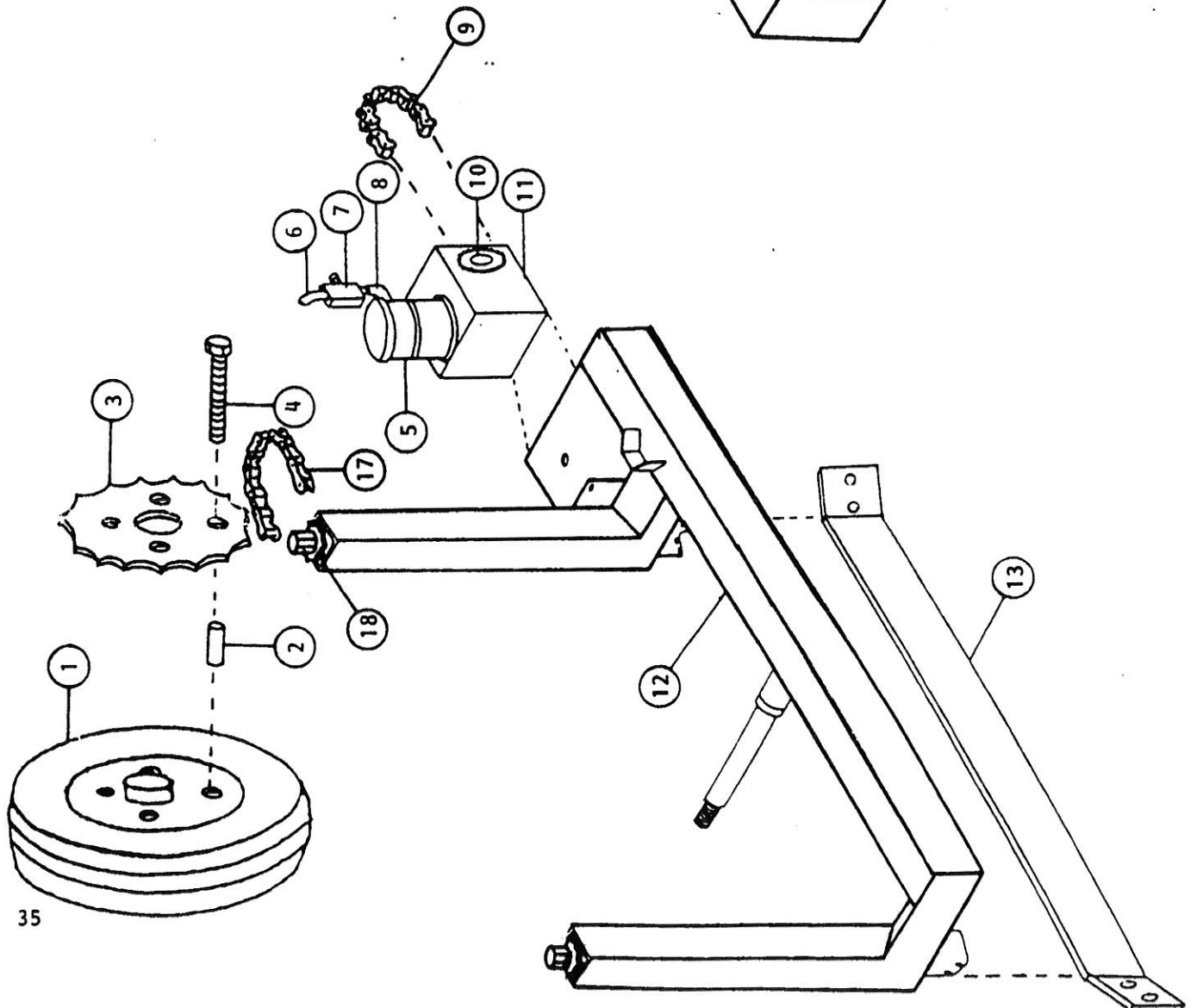
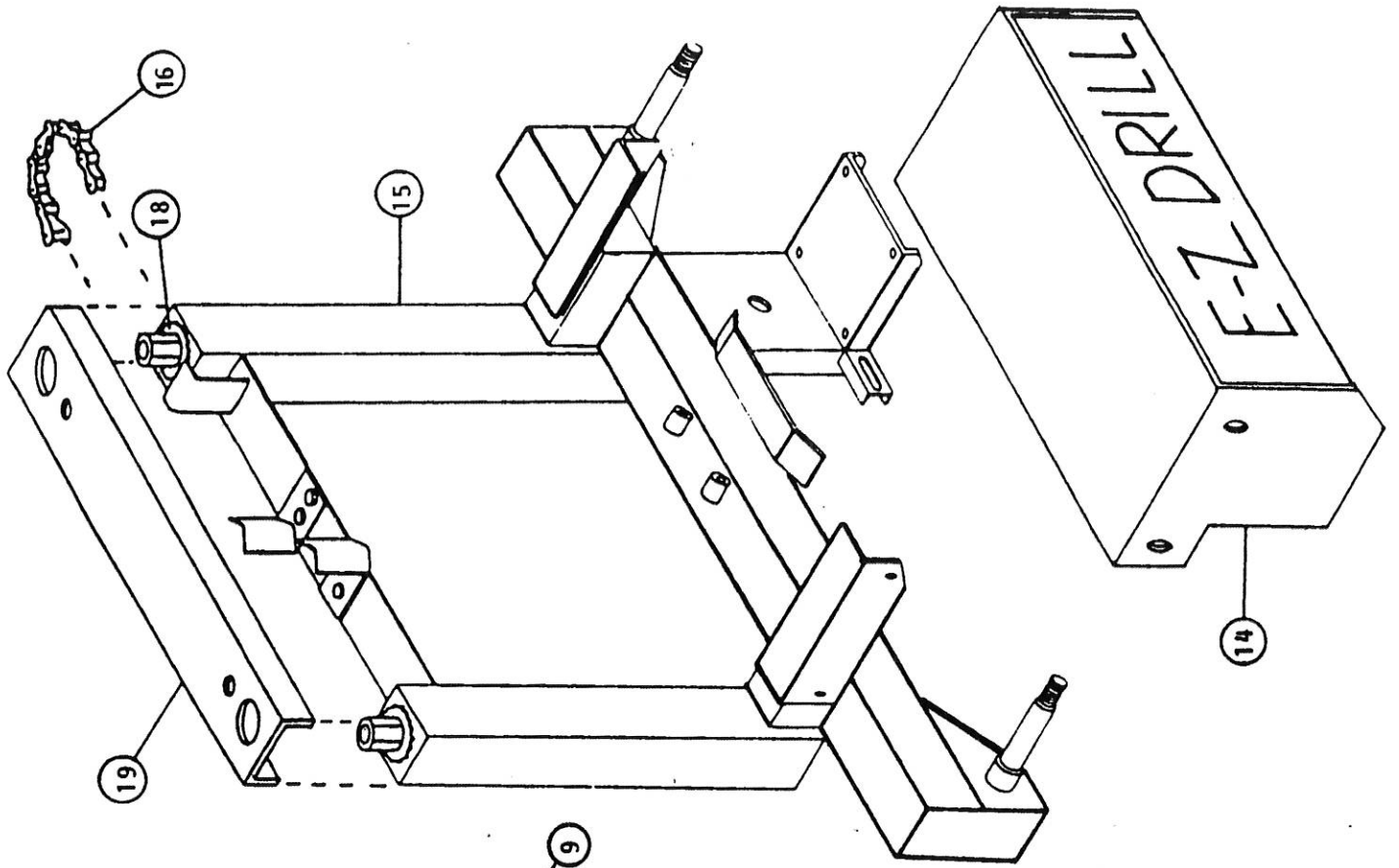
11.1 MULTI-GANG FEED SYSTEM

ITEM	QTY	P/N	DESCRIPTION
1	1	117-201	Carriage Frame Assembly
2	1	117-202	Carriage
3	1	510-235	Air Drill - CP
4	1	115-111	Air Tube Support Bracket
5	1	115-205	Upper Drill Bracket - CP
6	1	115-206	Lower Drill Bracket - CP
7	1	117-203	Carriage Lock
8	1	510-281	3/4" Air Hose
9	1	510-281	3/4" Air Hose
10	2	115-211	Stop Rod
11	1	510-236	Feed Cylinder
12	1	510-233	Clevis
13	2	510-290	Flow Control Valve
14	1	510-300	Pilot Pressure Valve
15	1	510-301	Mechanically Operated Valve
16	5	510-282	1/4" Fitting - 90°
17	4	510-264	1/4" Fitting - Straight
18	1	510-259	1/4" Fitting - Running T
19	1	510-285	3/4" Hose Fitting
20	1	510-287	Oiler
21	1	510-261	Pressure Regulator
22	7	510-292	1/4" Hose
23	1	510-242	Feed Control Valve
24	1	510-302	Self-Aligning Bearing
25	1	600-006	Control Console
26	1	600-005	Control Console Insert Panel
27	1	600-008	Control Console Rear Frame



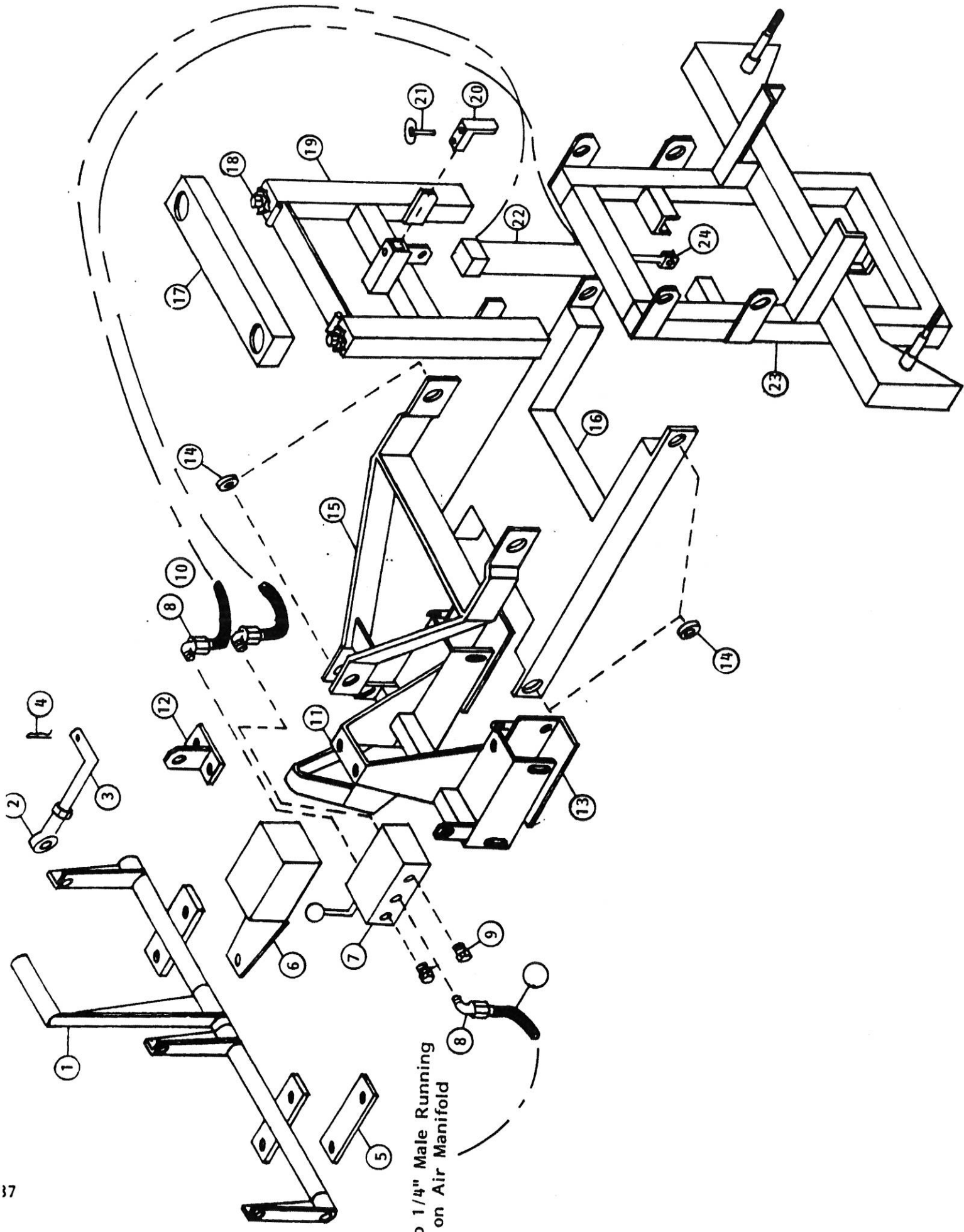
11.2 SELF-PROPELLED FRAME ASSEMBLY

ITEM	QTY	P/N	DESCRIPTION
1	2	510-304	Mobile System Control Valves
2	10	510-305	1/2" Fitting - 90°
3	1	600-009	Rear Shroud
4	1	510-306	In-Line Oiler
5	1	117-300	Frame Assembly
6	2	117-304	Guide Wheel Bracket
7	2	117-204	Guide Wheel Mounting Assembly
8	2	510-307	Guide Wheel
9	1	117-301	Lifting Bracket
10	1	510-308	1-1/2" Control Valve Manifold
11	1	117-312	Chain Tightener (Rear Legs)
12	1	510-303	Main Power Lever
13	1	600-004	Power Lever Shroud



11.3 SELF-PROPELLED MOBILE ASSEMBLY

ITEM	QTY	P/N	DESCRIPTION
1	3	510-321	Wheel Assembly
2	12	117-311	Wheel and Sprocket Spacer
3	3	510-309	Wheel Sprocket
4	12	510-319	1/2" X 4-1/2" Bolt - Fine Thread
5	2	510-320	Air Motor 4 HP
6	1	510-311	1/2" Air Hose
7	4	510-310	1/2" Flow Control Valve
8	12	510-305	1/2" Fitting - 90°
9	1	510-312	Rear Drive Chain
9	1	510-313	Front Drive Chain
10	2	510-317	Gear Box Sprocket
11	2	510-318	Gear Reduction Box
12	1	117-310	Rear Wheel Frame Assembly
13	1	117-305	Foot Guard
14	1	600-010	Front Motor Shroud & Panel
15	1	117-307	Front Wheel Frame
16	1	510-314	Front Adjusting Chain
17	1	510-315	Rear Adjusting Chain
18	4	510-316	Screw Jack Assembly
19	1	600-011	Front Chain Cover



To 1/4" Male Running
T on Air Manifold

11.4 "LIFT AND TRAVEL" ASSEMBLY

ITEM	QTY	P/N	DESCRIPTION
1	1	117-411	Feed Lever Handle Assembly
2	3	510-302	Self-Aligning Bearing
3	3	117-398	Feed Lever Extension
4	3	500-803	Safety Pin
5	1	117-410	Shim - Handle Assembly
6	1	117-405	L&T Valve Cover
7	1	510-400	L&T Valve
8	3	510-258	Fitting, Hose 1/4" X 90°
9	3	510-332	Breather Vent 1/4"
10	1	510-338	Air Hose - 1/4"
11	1	117-400	Bracket, L&T Support Lifting
12	1	117-409	Clevis, Lifting Bracket
13	2	117-399	Frame Clamps - 6"
14	8	510-118	Bearings - 5/8"
15	1	117-401	"A" Frame
16	1	117-402	"H" Frame
17	1	600-011	Front Chain Cover
18	2	510-316	Screw Jack Assembly
19	1	117-404	L&T Front Leg Assembly
20	1	117-408	Front Axle Lock
21	1	510-283	Lock Pin
22	1	510-402	Air Cylinder
23	1	117-403	L&T Front Axle Frame
24	1	..	Clevis